





## PORTABLE POWER Index:

<b>Lithium Chargers/Starters</b> .....	1034-1036
<b>Portable Power</b> .....	1036-1040
<b>Chargers:</b> .....	1040-1048
Bench Chargers .....	1040-1042
Portable Chargers .....	1043
Solar Power Chargers .....	1043
Wheeled Chargers .....	1043-1047
Bank Chargers .....	1048
<b>Start Alls</b> .....	1048-1049
<b>Testers:</b> .....	
Analyzers .....	1049-1055
Load Testers .....	1056
<b>Inverters</b> .....	1057
<b>Power Supplies</b> .....	1058
<b>Booster Cables</b> .....	1058-1059
<b>Battery Tools/Testers/Brushes/Lifters</b> .....	1060
<b>Power Banks</b> .....	1061

# Battery Service Equipment

## LITHIUM CHARGERS/STARTERS



**KTI74391**

### **Jump Starter/Power Supply 12,000 mAh**

- 250 amps cranking power and 500 peak amps
- Intelligent cables feature built-in short-out protection
- Digital read out for more precise functionality
- Able to jump start cars, SUVs, Light and Medium duty trucks
- 2 USB charging ports, in addition to 19V, 16V, and 12V outputs
- Covered by a 1 year warranty

**WARNING:** Cancer and Reproductive Harm - [www.P65Warnings.ca.gov](http://www.P65Warnings.ca.gov)



**KTI74392**

### **Jump Starter/Power Supply 15,500 mAh**

- 400 cold-cranking amps and 800 peak amps
- 19V, 16V, & 12V outputs
- Intelligent cables feature built-in short-out protection
- Jump start a wide range of both gas and diesel vehicles
- 2 USB charging ports, and LCD digital read out for more precise functionality
- Covered by a 1-year warranty

**WARNING:** Cancer and Reproductive Harm - [www.P65Warnings.ca.gov](http://www.P65Warnings.ca.gov)



**KTI74393**

### **Jump Starter/ Power Supply 18,000 mAh**

- 500 amps cranking power and 1000 peak amps
- Intelligent cables feature built-in overcharge and reverse polarity protection
- Able to jump start a wide range of gas-powered vehicles and diesel vehicles up to 7.3L
- 2 USB charging ports in addition to 19V, 16V, & 12V outputs, and an OBDII memory saver cable
- Includes 8 computer recharging tips and 3-in-1 pigtail phone charging cord
- Covered by a 1 year warranty

**WARNING:** Cancer and Reproductive Harm - [www.P65Warnings.ca.gov](http://www.P65Warnings.ca.gov)



**KTI74394**

### **Industrial Power Bank & Jump Starter Kit 30,000 mAh**

- 800 amps cranking power/1800 peak amps
- Intelligent cables feature built-in overcharge and reverse polarity protection
- Jump starts the widest variety of vehicles, including heavy-duty trucks, buses, tractors, and more
- Includes 8 computer recharging tips and a 3-in-1 pigtail phone charging cord
- 2 USB charging ports, as well as 19V, 16V, & 12V outputs and an OBDII memory saver cable
- 1-year warranty

**WARNING:** Cancer and Reproductive Harm - [www.P65Warnings.ca.gov](http://www.P65Warnings.ca.gov)



### **SCUSL1317 1000 Peak Amp Lithium Ion Jump Starter**

- Works with vehicles up to 10 cylinders
- Great for emergencies and charging portable electronics
- 2.4A USB port - Fast charging for all USB devices, including smartphones, mp3 players and tablets
- Qualcomm® Quick Charge™ 3.0 Technology port
- 1 yr warranty on material and workmanship



### **SOLJNC318 12V Lithium Jump Starter, 700 Peak Amps**

- 700 Peak Amps / 330 Start Assist Amps
- 12V10A output to power accessories
- 2 USB outlets for use with small electronics



### **SOLJNC311 12V Lithium Jump Starter, 500 Peak Amps**

- 500 Peak Amps / 250 Start Assist Amps
- 12V10A output to power accessories
- USB outlet for use with small electronics
- Full size clamps for secure connections
- Numerous Safety features, including reverse polarity protection
- High intensity flashlight
- Digital display
- Includes wall charger, Repair Coupon and zipper case

# Battery Service Equipment

## LITHIUM CHARGERS/STARTERS

# NOCO®

### NOCCB20

#### NOCO Genius Boost Sport 400A 12V Lithium Jump Starter

- Rated at 400 Amps (4,650 Joules3S)
  - up to 20 jump starts on a single charge
- Ultra-bright 100 lumen LED flashlight with 7 light modes, including SOS and Emergency Strobe
- Gas engines up to 4 Liters (not recommended on diesel apps)
- Includes needle-nose battery clamps, USB charging cable, microfiber storage bag
- 1-year hassle-free limited warranty

**WARNING:** Cancer and Reproductive Harm - [www.P65Warnings.ca.gov](http://www.P65Warnings.ca.gov)



### NOCCBC013 Boost Sport-Plus EVA Protection Case

- Designed and made exclusively to fit Boost UltraSafe® jump starters
- Does NOT include contents shown

### NOCCB40

#### NOCO Genius Boost Plus 1000A 12V Lithium Jump Starter

- Rated at 1,000 Amps (7,000 Joules3S)
  - up to 20 jump starts on a single charge
- Ultra-bright 100 lumen LED flashlight with 7 light modes, including SOS and Emergency Strobe
- Gas engines up to 6 Liters and diesel engines up to 3 Liters
- Includes HD battery clamps, USB charging cable, USB car charger, microfiber storage bag
- 1-year hassle-free limited warranty

**WARNING:** Cancer and Reproductive Harm - [www.P65Warnings.ca.gov](http://www.P65Warnings.ca.gov)



### NOCCB50

#### NOCO Boost XL 12V 1500 Amp Lithium-Ion Jump Starter

- A lithium battery jump starter rated at 1,500 Amps.
- Spark-proof connections and reverse polarity protection.
- Recharges USB devices, like smartphones, tablets, and more.
- Jump starts gas engines up to 7 liters, and diesel up to 4.5 liters.
- Provides up to 30 jump starts on a single charge.
- 1 yr warranty on material and workmanship

**WARNING:** Cancer and Reproductive Harm - [www.P65Warnings.ca.gov](http://www.P65Warnings.ca.gov)



### NOCCBC017 Boost XL EVA Protection Case

- Offers protection from moisture, impact, dust, and environmental factors.
- Fits the NOCO Genius GB50 Boost UltraSafe Jump Starters (not included).

# NOCO®

### NOCCB70

#### NOCO Genius Boost HD 2000A 12V Lithium Jump Starter

- Rated at 2,000 Amps (15,700 Joules3S) with spark-proof technology and reverse polarity protection
  - up to 40 jump starts on a single charge
- Ultra-bright 400 lumen LED flashlight
- Designed for gas engines up to 8 Liters and diesel engines up to 6 Liters
- Includes HD battery clamps, USB charging cable, XGC male plug, XGC female plug, XGC cable, microfiber storage bag
- 1-year hassle-free limited warranty

**WARNING:** Cancer and Reproductive Harm - [www.P65Warnings.ca.gov](http://www.P65Warnings.ca.gov)



### NOCCBC014

#### Boost HD EVA Protection Case

- Designed and made exclusively to fit NOCO GB70 Boost

### NOCCB150

#### NOCO Genius Boost Pro 4000A 12V Lithium Jump Starter

- Rated at 4,000 Amps (22,500 Joules3S) with spark-proof technology and reverse polarity protection
  - up to 80 jump starts on a single charge
- Ultra-bright 500 lumen LED flashlight with 7 light modes, including SOS and Emergency Strobe
- Designed for both gas and diesel engines up to 10+ Liters
- Includes the GB150, HD battery clamps, USB charging cable, XGC male plug, XGC female plug, XGC cable, microfiber storage bag
- 1-year hassle-free limited warranty

**WARNING:** Cancer and Reproductive Harm - [www.P65Warnings.ca.gov](http://www.P65Warnings.ca.gov)



### NOCCBC015

#### Boost Pro EVA Protection Case



### NOCCB500

#### Max 20000A Lithium Jump Starter

- Switchable 12V and 24V modes, designed for high-displacement engines, covering most applications
- Protects against reverse polarity, sparks, over-charging, over-current, open-circuits and over-heating
- Built-in voltmeter displays the voltage of the vehicle's battery for enhanced diagnostics and troubleshooting
- 2200 lumen ultra-bright LED work light for extreme visibility
- 7 light modes, including SOS and emergency strobe
- 8X Lighter, 16X Smaller, and 30% More Powerful than the lead acid equivalent

**WARNING:** Cancer and Reproductive Harm - [www.P65Warnings.ca.gov](http://www.P65Warnings.ca.gov)

# Battery Service Equipment

## LITHIUM CHARGERS/ STARTERS

# NOCO



### NOCXGC4

#### Power Adapter 56W XGC

- Compatible with GB70, GB150 & GB500
- Recharge BOOST 5X faster
- 56 Watts 14V/4A • 120-240VAC IN
- Comes with 4 Plug Types-A, C, G, I

**WARNING:** Cancer and Reproductive Harm - www.P65Warnings.ca.gov

# ALLSTAR



### ALS590

#### Boost Ultra

- 800 cranking amp/1800 peak amps
- 12V vehicle jump-start, back up charger for all brands of cellphones, notebooks, tablets and other portable electronics
- Powerful, high capacity Nano Lithium battery
- Includes Smart-Clamps for jump starting with built-in safety and diagnostic features

**WARNING:** Cancer and Reproductive Harm - www.P65Warnings.ca.gov

## PORTABLE POWER

# ASSOCIATED



### ASOKS401

#### Heavy Duty Jump Starter with 7' DC Leads

- Replaceable cables allows field service
- Sealed AGM battery
- Digital LED display shows state of current charge

**WARNING:** Cancer and Reproductive Harm - www.P65Warnings.ca.gov

## PORTABLE POWER

# Schumacher

# DSR

# FREIGHT DELIVERY



### SCUDSR104

#### DSR Pro Booster, 12/24V Mobile, 1050/850CA

- 12V 1050 cranking amps, 780 cold amps, 10000 peak amps
- 24 Volt 850 cranking amps, 530 cold amps, 5000 peak amps
- 120 V ac 12v-8a charger
- Includes auxiliary connector for other specific cables ie. Nato plug and cat

Durable RotoMold Casing which is the strongest in the industry along with wheels for portability. Extra long high strand double insulation cable with heavy duty clamps. Reverse polarity alarm and an auxiliary connection for alternate cables.

**WARNING:** Cancer and Reproductive Harm - www.P65Warnings.ca.gov

### SCUDSR103AUX

#### Jump Starter, ProSeries Single Battery

- 12V 900 cranking amps, 690 cold amps, 6400 peak amps
- 24V 650 cranking amps, 420 cold amps, 3200 peak amps
- 120 Volt ac 12v-8a charger
- Optional DC charging station



### SCUDSR114

#### Jump Starter ProSeries Single Battery

- High-output AGM battery - for 12V systems
- 4 AWG, 60" cables
- 2A automatic external charger
- Smart Eco Energy - meets the highest industry standards for energy efficiency

**WARNING:** Cancer and Reproductive Harm - www.P65Warnings.ca.gov



### SCUDSR114MSC

#### Pro Series Jump Starter with Memory Saver

- 2200 peak amps
- 330 cranking amps
- 275 cold cranking amps
- High output AGM battery
- **FREE OBD-L MEMORY SAVER INCLUDED**
- 1 yr warranty on material and workmanship

**WARNING:** Cancer and Reproductive Harm - www.P65Warnings.ca.gov



# Battery Service Equipment

## PORTABLE POWER



### SCUDSR115 Jump Starter, ProSeries Single Battery

- Cranking Amps
- 2 AWG, 60" cables
- (2) High-output AGM battery for 12V / 24V systems
- 44000 Peak Amps / 500 Cranking Amps / 415 Cold
- 2A automatic external charger
- Smart Eco Energy – meets the highest industry standards for energy efficiency

**WARNING:** Cancer and Reproductive Harm - [www.P65Warnings.ca.gov](http://www.P65Warnings.ca.gov)



### SCUDSR116 Jump Starter, Single Battery with Power Inverter

- 525 Cranking Amps
- 350 Cold Cranking Amps
- High Output AGM Battery
- 12 Volt Systems
- Power Inverter & USB Port

**WARNING:** Cancer and Reproductive Harm - [www.P65Warnings.ca.gov](http://www.P65Warnings.ca.gov)



### SCUDSR119 Jump Starter, Professional

- 280 Cranking Amps
- 225 Cold Cranking Amps
- 18 Ah professional grade battery
- 4 Gauge, 28 inch cables
- LED Charging Indicators

**WARNING:** Cancer and Reproductive Harm - [www.P65Warnings.ca.gov](http://www.P65Warnings.ca.gov)



### SCUDSR128 Lithium PRO Jump Starter

- Easy-to-read, animated display gives you step-by-step instructions to properly jump start your battery
- Dual 2.1A USB ports; 650 cranking amp
- Professional grade, high-output, Lithium Ion battery specially formulated to jump start vehicles.
- Rust & corrosion-proof case with protective side caps
- Professional clamps with ergonomic grips



**EXCLUSIVE**



### Jump-N-Carry 1700 Peak Amp 12 Volt Jump Starters

- 425 Cranking Amps
- Clore PROFORMER Battery Technology
- 46" #2 AWG welding cable leads
- Industrial-grade clamps
- 12VDC outlet
- Built-in charger
- Automatic charging
- Voltmeter provides charge status of onboard battery
- 1 year limited warranty
- Includes Repair Service Coupon

**SOLJNC660G - Hi-Viz Green**

**SOLJNC660 - Blue**

**EXCLUSIVE**



### 1700 Peak Amp Premium 12 Volt Jump Starters

- 1700 Peak Amps, 425 Cranking Amps
- Clore PROFORMER battery technology
- 68" #2 AWG welding cable leads
- PowerJaw™ clamps
- Master ON/OFF switch
- Built-in 3A automatic charger
- Now in Hi-Viz Green
- Includes Repair Service Coupon

**SOLJNC770G - Hi-Viz Green**

**SOLJNC770R - Red**

- Includes cover

### SOLJNC300XL Jump-N-Carry Ultra-Portable Jump Starter with Flashlight - 900 Peak Amps

- Ultra-portable jump starter can be stored virtually anywhere and weighs just 9 lbs.
- Includes Repair Service Coupon
- 27" #4 gauge cables provides efficient power transfer to vehicle's battery
- 12 Volt outlet
- 1 year limited warranty



# Battery Service Equipment

## PORTABLE POWER

**JUMP  
n Carry**

### SOLJNC4000

#### Jump-N-Carry 1100 Peak Amp 12 Volt Jump Starter

- 325 Cranking Amps
- Clore PROFORMER Battery Technology
- 23" #2 AWG welding cable leads
- Industrial-grade clamps
- Built-in charger
- Voltmeter provides charge status of on-board battery
- Includes Repair Service Coupon
- 12VDC outlet • 1 year limited warranty



### SOLJNCAIR

#### Jump-N-Carry 1700 Peak Amp 12 Volt Jump Starter with Integrated Air Delivery System

- 425 Cranking Amps
- Clore PROFORMER battery technology
- 12' coiled air hose with screw-on chuck
- Voltmeter provides charge status of onboard battery
- 12VDC outlet
- 1 year limited warranty



### SOLJNC950

#### Jump-N-Carry 2000 Peak Amp 12 Volt Jump Starter

- 700 Cranking Amps
- Clore PROFORMER Battery Technology
- 46" #2 AWG welding cable leads
- Built-in automatic charger
- Voltmeter provides charge status of onboard battery
- 12VDC outlet to power accessories
- 1 year limited warranty



### SOLJNC1224

#### Jump-N-Carry 3400 Peak Amp 12/24 Volt Jump Starter

- 850 Cranking Amps - 12V
- 1700 Peak Amps and 425 Cranking Amps - 24V
- Clore PROFORMER Battery Technology
- 46" #2 AWG welding cable leads
- Voltmeter provides charge status of onboard battery
- 12VDC outlet to power accessories • 1 year limited warranty



**BOOSTER  
PAC**  
BRAND

### SOLE52500KE

#### Booster Pac 1100 Peak Amp 12 Volt Jump Starter

- 300 Cranking Amps
- LED battery status indicator
- Automatic recharging • 19" Heavy-duty cables
- DC outlet to power 12 Volt accessories
- 1 year limited warranty



### SOLE55000

#### Booster Pac 1500 Peak Amp 12 Volt Jump Starter

- 400 Cranking Amps
- ES Series battery designed specifically for vehicle jump starting
- Automatic recharging
- LED battery status indicator
- 43" #4 AWG cables
- Industrial Grade Hot Jaw™ clamps • DC outlet
- 1 year limited warranty



### SOLESA218

#### 110V Charger with Small Jack

## PRO-LOGIX



### SOLPL2545

#### 12V Intelligent Battery Charger with Start Assistance

- Charge and maintain 12 volt batteries
- 20/10/2 Amp Charge Rates
- 20A fast charge rate is ideal for charging large batteries
- Advanced multi-phase charging process
- 12 Volt engine starting assistance
- 1 yr warranty on material and workmanship

### SOLPL4020

#### 12V 2A 4-Bank Solar Pro-Logix Battery Charger

- Four independent output channels, charge up to four batteries at once
- Designed to properly charge a standard flooded or AGM battery (including Spiral Wound)
- Fully automatic operation
- Advanced multi-phase charging process
- Enhanced maintenance mode for ideal long term storage
- 1 yr warranty on material and workmanship



# Battery Service Equipment

## PORTABLE POWER



### SOLES6000KE

#### Portable Battery Booster Pac - 800 Cranking Amps

- 3000 peak amps
- 54" cables and industrial grade heavy-duty clamps
- Automatic charging
- DC outlet to power a variety of 12 volt accessories



### SOLESA217

#### Charger with Small Jack for SOLES5000 and SOLES6000



### SOLES1224

#### Truck Pac 3000 Peak Amp 12/24 Volt Jump Starter

- 1500 Peak Amps / 370 Cranking Amps in 24V mode
- ES Series battery designed specifically for vehicle jump starting
- Integrated voltage selection switch
- LED battery status indicator
- 60" #2 AWG cables
- Industrial Grade Hot Jaw™ clamps
- AWS Advanced Warning System™
- DC outlet to power 12 Volt accessories
- 1 year limited warranty



### SOLES8000K

#### 1500 Peak Amp 24 Volt Truck Pac Jump Starter

- ES Series batteries are specifically designed for jump starting
- Long 54" cables for extra reach on large vehicles and implements
- Industrial grade hot jaw clamps penetrate corrosion on battery terminals
- 1 year limited warranty



### SOL2001

#### 12 Volt Commercial Charger/Starter

- Automatic 10 Amp battery charger
- Jump starting based on battery installed
- 5' retractable jumper cable leads
- Requires Group 31 battery (not included)
- 1 Year limited warranty



### SOL3001

#### 12 Volt Commercial Charger/ Starter with Air Compressor

- This 3-in-1 unit provides vehicle jump starting, battery charging and delivery of air
- Jump starting power is determined by user-installed battery – recommended battery size is 1000CCA
- Requires Group 31 battery (not included)
- 10 amp auto charger keeps onboard battery charged and can also be used to charge vehicle batteries
- 5' #2 gauge cable with industrial grade clamps. All cables (including power cord and air hose) are retractable for easy management
- 1 year limited warranty



### SOLHT1224

#### Heavy Truck 12/24 Volt Commercial Charger/Starter

- 2x7A Automatic charging system
- 1400 Cold Cranking Amps in 12 Volt mode
- 800 Cold Cranking Amps in 24 Volt mode
- 10' jumper cable leads
- Features AGM batteries for spill-free operation



# Battery Service Equipment

## PORTABLE POWER



### GDJP-12-4000

#### Goodall Start-All 12 Volt Jump Starter Pack, 4000 Amp

- Built to last, this unit starts the toughest semi-truck batteries on demand. The Jump-Pack is equipped with proprietary "Hyperboost" technology, which provides an instantaneous energy transfer to the battery the moment the cables are properly connected, which maximizes jump-starter performance
- It's also a personal power-bank that charges, smart phones and other mobile electronics
- Jump-starts engines up to 16L diesel
- Capacity: 236.8 Watt-hours (236,8000mWh)
- Peak Cranking Amps: 4000 Amps (.2 secs)
- Lifetime Performance: Up to 5000 Starts



### GDJP-24-3000

#### Goodall Start All Jump Pack Pro 16L 24V Engine Systems

- 24V 3000 Amps Peak Performance
- Internal Safety Circuitry works with jumper cables for maximum safety and protection
- Rapidly recharge smart phone, tablets, cameras, and more using the included 3-in-1 mobile charging cables.
- Protect-All Safety Features
- Carrying case, AC wall adapter and 12V auto charger for recharging the unit, 8-in-1 laptop adapters, 3-in-1 electronics adapter, safety strap and clip.
- 1 yr warranty from date of shipment from vendor

## CHARGERS

### Bench Chargers



### SCUSC1355

#### Schumacher Electric 1.5 Amp Charger/Maintainer

- For maintaining all powersport, car and boat batteries
- Microprocessor controlled - automatically adjusts the amperage rate to charge and maintain
- Multi-stage charging for added precision, safety and battery life
- Auto voltage detection - 6 or 12 volt
- Float mode monitoring - Automatically maintains optimum battery charge
- 2 yr warranty on material and workmanship w/ POP



### SCUDSR117

#### Battery Charger Maintainer, 3 Amp, 6/12V

- Microprocessor Controlled
- LED Indicators - Show charging status
- 13.6V Service mode - maintains a stable voltage
- Reverse Hook-up Protection
- Schu Eco Energy - Meets the highest industry standards

**WARNING:** Cancer and Reproductive Harm - [www.P65Warnings.ca.gov](http://www.P65Warnings.ca.gov)



### SCUDSR118

#### Battery Charger/Maintainer 3 Amp, 6/12V

- Fully automatic
- Built-in cord management
- LED indicators & touch pad controls
- Scrolling digital display • Auto voltage detection

**WARNING:** Cancer and Reproductive Harm - [www.P65Warnings.ca.gov](http://www.P65Warnings.ca.gov)



# Battery Service Equipment

## CHARGERS

### Bench Chargers



#### OTC3176 Smart Battery Charger & Maintainer

- Patented 5-stage automatic 5 amp charging system
- Quickly and efficiently charges a 12V battery
- Switching technology helps restore slightly sulfated batteries



#### BTT021-0128 Battery Tender® Plus Advanced Battery Charging System 12V

- Fully automatic maintenance-free charging
- 1.25 amp
- Temperature compensation
- Sparkproof and reverse polarity protected
- Includes a quick connect harness for hard to reach areas
- 10 year warranty



#### BTT021-0123 Battery Tender® Jr. Automatic Battery Charger - 12V

- Maintenance-free charging; fully automatic
- Microprocessor controlled "Smart Charge" technology
- Perfect for all lead acid, flooded or sealed maintenance free batteries • 5 year warranty



#### BCSBM3B Battery Maintainer/Charger

- Fully Automatic high frequency charging
- Reverse polarity protection
- 3 Ways to connect: batter clips, 12V DC accessory plug & battery ring terminals
- Built in mounting brackets
- Charges 6V and 12V AGM, GEL and WET batteries



#### NOCC4 4.4A 4-Bank Smart Battery Charger

- A 6V and 12V 4-bank battery charger and maintainer
- Charges lead-acid and lithium-ion batteries up to 40 amp-hours
- Recovers deeply discharged batteries down to as little as 2 volts
- Spark-proof technology and reverse polarity protection
- Built-in battery desulfator to recover worn-out batteries
- 5 yr warranty on material and workmanship



#### SOL1002 1.5 Amp 12 Volt Automatic On-Board Charger

- Automatic operation
- Onboard charging
- Battery attachment kit included
- Weather resistant plastic case
- 1 year limited warranty



#### SOLPL2320G 20A 6/12V PRO-LOGIX Battery Charger

- 6 and 12 Volt battery charging
- 20/10/2A charge rates
- 20A fast charge rate is ideal for charging large batteries
- Advanced multi-phase charging process
- Enhanced maintenance mode for ideal long term storage
- 0-20A power supply mode for diagnostics and on-vehicle repairs



Intelligent, beneficial, safe and versatile – one charger does it all, from fast charging and battery repair to battery maintenance and long term storage charging.

# Battery Service Equipment

## CHARGERS

### Bench Chargers

**SOLAR®**  
**PRO-LOGIX**



**SOLPL2320**  
**6/12V 20/10/2A**

**PRO-LOGIX Battery Charger**

- Provides the ability to properly charge virtually any lead acid battery type: conventional, AGM, Gel Cell, Spiral Wound, marine and Deep Cycle batteries
- Features a Soft Start mode for severely depleted batteries and a Recondition mode to rejuvenate distressed batteries
- 0-20A power supply mode for diagnostics and on-vehicle repairs



**SOLPL2310**  
**6/12V 10/6/2A**  
**Solar PRO-LOGIX**  
**Battery Charger**

- Automatic shut-off
- Provides the ability to properly charge virtually any lead acid battery type: conventional, AGM, Gel Cell, Spiral Wound, marine and Deep Cycle batteries
- Advanced multi-phase charging process
- Features a Soft Start mode for severely depleted batteries and a Recondition mode to rejuvenate distressed batteries
- 0-10A power supply mode for diagnostics and on-vehicle repairs



**SOLPL2310G**  
**10A 6/12V PRO-LOGIX**  
**Battery Charger**

- 10/6/2A charge rates
- Properly charges all battery types
- 0-10A power supply mode for diagnostics and on-vehicle repairs



**SOLAR®**  
**PRO-LOGIX**



**SOLPL2520**  
**20 Amp 6/12V Solar PRO-LOGIX**  
**Battery Charger with Boost**

- Temperature compensation feature adjusts charging parameters based on ambient temperature
- 1 year limited warranty

**ASSOCIATED**



**ASO6010B**  
**Heavy Duty Commercial Portable**  
**Battery Charger, 6/12/24 Volt**

- 4 charging positions; battery voltage - 6/12/24; continuous ratings - 60/60/30; Amp boost rating - 420 Amp; Crank Assist rating - 230 Amp; Clamps - 500 Amp rating
- 120 minute automatic timer
- Vacuum impregnated heavy-duty transformer
- Multi diode rectifiers (patented) to take over in case of failure
- Patented "Stop/Go light" technology
- 500 Amp clamps are covered with vinyl insulation; will not arc or spark
- 5 year limited warranty

**WARNING:** Cancer and Reproductive Harm - [www.P65Warnings.ca.gov](http://www.P65Warnings.ca.gov)

# Battery Service Equipment

## CHARGERS

### Portable Chargers

# NOCO



#### **NOCG1100 NOCO Genius 1.1A Multi-Purpose Battery Charger**

- Charge fully drained 6V & 12V lead-acid and lithium-ion batteries up to 40Ah, including ATVs, lawn mowers, motorcycles and cars; Safely maintain all types of automotive, marine, RV, powersport, lawn & garden and deep-cycle batteries
- Charge 2x faster, repair damaged batteries and use with micro-hybrid start-stop vehicles and CANBUS electrical systems
- Water-resistant (IP65)

**⚠ WARNING:** Cancer and Reproductive Harm - [www.P65Warnings.ca.gov](http://www.P65Warnings.ca.gov)

#### **NOCG7200 Noco Genius 7.2A Multi-Purpose Battery Charger**

- Charge fully drained 12V & 24V lead-acid and lithium-ion batteries up to 230Ah,

**⚠ WARNING:** Cancer and Reproductive Harm - [www.P65Warnings.ca.gov](http://www.P65Warnings.ca.gov)

#### **NOCG3500 NOCO Genius 3.5A Multi-Purpose Battery Charger**

- Charge fully drained 6V & 12V lead-acid and lithium-ion batteries up to 120Ah

**⚠ WARNING:** Cancer and Reproductive Harm - [www.P65Warnings.ca.gov](http://www.P65Warnings.ca.gov)

#### **NOCG15000 NOCO Genius 15A Multi-Purpose Battery Charger**

- Charge fully drained 12V & 24V lead-acid and lithium-ion batteries up to 400Ah

**⚠ WARNING:** Cancer and Reproductive Harm - [www.P65Warnings.ca.gov](http://www.P65Warnings.ca.gov)

#### **NOCG26000 NOCO Genius 26A Multi-Purpose Battery Charger**

- Charge fully drained 12V, 16V & 24V lead-acid and lithium-ion batteries up to 500Ah

**⚠ WARNING:** Cancer and Reproductive Harm - [www.P65Warnings.ca.gov](http://www.P65Warnings.ca.gov)



### Solar Power



#### **SCUSP-400 4.8 Watt Solar Charger**

- Solar Powered Charger / Maintainer for 12V batteries
- 4.8 Watt output • Indoor/outdoor rated
- Thin film technology for more efficient output
- Includes battery clamps, terminal ring connectors and stainless steel mounting screws

**⚠ WARNING:** Cancer and Reproductive Harm - [www.P65Warnings.ca.gov](http://www.P65Warnings.ca.gov)

### Wheeled Chargers



#### **SCUDSR121 10/50/250 Amp, 6/12V Wheel Charger**

- 4A Maintain | 15A Fast Charge | 25 50A Boost | 250A Engine Start
- 250A Engine Start – powerful enough for SUVs, trucks and large engines
- 25 50A Boost mode – quickly brings deeply discharged battery back to life
- Microprocessor-controlled – automatically adjusts amperage rate, to charge and maintain
- Digital display, LED indicators and push-button controls



#### **SCUDSR122 10/50/275 Amp, 6/12V Wheel Charger with Power Supply**

- 4A Maintain | 15A Fast Charge | 20 60A Boost | 275/125A Engine Start
- 125A (6V)/275A (12V) Engine Start – powerful enough for SUVs, trucks and large engines
- 20 60A Boost mode – quickly brings deeply discharged battery back to life
- 65A Flash Reprogram mode
- Memory Saver mode – for saving vehicle settings while changing the battery



# Battery Service Equipment

## CHARGERS

### Wheeled Chargers



#### SCUDSR123 15/30/70/300 Amp, 12/24V Wheel Charger DOE

- 4A Maintain | 15A Fast Charge | 10 30A/10 50A Boost | 250/150A Engine Start
- 250A (12V)/150A (24V) Engine Start – powerful enough for SUVs, trucks and large engines
- 10 50A (12V) 10 30A (24V) Boost mode – quickly brings deeply discharged battery back to life
- Microprocessor-controlled – automatically adjusts amperage rate, to charge and maintain
- Safe for outdoor use



#### SCUDSR124 15/30/70/330 Amp, 6/12/24V Wheel Charger

- 4A Maintain | 15A Fast Charge | 30 80A Boost | 300/330/250A Engine Start
- 300A (6V)/330A (12V)/250A (24V) Engine Start – powerful enough for SUVs, trucks and large engines
- 30 80A Boost mode – quickly brings deeply discharged battery back to life
- 70A Flash Reprogram mode
- Extra-long output cables – 17' total reach



#### SCUDSR131 6/50/225 Amp 6/12V Wheel Charger

- 2A 6A Charge Maintain | 50A Boost | 250A/125A Engine Start
- Charges standard, AGM, Gel and deep-cycle batteries
- 250A (12V) and 125A (6V) Engine Start – powerful enough for SUVs, trucks and large engines
- 12' reach, 6-gauge output cables
- Microprocessor-controlled – automatically adjusts amperage rate, to charge and maintain



#### SCUSC1325 250A 6/12V Battery Charger

- Microprocessor controlled automatically adjusts the amperage rate to charge and maintain
- Digital display for accurate readings and precise settings
- Charges compatible battery types Standard, AGM, Gel and Deep-cycle
- Automatically detects 6 or 12 volt batteries
- 6-Gauge output cables stay flexible in cold weather



#### SCUSC1353 200/35/2 AMP Wheel Charger with LED Display

- 4A Maintain | 15A Fast Charge | 20 60A Boost | 275/125A Engine Start
- 125A (6V)/275A (12V) Engine Start – powerful enough for SUVs, trucks and large engines
- 20 60A Boost mode – quickly brings deeply discharged battery back to life
- 65A Flash Reprogram mode
- Memory Saver mode – for saving vehicle settings while changing the battery



#### SOLHT1224AGM Heavy Truck Jump Starter 12/24V (with AGM Batteries)

- 1400 cold cranking amps in 12 Volt mode
- 800 cold cranking amp in 24 Volt mode
- Automatic 7 Amp x 2 Channel Battery Charging System
- 10' Jumper Cable Leads
- Ships with (2) Group 31 AGM Batteries Installed
- 1 yr warranty on material and workmanship



# Battery Service Equipment

## CHARGERS

### Wheeled Chargers

**SOLAR®**  
**PRO-LOGIX**

**SOLPL3730**  
**6/12V 60/40/15/5/275A**  
**Pro-Logix Wheel Charger**  
**with Engine Start**

- Three operational modes: automatic charging, manual charging and engine start
- Properly charge lead acid battery type: conventional, AGM, Gel Cell, Spiral Wound, marine and Deep Cycle batteries
- Advanced multi-phase charging process delivers a proper, beneficial charge every time, improving battery health and restoring reserve capacity
- Features a Soft Start mode for severely depleted batteries and a Recondition mode to rejuvenate distressed batteries
- 0-60A power supply mode for diagnostics and on-vehicle repairs



**SOL4001**  
**Smart Starter**  
**Commercial Jump Starter,**  
**12/24 Volt**

- Accommodates 2 batteries up to Group 31 size (not included)
- Supports flooded or AGM batteries
- LED Status display plus 7-segment voltmeter
- 10 ft, 1/0 output cable gauge



Features our exclusive voltage spike protection and automatic reverse polarity protection safety features, combined with a remote start switch, for the ultimate in operator and vehicle safety. The unit powers the output leads only when a correct connection is made, avoiding costly damage from starting errors. It also features extra-long, detachable 10' output leads, heavy-duty clamps to penetrate battery corrosion, an intuitive control panel and large pneumatic wheels for easy maneuverability over all surfaces.

**SOLAR®**  
**CHARGE IT!**

**SOL4735**  
**CHARGE IT! Wheel Battery Charger**  
**12 Volt, 40/10/2/200 Amp**

- Multiple 12 Volt charging rates
- 200 Amp Engine Starting Assistance
- Slimline design for easy mobility and convenient storage
- EZ View control panel enables easy monitoring of service progress from almost any angle
- Full-size clamps penetrate corrosion on battery terminals



**CHARGE IT!**

**SOL4745**  
**Solar Charge It! 12/24V Wheel**  
**Battery Charger; 40/20/2/230A**

- 12 and 24 Volt battery charging
- 230 Amp 12V engine starting assistance
- 40 Amp 12V fast charge rate
- Fully automatic operation
- Digital display with 7-segment readout
- 1 yr warranty on material and workmanship



# Battery Service Equipment

## CHARGERS


### Wheeled Chargers

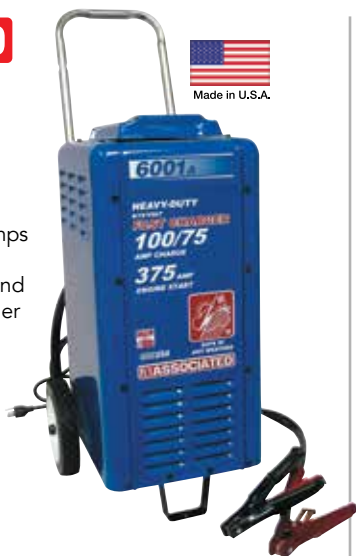
#### ASSOCIATED

##### ASO6001A

##### Heavy Duty Commercial 6-12 Volt Battery Charger

- 375 Cold Crank Amps
- 16 rates of charge; 75 Amp continuous charge with 375 Amps crank assist at 12 volts
- UL and CSA listed for indoor and outdoor use; safe in any weather
- UL continuous ratings-100/75 Amp; UL cranking assist rating-375 Amp
- 500 amp fully insulated "Flexi-Spring" clamps
- 5 year limited warranty

 **WARNING:** Cancer and Reproductive Harm - [www.P65Warnings.ca.gov](http://www.P65Warnings.ca.gov)



#### ASSOCIATED

##### ASO6009

##### 6/12V 70/60/ 2 Amp Battery Charger

- Listed for indoor and outdoor use by both UL and CUL
- Continuous ratings-70/60/2 Amp; MFGS. Boost rating - 540 AUL
- Cranking assist rating - 265A
- AC cord-6-1/2' / 16-3
- DC leads - 7' / 4AWG
- Clamp rating - 500A
- 5 year transformer/rectifier limited warranty


 **WARNING:** Cancer and Reproductive Harm - [www.P65Warnings.ca.gov](http://www.P65Warnings.ca.gov)



##### ASO6002B

##### 6/12/18/24V Battery Charger

- 600 Amp boost rating
- 400 Cold Crank Amps
- Charges 6, 12, 18, and 24 volt batteries
- Patented "Sub-Sil" multidiode rectifiers and longer AC cord and DC leads
- UL listed for indoor and outdoor use


 **WARNING:** Cancer and Reproductive Harm - [www.P65Warnings.ca.gov](http://www.P65Warnings.ca.gov)



##### ASO6012

##### 6/12V 70/60 Amp Battery Charger


- UL continuous ratings - 70/60 Amp
- MFGS. boost rating - 250A
- UL cranking assist rating - 250A
- AC cord - 6' / 16-3
- DC leads - 6-12' / 6-1/2' AWG
- Clamp rating - 400A
- 5 year limited transformer/rectifier warranty

 **WARNING:** Cancer and Reproductive Harm - [www.P65Warnings.ca.gov](http://www.P65Warnings.ca.gov)

##### ASO6006

##### 6/12/24V Battery Charger

- Increased starting power
- Rejuvenates all standard and maintenance-free 6, 12, and 24 Volt batteries with five charging positions
- UL continuous rating-70/65/30 Amp; UL cranking assist rating - 280 Amp
- UL rating indoor and outdoor

 **WARNING:** Cancer and Reproductive Harm - [www.P65Warnings.ca.gov](http://www.P65Warnings.ca.gov)



##### ASOESS6008MSK

##### 12V 60A, Intellamatic 270A Boost 15A Memory Saver Battery Charger/ Analyzer with MS6209-12 Memory Saver Cable

- 15A memory saver port with OBDII to male adapter cable
- 70A stable power supply mode for drivability diagnostics
- Patented diagnostics indicate weak or defective batteries
- Charges all types of batteries including AGM and Gel

 **WARNING:** Cancer and Reproductive Harm - [www.P65Warnings.ca.gov](http://www.P65Warnings.ca.gov)



# Battery Service Equipment

## CHARGERS

### Wheeled Chargers

#### ASSOCIATED



#### **ASOESS6008 Fully Automatic Intellamatic Battery Charger**

- 12 Volt, 60 Amp wheel charger
- Program for deep discharge and recovery with desulfation mode
- Dead battery override switch to bring batteries above the 4 volt minimum for testing and charging
- ESS provides 70A of clean stable power supply for reflashing vehicle computer systems and extended electrical system testing
- 270 Amp boost for help in jump starting vehicles
- Automatically tests and charges all types of batteries including AGM, GEL and Lead Acid


 **WARNING:** Cancer and Reproductive Harm - [www.P65Warnings.ca.gov](http://www.P65Warnings.ca.gov)

#### ASSOCIATED



#### **ASOUS20 Wheel Charger/Analyzer 6/12V 40/40/10 Amps with 200A Boost**

- 40/40/10 Amps Continuous Rating 6/12 Volts
- 200 Amp cranking assist with full 330 Amp boost rating
- 90-minute timer with hold
- Fan cooling mechanism prevents overheating
- CSA Listed US and Canada - safe in any weather
- 2 year warranty

 **WARNING:** Cancer and Reproductive Harm - [www.P65Warnings.ca.gov](http://www.P65Warnings.ca.gov)



#### **ASOESS6011 12/24V, 70/35A, 200A Boost Wheel Charger/Analyzer**


- 70 AMP power supply - nominal 13.7V DC output
- AGM, GEL Cell, Sealed and STD Flooded Batteries
- Dead battery override control
- 3 year limited warranty

 **WARNING:** Cancer and Reproductive Harm - [www.P65Warnings.ca.gov](http://www.P65Warnings.ca.gov)

#### **ASOUS18 40 Amp Wheel Charger**

- 6/12 Volt battery charger
- 200 Amp crank assist
- 330 Amp manufacturer boost rating
- Convenient bar-handle
- Safe in any weather operation (indoor and outdoor use)
- 2 year limited warranty

*While Supplies Last!*

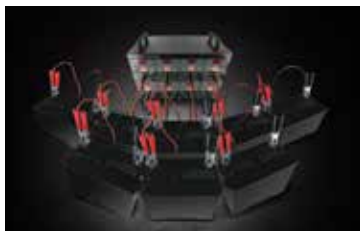
 **WARNING:** Cancer and Reproductive Harm - [www.P65Warnings.ca.gov](http://www.P65Warnings.ca.gov)



# Battery Service Equipment

## CHARGERS

### Bank Chargers



#### **SCUDSR127** **12/8/2 Amp** **Digital 8 Bank Charging Station**

- Each bank is fully automatic and microprocessor controlled
- Dual-Bank Charging - For large batteries, connect two banks to the same battery to double the charging output current to 4 to 24 amps
- Start/Stop Interface - Push button to begin or end the bank charging process
- Recovery Setting - Use to automatically recover and charge severely discharged 12 V batteries
- Safe-start, reverse polarity and short circuit protection



#### **SCUDSR125** **10 Amp 4 Bank Automatic Battery Charging Station**

- Four independent, fully automatic, microprocessor-controlled charging banks
- Automatically adjusts from 5 to 10A output per bank
- Charges 6V and 12V Standard, AGM, Gel, deep-cycle and LFePO4 batteries
- Four detachable 6 foot cables with 75 Amp, color-coded clamps
- Recovery mode – for sulfated Standard and AGM batteries
- 1 yr warranty on material and workmanship

## START-ALLS



#### **Start-All®**

- Volt and amp meter to monitor boosting output
- Voltage regulated to protect on-board electronics
- Antizap® voltage surge protection for safer boosting
- 30' 1/0 gauge welding cable allows convenient access to vehicles



#### **GDL11-605** **12 Volt, 450 Amp**

This small, compact, gasoline-powered, heavy-duty starter has 1000 amp full-power jaw clamps that allow higher amperage flow. Polarity and low battery LED indicators confirm proper connections. Features an electric start Briggs and Stratton Vanguard OHV engine with single switch for easy operation. Ideal for small fleets, in-town trucks, rental and agricultural equipment. Dimensions are 12"L x 27-1/2"W x 26"H and weighs 315 lbs.

#### **GDL11-610** **12V Start-All®, 700 Amps**

This electric start, air cooled Briggs and Stratton Vanguard OHV V-Twin gasoline engine with 2-1/4 gallon fuel tank has the output necessary for starting heavy duty vehicles and equipment. Performance you can rely on - start after start, year after year, and power that will crank engines in cold weather climates, vehicle after vehicle. Powerful 12 Volt jump starting in a compact size.

#### **GDL11-620** **Start All® 12/24 Volt 700/350 Amp Generator**

The 11-620 has the output necessary for starting heavy duty vehicles and equipment - power that will crank engines in cold weather climates, vehicle after vehicle. Powerful 12/24 volt jump starting in a compact size. Electric start, air-cooled Briggs and Stratton Vanguard OHV V-Twin gasoline engine with 2-1/4 gallon fuel tank.

# Battery Service Equipment

## START-ALLS



### Start-All®

- Voltage regulator with reverse polarity protection controls output voltage to a safe level for today's electronics
- Surge protection with Antizap provides safer boosting
- Polarity and low battery LED indicators
- Single DC boosting switch for easy operation
- Engine: Electric start, air-cooled Briggs and Stratton Vanguard OHV gasoline engine with 2 gallon fuel tank



### GDL11-612 Start-All 700 Amp 12 volt Booster and 13CFM Air Compressor

Ideal for starting any 12 Volt, up to and including semi-tractors and agricultural equipment, in cold weather climates. Cables and clamps: 30' 1/0 ga. welding cables; 1,000 Amp full-power clamps. Air compressor: single stage, 13 CFM at 100 PSI, 150 PSI max.\*  
\*Air tank required for compressor (not included).

### GDL11-622 Start All® 12/24 Volt 700/400 Amp Generator with Air Compressor

Ideal for off-road construction equipment, military, transit buses and any 12 volt application, including semi-tractors. 30' 1/0 gauge welding cable allows flexibility and ease of use, 1000 amp full-power clamps allow higher amperage flow.  
\*Air tank required for compressor (not included).

### GDL11-621 Start-All 12/24 Volt 700 Amp with AC Generator

The output necessary for starting heavy duty vehicles and equipment with the convenience of an AC generator, supplying the power to run power tools and lights to illuminate your work site.

## TESTERS

### Analyzers



Advancing Battery Management

### MIDGR8-1200AMP Multi-Tasking Battery Diagnostic Station

- Tests and charges AGM, gel, and flooded batteries
- ECM 60 Amp power supply
- Electrical diagnostic station for testing starting and charging systems
- Multitasking allows for charging a battery or using power supply while testing batteries or electrical system elsewhere in the shop
- Optional integrated printer

**WARNING:** Cancer and Reproductive Harm - [www.P65Warnings.ca.gov](http://www.P65Warnings.ca.gov)



### MIDGR8-1200AMPKIT Multi-Tasking Battery Diagnostic Station with Integrated Printer

- Includes integrated printer

**WARNING:** Cancer and Reproductive Harm - [www.P65Warnings.ca.gov](http://www.P65Warnings.ca.gov)



### MIDEXP-1000-HD-AMP Digital Battery and Electrical System Analyzer with Inductive Amp-Clamp for Heavy Duty/Fleets

- Same tester platform required by International, Kenworth, Peterbilt, and Travel Centers of America – does not provide warranty code
- Battery test routine designed for multiple-battery vehicles; pack-test up to 6 batteries in parallel without disconnecting
- Tests 6 and 12V batteries including conventional automotive, Group 31 and other commercial batteries, AGM and Gel; tests 12 and 24V starting and charging systems
- Digital multimeter capabilities with scope and infrared temperature readings

**WARNING:** Cancer and Reproductive Harm - [www.P65Warnings.ca.gov](http://www.P65Warnings.ca.gov)



# Battery Service Equipment

## TESTERS

### Analyzers



Advancing Battery Management

#### MIDCPX-900P

##### 12V Battery and Electrical System with Analyzer 4' Leads

- Midtronics' latest battery testing technology - Conductance Profiling
- Test by Year-Make-Model or manual data-entry
- 3.5" color display is easy to read
- On-tool Wi-Fi and Bluetooth capabilities support flexible network connectivity
- Supports conventional lead-acid, AGM, Gel, and EFB (enhanced flooded batteries)



In addition to Midtronics' patented Conductance algorithms on CCA testing, the CPX-900 platform adds a 1-minute, 10A load to evaluate battery Reserve Capacity. Known as Conductance Profiling, this innovative new approach compares the response of the battery under load with a broad database of known good and known bad batteries. The result is the most decisive and most accurate battery test methodology to date! CPX-900P includes integrated printer and 4' field-replaceable test leads.

#### MIDCPX-900PL

##### 12V Battery & Electrical System Analyzer with 10' Leads



#### MIDDSS-5000KIT

##### 12V Battery & Electrical System Tester

- Conductance Profiling™ combines Midtronics' most advanced Conductance test with direct temperature measurement and an all-new, load-based Reserve Capacity verification
- VIN-based testing: Battery Registration app and Reset checklist; Automatically sets the correct battery test parameters (override is possible for aftermarket batteries); Establishes vehicle records, creates a history, and helps track process compliance
- Tests conventional Flooded, AGM, Gel, and Enhanced Flooded (EFB) batteries
- Bluetooth wireless 2-Piece design: Connect base unit to the battery and do all functions from the driver's seat with Android™ powered 5" full-color touchscreen controller
- Includes DSS-5000, CVG-2BT Module, DSS-5003 Charging Dock, and A657 Amp-Clamp

#### MIDDSS-5000P

##### 12V Battery & Electrical System Tester with Printer

**WARNING:** Cancer and Reproductive Harm - [www.P65Warnings.ca.gov](http://www.P65Warnings.ca.gov)

#### MIDDSS-5003

##### Charging Dock for DSS-5000

- Included with all DSS-5000P models



Advancing Battery Management

#### MIDDSS-5000PCVG

##### 12V Battery & Electrical System Tester w/Printer

- Conductance Profiling™ combines Midtronics' most advanced Conductance test with direct temperature measurement and an all-new, load-based Reserve Capacity verification. This greatly improves both accuracy and decisiveness - fewer Charge & Retest results!
- VIN-based testing: Battery Registration app and Reset checklist; Automatically sets the correct battery test parameters (override is possible for aftermarket batteries); Establishes vehicle records, creates a history, and helps track process compliance.
- Tests conventional Flooded, AGM, Gel, and Enhanced Flooded (EFB) batteries.
- Bluetooth wireless 2-Piece design: Connect base unit to the battery and do all functions from the driver's seat with Android™ powered 5" full-color touchscreen controller.
- Includes DSS-5000 w/Printer, CVG-2BT Module and DSS-5003 Charging Dock



#### MIDDSS-5000PKIT

##### 12V Battery & Electrical System Tester w/Printer

- Midtronics' most advanced battery conductance test
- New! Load-Based Reserve Capacity verification
- VIN-based testing • Bluetooth enabled
- Tests conventional Flooded, AGM, Gel, and Enhanced Flooded (EFB) batteries

**WARNING:** Cancer and Reproductive Harm - [www.P65Warnings.ca.gov](http://www.P65Warnings.ca.gov)

#### MIDDSS-5000CVG

##### 12V Battery & Electrical System Tester

- Conductance Profiling combines Midtronics' most advanced conductance test with direct temperature measurement and an all-new, load-based reserve capacity verification
- VIN-based testing
- Battery registration app and reset checklist
- Automatically sets the correct battery test parameters (override is possible for aftermarket batteries)
- Establishes vehicle records, creates a history, and helps track process compliance
- Tests conventional flooded, AGM, Ggl, and enhanced flooded (EFB) batteries
- 2-piece wireless bluetooth design - connect base unit to the battery and do all functions from the driver's seat with Android™ powered 5" full-color touchscreen controller
- Includes DSS-5000, CVG-2BT Module, and DSS-5003 Charging Dock



**WARNING:** Cancer and Reproductive Harm - [www.P65Warnings.ca.gov](http://www.P65Warnings.ca.gov)

# Battery Service Equipment

## TESTERS

### Analyzers



#### **MIDGRX-3000 Battery Diagnostic Station**

- Tests and safely charges 6 and 12 volt batteries
- Test and charge regular flooded, AGM, and GEL batteries
- Easy to use with little or no training
- Fast - charges most batteries within 30 - 45 minutes
- Field upgradable

 **WARNING:** Cancer and Reproductive Harm - [www.P65Warnings.ca.gov](http://www.P65Warnings.ca.gov)



#### **MIDGRX-3000KIT Battery Diagnostic Station with Integrated Printer**

- Tests and safely charges 6 and 12 volt batteries
- Test and charge regular flooded, AGM, and GEL batteries
- Easy to use with little or no training
- Field upgradable
- Integrated printer - print test results for customer

 **WARNING:** Cancer and Reproductive Harm - [www.P65Warnings.ca.gov](http://www.P65Warnings.ca.gov)

# Battery Service Equipment

## TESTERS

### Analyzers

**MIDTRONICS**

Advancing Battery Management

#### MIDMDX-700HD Heavy Duty Battery/Electrical System Analyzer

- Battery pack testing (1-6 batteries) for effective preventative maintenance testing
- Special commercial battery algorithms for Group 31 batteries, 8D and 4D batteries
- 15' tester cable for efficient testing from the cab
- New clamp designed specifically for HD and commercial testing
- Print capable with optional IR printer part # A087



**WARNING:** Cancer and Reproductive Harm - [www.P65Warnings.ca.gov](http://www.P65Warnings.ca.gov)

**MIDTRONICS**

Advancing Battery Management



#### MIDMDX-P300 Battery and Electrical System Tester with Built-in Printer

- Tests regular, AGM, and Gel batteries
- Tests discharged batteries with as little as 1 Volt - battery does not have to be charged to perform test
- Bad cell detection - just replace battery; cannot be charged
- Rating systems available - CCA / SAE / DIN / EN / IEC
- Built-in printer - printer power comes from the vehicle battery
- Tests starting and charging system, providing the customer with a full system test



**WARNING:** Cancer and Reproductive Harm - [www.P65Warnings.ca.gov](http://www.P65Warnings.ca.gov)

#### MIDMDX-700P-HD HD Battery/System Analyzer with Integrated Printer

- Battery pack testing 1-6 batteries for effective preventative maintenance testing
- Special commercial battery algorithms for Group 31 batteries, 8D and 4D batteries
- 15' field replaceable tester cable for efficient testing from the cab
- New clamp designed specifically for HD and commercial testing
- Built-in integrated printer



**WARNING:** Cancer and Reproductive Harm - [www.P65Warnings.ca.gov](http://www.P65Warnings.ca.gov)

#### MIDPBT100 Automotive Battery and Electrical System Tester

- Accurately tests discharged batteries
- Reverse connection protection; safe, highly accurate testers; fast and simple to use
- Tests 12V automotive batteries from 200 - 850 CCA
- Displays voltage and color LED for battery condition
- Voltmeter mode for starter/alternator testing



**WARNING:** Cancer and Reproductive Harm - [www.P65Warnings.ca.gov](http://www.P65Warnings.ca.gov)

**MIDTRONICS**

Advancing Battery Management

#### MIDEXP-1000HDAMPKIT Heavy-Duty Expandable Electrical Diagnostic Platform

- Tests up to six batteries in parallel at one time without separating the batteries
- Tests starting and charging system and diodes
- Cable voltage drop testing and multimeter capabilities
- AMP testing capabilities including parasitic draw
- Tests Flooded, AGM, & AGM spiral batteries
- 1 yr warranty on material and workmanship

**WARNING:** Cancer and Reproductive Harm - [www.P65Warnings.ca.gov](http://www.P65Warnings.ca.gov)



# Battery Service Equipment

## TESTERS

### Analyzers



Advancing Battery Management



#### MIDPBT200

##### Automotive Battery Conductance/Electrical System Analyzer

- Conductance technology advantages make battery testing safe, fast and simple
- Proven test algorithms - also displays available power in CCAs at the end of each test
- High and low voltage capture for improved starter/charger system testing
- Tests discharged batteries
- Proven reliability and durability

**WARNING:** Cancer and Reproductive Harm - [www.P65Warnings.ca.gov](http://www.P65Warnings.ca.gov)



#### MIDEXP-1000HD

##### Advanced Battery and Electrical System Analyzer

- Battery pack testing; multiple battery routine from 1 to 6 batteries
- Special commercial battery algorithms for 4D/8D Group 31 batteries
- Tests starting/charging systems and diodes
- Truck/Automotive application specific parameters
- Cable drop testing compensation
- 1 yr warranty on material and workmanship

**WARNING:** Cancer and Reproductive Harm - [www.P65Warnings.ca.gov](http://www.P65Warnings.ca.gov)



#### MIDMDX-640

##### Digital Battery Analyzer for 6 and 12 Volt Batteries

- Tests 6 and 12 volt Flooded, AGM Flat Plate, AGM Spiral, and Gel Batteries
- Vehicle applications for automotive, motorcycle, marine cranking, lawn and garden, Group 31, and commercial 4D/8D batteries
- Tests battery in or out of the vehicle
- Field replaceable 4' leads
- Large backlit display keeps operation simple for all level of users



Includes MDX-600 series analyzer, MDX-640 software (installed), manual, stud adapters, and 4-cable set. Print results with the optional IR printer (sold separately).

**WARNING:** Cancer and Reproductive Harm - [www.P65Warnings.ca.gov](http://www.P65Warnings.ca.gov)



Advancing Battery Management



#### MIDMDX-650

##### Battery and Electrical System Analyzer

- Tests 6 and 12 Volt batteries from 100-2000 CCA
  - Tests 12 and 24 Volt starting and charging systems
  - Starter voltage drop, diode and four-point charging system test
  - Applications: auto/light truck, Commercial Group 31 and 4D/8D, power sports, lawn and garden, and marine
  - Print capability - order MIDA087 IR printer sold separately
- Includes MDX-600 Series Analyzer with MDX-650 software (installed), manual, stud-adapters, 10' removable cables, and tool bag case.

**WARNING:** Cancer and Reproductive Harm - [www.P65Warnings.ca.gov](http://www.P65Warnings.ca.gov)



#### MIDPBT300

##### Advanced Diagnostic Battery Conductance/Electrical System Tester

- Expanded test range (100 - 1400 CCA) for more applications, from compact cars to large SUVs and small trucks
- Green and red LEDs give fast decision on starter and electrical system testing
- High/low voltage capture for additional troubleshooting/diagnostics
- Same proven conductance technology and test algorithms required for warranty testing at automotive dealers around the world
- Accurate battery test decision in seconds

**WARNING:** Cancer and Reproductive Harm - [www.P65Warnings.ca.gov](http://www.P65Warnings.ca.gov)



#### MIDMDX-650PSOH

##### 6/12V Battery and 12/24V System Analyzer with Rubber Boot

- New state-of-Health graph helps ID weak batteries at a glance.
- New rubber boot helps protect the analyzer.
- New larger clamps with wider spread make in-vehicle connections easy.
- New Enhanced Flooded Battery setting for Start-Stop applications.
- Integrated printer - printouts help sell product and service!
- 1 yr warranty on material and workmanship

**WARNING:** Cancer and Reproductive Harm - [www.P65Warnings.ca.gov](http://www.P65Warnings.ca.gov)



# Battery Service Equipment

## TESTERS

### Analyzers



# BOSCH

Invented for life

**BOS1699200244**

#### **BAT 135 Battery Tester with Integrated Printer**

- Tests 6V, 12V batteries and 12V, 24V charging systems
- Tests battery capacities from 40-2,000 CCA
- Presents State of Health and State of Charge percentage
- Integrated printer to capture test results and customer records
- Test all automotive, light-duty and commercial batteries including: AGM, Gel Cell, Flooded lead-acid, Start/Stop EFB, Commercial, SLI



**SCUPST-900X**

#### **Battery and Electrical System Tester with Printer**

- Designed for testing 6V and 12V batteries, standard and AGM design
- Designed for testing 12V and 24V electrical systems
- Field replaceable cable set



**WARNING:** Cancer and Reproductive Harm - [www.P65Warnings.ca.gov](http://www.P65Warnings.ca.gov)



**SCUSBT1**

#### **Wireless Battery Tester**

- Battery test and system test
- Start stop test and EV battery test
- Capable of email/text test records
- Easy and fast Bluetooth® Pairing
- System test detailed report

# SOLAR

**SOLBA9G**

#### **40-1200 CCA Electronic Battery & System Tester 12V**

- 17-15V operating range
- 40-1200 CCA testing capacity
- Tests multiple battery types
- Bright LED display
- Reverse polarity and over-voltage protection



# SOLAR



**SOLBA7**

#### **Solar 12 Volt Electronic Battery and System Tester**

- Tests battery, starting system and charging system
- Tests multiple battery types, including Conventional, Maintenance Free, AGM, Gel Cell, Marine and Deep Cycle batteries
- Operating Range: 100 - 1200 CCA (< +/-10% Tolerance); 7V-15V
- Bright 4 digit LED display is great for bright or low light settings
- Easy-to use tester also provides LED results of battery condition and starting/charging system performance
- 1 yr warranty on material and workmanship

**SOLBA9**

#### **12V Battery and System Tester**

- Tests 12 Volt batteries, starting and charging system performance
- 7-15V operating range
- 40-1200 CCA operating range
- Compatible with many battery types, including Flooded, AGM, Spiral Wound, Gel Cell and Start-Stop batteries
- LCD display for optimal viewing in all lighting environments



**SOLBA327**

#### **Digital Battery and System Tester with Integrated Printer**

- Tests 6 and 12 Volt batteries (40 - 2000 CCA); tests 12 Volt and 24 Volt vehicle starting and charging systems
- Tests multiple battery types, including Flooded, AGM, Spiral Wound, Gel Cell and Start-Stop batteries
- Built-in printer documents battery and system test results



**SOLBA227**

#### **Electronic Battery & System Tester with Printer**

- 12 Volt battery and system testing
- Integrated printer
- Long 36" cable leads
- Precision clamps
- Backlit display
- 1 yr warranty on material and workmanship



# Battery Service Equipment

## TESTERS

### Analyzers



#### OTC3183 Digital Battery Tester

- Utilizes cost-effective conductance test technology for accurate testing at a value price point
- Quick 1 second initial results
- 12-1400 CCA range
- Analyze starting/charging system voltages
- Tests 12 Volt batteries



Measures multiple parameters within the battery to deliver accurate results. A live voltmeter allows easy starting/charging system testing. Its bright, 4 digit LED display indicates the battery's good/bad status, voltage, and available CCAs. It even compensates for cold temperatures. Detects and identifies loose leads and bad cells. Measures multiple international units: CCA, IEC, DIN, BCI and EN. Comes in a soft-side carrying case.

#### OTC3131AGM MinuteManPlus Battery and Electrical System Tester

- Updated version of our popular MinuteMan tester with added capability for AGM battery type and Spanish language menu
- Tests batteries, alternators, regulators, and starters
- Direct-from-battery tachometer feature gives RPM readings without complicated hookups to ignition system
- Ammeter/voltmeter capabilities
- Evaluates discharged or charged batteries in one minute



#### AUTBVA300 Handheld Electrical System Analyzer with 40 Amp Load

- Onboard 40 Amp load for most battery and electrical systems
- Perform complete test in less than 2 minutes
- Reverse polarity protection
- Test range 100-1600 CCA
- Optional PR 20BOLT printer available



**WARNING:** Cancer and Reproductive Harm - [www.P65Warnings.ca.gov](http://www.P65Warnings.ca.gov)



#### ASO6044-PC 500A Variable Load Battery/Electrical System Tester with Printer

- Same as ASO6044-C except includes a high speed thermal printer

**WARNING:** Cancer and Reproductive Harm - [www.P65Warnings.ca.gov](http://www.P65Warnings.ca.gov)



#### ASO12-1015 Battery Electrical System Analyzer with Printer

- Lightweight hand-held digital battery tester with Thermo Printer and USB port
- Stores last test series with or without power
- For testing all 12V automotive starting batteries rated in CCA, SAE, DIN, JIS#, IEC, EN and CA
- Also for testing vehicle's Electrical System
- Carrying case and cables included
- 1 yr warranty on material and workmanship



#### ESI726 Digital Battery/Electrical System Tester with Printer

- Features programmed test for new start/stop batteries both EFB and AGM types
- Also tests 6 and 12 Volt standard Lead-Acid, AGM Flat, AGM Spiral and VRLA/GEL batteries
- Performs complete starting/charging test on both 12 and 24 volt electrical systems
- Built-in printer prints the results for permanent service records
- Removable cable set can be replaced when clamps wear out



**WARNING:** Cancer and Reproductive Harm - [www.P65Warnings.ca.gov](http://www.P65Warnings.ca.gov)

# Battery Service Equipment

## TESTERS

### Load Testers



#### KT170210 500 Amp Carbon Pile Load Tester

- Tests 12V batteries rated as high as 1000 CCA or 160 Amp hour
- 15-second test with audible tone
- Large, color-coded dual meters
- Can also test alternators, regulators and starters
- 1 year warranty

**WARNING:** Cancer and Reproductive Harm - [www.P65Warnings.ca.gov](http://www.P65Warnings.ca.gov)



#### KT170215 Battery Tester - 100 Amp

- Internal 100 Amp load capacity
- Tests 6 and 12 Volt DC batteries
- 0-16 Volt analog display meter with zero adjust
- 10-second test cycle
- Heavy duty cables with copper-plated clamps

**WARNING:** Cancer and Reproductive Harm - [www.P65Warnings.ca.gov](http://www.P65Warnings.ca.gov)



#### KT170216 Digital Battery Tester, 125 Amp

- Internal 125 A.p load capacity
- Test 12 Volt DC batteries
- Digital voltage indicator with LED battery status
- 10-second test cycle
- Heavy duty cables with copper-plated clamps

**WARNING:** Cancer and Reproductive Harm - [www.P65Warnings.ca.gov](http://www.P65Warnings.ca.gov)



#### SOL1876 500 Amp 12V Carbon Pile Battery Tester

- Variable load capability to 1000 Amps
- Tests batteries to 2000CCA
- Adjusts for different battery voltages
- Enables starter and alternator assessment
- Easy-to-read, color coded meters
- Heavy-duty clamps



#### OTC3181 130 Amp Heavy-Duty Battery Load Tester

- 130 Amp load capacity for accurate results
- 0-16 Volt range
- Uniquely designed clamps for both top and side post batteries
- Extra large display with zero adjust
- Works on both 6 and 12 Volt batteries

**WARNING:** Cancer and Reproductive Harm - [www.P65Warnings.ca.gov](http://www.P65Warnings.ca.gov)



#### OTC3180 100 Amp Battery Load Tester

- Heavy duty, copper-plated clamps
- 100 Amp load capacity
- 0-16 Volt range
- Load safety switch prevents arcing
- Heavy duty, chrome-plated, ventilated steel case
- Works on both 6V and 12V batteries



#### ASO6036B-24 Carbon Pile Load Tester 6/12/24V 1000A

- High-volume testing and fleet use
- Tests 6/12/24 Volt batteries
- 1000A load; tests batteries up to 2000 CCA
- Cools with high RPM fan for continuous testing

**WARNING:** Cancer and Reproductive Harm - [www.P65Warnings.ca.gov](http://www.P65Warnings.ca.gov)



#### ASO6039 Load Tester 600A Digital 6/12V

- Test batteries up to 1200 CCA
- Narrow Threaded shaft for fine adjustment
- Temperature compensation chart
- Easy to read digital voltmeter and ammeter combine with the versatility of a carbon pile load to give precise determine of battery and charging system problems

**WARNING:** Cancer and Reproductive Harm - [www.P65Warnings.ca.gov](http://www.P65Warnings.ca.gov)



# Battery Service Equipment

## INVERTERS



### SCUPI-140

#### 140 Watt Inverter with USB Port

- Plugs into 12V port
- 140 watts of power to operate laptop computers, DVD players and more plus a 5 volt USB port
- Fan cooled operation
- 1 year warranty



### SCUXI41B

#### 410W Power Inverter

##### with Battery Clamps and 12V Male Adapter Plug

- Converts vehicle power to 120VAC household power
- Compatible with all smartphones, tablets and USB devices
- 2A USB port – 2X faster
- Low battery alarm
- ON/OFF switch
- LED indicators
- Surge protection – Protects against damaging current fluctuations
- Built-in, high-speed cooling fan



### SOLPI1500X

#### 150W Power Inverter

- 150 Watts continuous power
- 300 Watts peak power
- 1 AC outlet
- 1 USB outlet
- Powered via 12V adapter
- Under/over voltage protection
- Short circuit protection



### SOLPI10000X

#### 1000 Watt

##### Power Inverter

- 1000 Watts continuous power
- 2000 Watts peak power
- 2 AC Outlets
- Mounting plate for fixed applications



Sonic Compression technology delivers clean, reliable power from a 12 Volt power source to a wide variety of power equipment and appliances.



### SOLPI15000X

#### 1500 Watt Power Inverter

- 1500 Watts continuous power
- 3000 Watts peak power
- 3 AC outlets
- Mounting plate

Delivers clean, reliable power from a 12 Volt power source to a wide variety of power equipment, tools and appliances. Features a variety of safety features, including overload protection, overheat protection, low voltage alarm, low voltage shut down and over-voltage shut down. Convenient display provides status of input voltage and output wattage to help manage power demands.



### SOLPI20000X

#### 2000 Watt Power Inverter

- 2000 Watts continuous power
- 4000 Watts peak power
- 3 AC outlets
- Mounting plate



### SOLPI30000X

#### 3000 Watt Power Inverter

- 3000 Watts continuous power
- 6000 Watts peak power
- 3 AC outlets
- Junction block connection
- Remote switch
- Mounting plate

# Battery Service Equipment

## POWER SUPPLIES

**MIDTRONICS**

Advancing Battery Management

### 70 Amp

#### Power Supply Charger

- Replaces Midtronics PSC Series
- Peak output 14.4V and 70-amps
- New platform designed from the ground-up
- Field-replaceable, rugged 2-meter cable/clamp set
- Adjustable voltage settings: 13.2, 13.6, and 14.4 VDC
- Safe for use on conventional flooded batteries, Gel, AGM and EFB (enhanced flooded batteries)
- Provisioned to update for Li-Ion in the future
- Ideal for maintaining battery voltage during ECU re-flash

**WARNING:** Cancer and Reproductive Harm - [www.P65Warnings.ca.gov](http://www.P65Warnings.ca.gov)

#### MIDMSP-070-2

MIDMSP-070-3 - 3-meter cable/clamp set

MIDMSP-070-5 - 5-meter cable/clamp set



**DSR**  
POWERED BY SCHUMACHER



### SCUINC100

#### Adjustable High Output Power Supply

- Battery Charger/Power Supply
- 100 Amp Microprocessor Controlled
- Heavy-duty clamps
- Dual temperature controlled cooling fans
- Durable aluminum case

**OTC**



### OTC700A 70 AMP

#### Power Supply/Battery Charger

- A power supply for Flash Reprogramming is a device that connects to the vehicle's battery and outputs a designated supply of clean DC power
- Constant voltage output selectable from 13.0 to 14.8V DC
- Output current up to 70 amps
- Fully automatic operation for 12V batteries
- Digital volts and amps display

## BOOSTER CABLES

**K TOOL**  
INTERNATIONAL

### KT174500

#### 12' Light Duty

#### 10 Gauge Booster Cables with 250 Amp Clamps

- Tangle-free design
- Flexible to -40° F
- Vinyl-coated clamps help prevent rust and corrosion
- For side and top battery post

**WARNING:** Cancer and Reproductive Harm - [www.P65Warnings.ca.gov](http://www.P65Warnings.ca.gov)



### KT174505

#### 12' Medium Duty 8 Gauge Booster Cables with 400 Amp Clamps

- Tangle-free design
- Flexible to -40° F
- Vinyl-coated clamps help prevent rust and corrosion
- For side and top battery post



### KT174510

#### 16' Medium Duty 6 Gauge Cables with 400 Amp Clamps

**WARNING:** Cancer and Reproductive Harm - [www.P65Warnings.ca.gov](http://www.P65Warnings.ca.gov)



### KT174521

#### 16' Heavy Duty 4 Gauge Cables with 400 Amp Clamps

- Tangle-free design
- Flexible to -40° F
- Vinyl-coated clamps help prevent rust and corrosion
- For side and top battery post



### KT174523

#### 20' Heavy Duty 4 Gauge 500 Amp Clamps

### KT174524

#### 20' Heavy Duty 4 Gauge 400 Amp Clamps

**WARNING:** Cancer and Reproductive Harm - [www.P65Warnings.ca.gov](http://www.P65Warnings.ca.gov)



### KT174530

#### 25' Extra Heavy Duty 2 Gauge Cables with 500 Amp Parrot Jaw Clamps

- Tangle-free design
- Flexible to -40° F
- Vinyl-coated clamps help prevent rust and corrosion
- For side and top battery post

**WARNING:** Cancer and Reproductive Harm - [www.P65Warnings.ca.gov](http://www.P65Warnings.ca.gov)

# Battery Service Equipment

## BOOSTER CABLES



### KT174535

#### 500 Amp Parrot Claw Booster Cable Replacement Clamps

- Replacement side terminal extension cable clamps for professional grade booster cables

**WARNING:** Cancer and Reproductive Harm - [www.P65Warnings.ca.gov](http://www.P65Warnings.ca.gov)



#### Booster Cable Replacement Clamps

- Vinyl-coated clamps help prevent rust and corrosion

**KT174536** - 400 Amp

**KT174537** - 500 Amp

**KT174538** - 800 Amp



**WARNING:** Cancer and Reproductive Harm - [www.P65Warnings.ca.gov](http://www.P65Warnings.ca.gov)



### FJC45245

#### 2 Gauge, 25 ft. 600 AMP

#### Parrot Claw Professional Booster Cables

- Tangle free design
- Medium to commercial duty
- High/Low temperature construction
- Heavy duty jaws
- Copper-clad aluminum wire
- Repair only up to 90 days
- Ideal for any technician or shop
- Tangle free cable design
- High quality, 2 gauge, 25 foot, 500 amp clamp

### FJC45255

#### 1 Gauge 25 ft. 800 AMP HD Clamp Booster Cables

- High quality, 1 gauge, 25 foot, 600 amp clamp
- Tangle free cable design
- Medium to commercial duty
- High/Low temperature construction
- Copper-clad aluminum wire
- Repair only up to 90 days



### FJC45265

#### 2/0 Ga. Booster Cables with 800 Amp Commercial Grade Clamps

- Professional
- 25' Cables
- Portable Battery Charge Test



### SOL401252

#### 25' Heavy Duty 1 Gauge Booster Cables

- Cables remain flexible in all weather, down to -40C
- Heavy-duty 800A industrial grade clamps penetrate battery corrosion for effective connection
- Tangle-free single cable design is easy to use, transport and store
- 1 Year limited warranty



### SOL422252

#### 25' Heavy Duty 2/0 Gauge Cable



### AS06139

#### Plug-In Starting System Cable

- Stainless steel receptacle mounts onto a truck bumper and connects directly to a battery
- Includes 25' tangle-free starting cables, side terminal adapters, and polarized LEXAN plug • 500 Amp clamps

**WARNING:** Cancer and Reproductive Harm - [www.P65Warnings.ca.gov](http://www.P65Warnings.ca.gov)



### GDL32-030

#### 12/24 Volt Antizap® Surge Protection

- Simply clip the booster clamps across the battery, and when the green LED illuminates the system is then protected from spikes and surges while the vehicle is being worked on
- Body shops and muffler shops can use the Service Minder when carrying out all forms of electric welding, including Tig, Argon Arc and Mig, on a vehicle— with the battery connected!
- The Service Minder not only protects the on-board electronics but dispenses with the need to disconnect the battery resulting in lost stereo and other electronic memories
- Fully insulated booster clamps with 2-function Antizap® protection
- Red indicates no Antizap protection, while green indicates correct Antizap protection
- 1 yr warranty on material and workmanship

# Battery Service Equipment

## BATTERY TOOLS



### KT152009

#### Heavy Duty Cable Cutters

- 9-1/4" Length
- Jaws open to approximately 2"
- For use in cutting copper and aluminum
- Do not use on steel wire or ACSR cable

**WARNING:** Cancer and Reproductive Harm - [www.P65Warnings.ca.gov](http://www.P65Warnings.ca.gov)



### CHA911

#### Cable Cutters

- Cuts up to 4/0 aluminum and 2/0 soft copper
- High carbon C1080 steel for superior performance

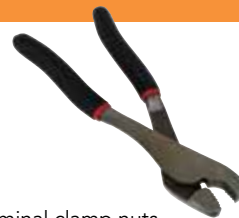


### EZRBK1914

#### Battery Service Kit

- Lifetime warranty

Kit includes: BK541 - 4 in 1 terminal cleaner, BK706 - battery terminal puller, BK708 - battery terminal 10mm ratchet, BK725 - battery pliers, BK703 - battery terminal 5/16" ratchet, BK 705 - battery terminal 5/16" ratchet extended, BK720IM - battery terminal spreader/cleaner.



### LIS55240

#### Battery Nut Pliers

- Used to loosen or tighten battery terminal clamp nuts
- Offset handle design for working in tight spaces
- Serrated jaws for grip.
- Dual material Plastisol Dipped grips for comfort
- Shipping Weight: 0.5 lbs approx.

**WARNING:** Cancer and Reproductive Harm - [www.P65Warnings.ca.gov](http://www.P65Warnings.ca.gov)

## Fluid Testers



### KT170212

#### Hydrometer Battery Tester

- Hydrometer immediately and accurately tests battery life whether the battery is hot or cold
- Help extend battery life and detects overcharge
- Assists in preventing dead batteries
- Works on all 6-12-24 Volt systems

**WARNING:** Cancer and Reproductive Harm - [www.P65Warnings.ca.gov](http://www.P65Warnings.ca.gov)

## Brushes



### KT170220

#### Battery Terminal Brush

- All metal battery terminal cleaner promotes longer battery life

**WARNING:** Cancer and Reproductive Harm - [www.P65Warnings.ca.gov](http://www.P65Warnings.ca.gov)

## Lifters



### EZRS520

#### Side Battery Lifter

- Rubber pads adhered with strong adhesive
- Non-slip ribbed vinyl hand grip
- Lift batteries from 4 1/2 to 7 1/2" wide

# Battery Service Equipment

## POWER BANKS

### MIZCO

#### MIZTT-PBW-SW24

##### Bigfoot 24,000mAh

##### Solar Power Bank with High-Speed USB-C

- Compatible with all USB Connected Devices
- Dual 2.4A USB Output 2018
- 400mA Super High Efficiency Solar Panel
- 24000mAh/88.8Wh Capacity
- Solar Only Charging Time 2.5 hrs per 1000mA
- 5 yr warranty on material and workmanship



#### MIZTT-PBW85

##### Tough-Tested Rugged IP65 Weatherproof 8000 mAh Dual USB Battery Pack

- Compatible with all USB Connected Devices
- Dual 2.1A USB Output
- 8000mAh/29.6 Wh Capacity
- InstaSense Technology
- 5 yr warranty on material and workmanship



#### MIZTT-PBW-SW8

##### Solar Power Bank 8,000mAh with Flashlight

- Compatible with all USB Connected Devices
- Dual 2.1A USB Output
- 180mAh High Efficiency Solar Panel
- 8000mAh/29.6Wh Capacity
- Solar Only Charging Time 5.5 hrs per 1000mAh
- 5 yr warranty on material and workmanship



#### MIZTT-PBW-LED6

##### Power Bank 6,000mAh with High Powered LED Floodlights

- Compatible with all USB Connected Devices
- Dual 2.1A USB Output
- 400 Lumens 4 mode 18 LED array
- 6000mAh 22.2WH Capacity
- 5 yr warranty on material and workmanship



#### MIZTT-PC8-IP2

##### PRO Armor Weave

##### Lightning to USB 8' Cable with Slim Tip

- PET polymer casing is 50% stronger than regular plastic casing
- Compatible with Apple® iPod®, Apple® iPhone® & Apple® iPad®
- Fits most OtterBox® & LifeProof® cases
- Chemical-, heat- & abrasion-resistant
- Exceptional durability compared to the standard round cable
- 5 yr warranty on material and workmanship



### EVOCHARGE

#### EVO30-101-002

##### EVoReel EV Charger - Wall or Ceiling Mount

- J1772 AC Level 2 (208-240 VAC) - Standard J1772 connector type for use with all Electric Vehicles (EVs) sold in North America
- 30A continuous rated (7.2 kW)
- Adjustable maximum current output: 30A, 24A, 16A to support multiple circuit ratings (40A, 30A, 20A)
- Modern, elegant & compact design EVSE form factor smaller than a standard sheet of letter-size paper
- Robust construction, certified for outdoor use: robust, durable design; tamper-resistant features; NEMA 4 certified for outdoor and indoor use
- 2 yr warranty on material and workmanship



#### EVO30-402-002

##### EVoReel EV Charger - Dual Port Pedestal

- J1772 AC Level 2 (208-240 VAC) - Standard J1772 connector type for use with all Electric Vehicles (EVs) sold in North America
- 30A continuous rated (7.2 kW)
- Adjustable maximum current output: 30A, 24A, 16A to support multiple circuit ratings (40A, 30A, 20A)
- Modern, elegant & compact design EVSE form factor smaller than a standard sheet of letter-size paper
- Robust construction, certified for outdoor use: robust, durable design; tamper-resistant features; NEMA 4 certified for outdoor and indoor use
- 2 yr warranty on material and workmanship

