





ABRASIVES | grinding Index:

Surface Prep Discs	266-268
Surface Prep Disc Holders	268
Bristle Discs	268
Sand Paper	269-273
Sanding Blocks/Sponges/Pens	273-274
Scuff Pads	274
Flap Wheels	275
Grinding Wheels	275-276
Grinding Burrs	276-277
Cut-Off Wheels	278-280
Cut-Off Wheel Accessories	280
Brushes:	
Wire/Scratch Brushes	281
Parts Brushes	282
Utility Brushes	282
Specialty Brushes	282
Wire Brushes/Wheels	283

SURFACE PREP DISCS



MTN8480
2" Coarse Roloc™
Surface Prep Disc, 25 Per Box

MTN8481
2" Medium Roloc™ Disc, 25 Per Box

MTN9485
3" Coarse Roloc™ Disc, 25 Per Box

MTN9486
3" Medium Roloc™ Disc, 25 Per Box

WARNING: Cancer and Reproductive Harm - www.P65Warnings.ca.gov



3M™ Green Corps™ Roloc™ Discs, 25 Per Box

- The versatility of Roloc™ with the premium quality of Green Corps
- Generally used for hard to reach areas in paint, rust and weld removal
- Handy quick change tool for disc grinding which fits any standard 1/4" drill or air tool
- Quick 1/2 turn on, 1/2 turn off speeds disc changing
- Color coded

Abrasive backing type: cloth; abrasive backing weight: YF weight; abrasive mineral type: aluminum oxide

SURFACE PREP DISCS - (GREEN CORPS, SANDING DISCS)

MMM1396 - 2" 50 Grit (25 Per Box)

MMM1397 - 2" 36 Grit (25 Per Box)

MMM1398 - 2" 24 Grit (25 Per Box)

MMM1406 - 3" 50 Grit (25 Per Box)

MMM1407 - 3" 36 Grit (25 Per Box)

MMM1408 - 3" 24 Grit (25 Per Box)



MMM7480
2" Coarse Scotch Brite™ Roloc™
Surface Conditioning Discs, 10 Per Box

- Quick 1/2 turn on, 1/2 turn off Roloc™ disc fastening system
- Use with 3M™ Roloc™ Disc Pad MMM5539
- Best used on steel parts
- Maximum operating speed: 25,000 rpm



SURFACE PREP DISCS - ROLOC™ (For Steel Parts)

MMM7480 - 2" Coarse (25 Per Box)

MMM7481 - 2" Medium (25 Per Box)

MMM7482 - 2" Medium (25 Per Box)

MMM7485 - 3" Coarse (25 Per Box)

MMM7486 - 3" Medium - Red (25 Per Box)

MMM7513
3" Very Fine Scotch Brite™ Roloc™
Surface Conditioning Discs,
25 Per Box

- Quick 1/2 turn on, 1/2 turn off Roloc™ disc fastening system
- Best used on aluminum parts
- Maximum operating speed: 18,000 rpm
- Use with 3M™ Roloc™ Disc Pad MMM5539
- Abrasive mineral type: aluminum oxide



SURFACE PREP DISCS - ROLOC™ (For Aluminum Parts)

MMM7515 - 2" Very Fine Blue (25 Per Box)

MMM7516 - 2" Super Fine Gray (25 Per Box)

MMM7713
2" Scotch-Brite™ Roloc™
Gasket Removal Disc, Coarse

- 6 discs per pack
- Ideal for removing old gasketing residue and preparing a surface for a new gasket
- Best used on steel



NORTON

Non-Woven Quick-Change Disc CRS

- Bear-Tex Surface Blending discs deliver superior consistent finishes whenever you need to clean, debur, blend or finish
- Thick reinforced non-woven backing is impregnated with a tough aluminum oxide abrasive
- Discs feature a hook and loop fastening system

NOR09194 - 3" **NOR09191** - 2"



SURFACE PREP DISCS



Scotch Brite™ Surface Conditioning Discs

- Used to quickly remove cut cork or paper gaskets and form-in-place gasket materials prior to the assembling of power train components
- Ideal for cleaning light oxidation and removing gasket residue
- Use on wide variety of surfaces, including engine blocks, heads, valve covers and transmission housing

MMM7450

4" Scotch Brite™ Surface Conditioning Discs Coarse Brown, 10 Per Box

- Attaches to 3M™ disc pad 07492
- Best used on steel parts
- Maximum operating speed: 13,000 rpm

MMM7451

4" Scotch Brite™ Surface Conditioning Discs Medium Maroon, 10 Per Box

MMM7453

2" Scotch Brite™ Surface Conditioning Discs

- Coarse Brown, 25 Per Box
- Attaches to 3M™ disc pad 07494
- Maximum operating speed: 23,000 rpm



MMM3171

3M™ Rust and Paint Auto-Pak Automotive Stripper - 4" diameter

- Removes rust, scale and old paint from metal
- Attaches easily to an electric drill
- Made from tough, non-woven synthetic material
- Flexible - won't rust or splinter
- Can also be used for sanding wood, fiberboard and plastics



MMM7461

3" Scotch-Brite™ Roloc™ Coating Removal Disc

- Great for removal of undercoatings, stone guards, seam sealers and rust
- Works well under hood webs, in truck beds, door jambs, undercarriage and wheel wells
- Mounts onto 3M™ Roloc™ Holder MMM5540
- Maximum operating speed: 15,000 rpm



MMM7466

Scotch Brite™ Clean and Strip Black Disc 4" x 1/2"

- Maximum operating speed 8,000 rpm
- 3-dimensional abrasive web conforms to work area
- Durable web designs last longer and will not rust
- Discs used with Roloc™ plus holder system



2" Blue Zirconia Mini Grinding Discs

- Aggressive mini grinding discs
- Flexible long lasting discs resist chipping, snags and cracking
- Compatible with Twist-to-Lock or 3M Roloc™ backing pad assemblies

SHARK BLUE ZIRCONIA MINI GRINDING DISCS

SRK13242 - 2" 24 Grit (25 Per Box)

SRK13243 - 2" 36 Grit (25 Per Box)

SRK13244 - 2" 50 Grit (25 Per Box)

SRK13245 - 2" 80 Grit (25 Per Box)

SRK13251 - 3" 36 Grit (25 Per Box)

SRK13252 - 3" 50 Grit (25 Per Box)

Shark® Extra-Life Surface Prep Discs

- For cleaning and finishing on all metals, removal of light rust, oxidation, coatings and gaskets
- Use with Twist-to-Lock backing pad assembly, sold separately



SHARK EXTRA-LIFE SURFACE PREP DISCS

SRK13062 - 2" Coarse (25 Per Box)

SRK13219 - 2" Coarse (100 Per Box)

SRK13018 - 2" Medium (25 Per Box)

SRK13019 - 3" Coarse (25 Per Box)

SRK13020 - 3" Medium (25 Per Box)



Shark® Aluminum Oxide Mini Grinding Discs



- Great for general purpose uses
- Flexible long lasting discs resist chipping, snags and cracking
- Compatible with Twist-to-Lock or 3M Roloc™ backing pad assemblies

SHARK ALUMINUM OXIDE MINI GRINDING DISCS

SRK13226 - 2" 24 Grit (25 Per Box)

SRK13227 - 2" 36 Grit (25 Per Box)

SRK13229 - 2" 80 Grit (25 Per Box)

SRK13234 - 3" 24 Grit (25 Per Box)

SURFACE PREP DISCS



Surface Conditioning Disc

- Ceramic Quick Change discs
- Multi-Purpose



Part #	Size	Grit	Color	Qty
TMRMI297-50	2"	Medium	Maroon	50
TMRMI197-50	2"	Coarse	Brown	50
TMRMI17-25	3"	Coarse	Brown	25

TMRMI215-100

2" Aluminum Oxide Abrasive Disc 36 Grit - 100 Pack

- Max RPM 25,000

TMRMI306-50

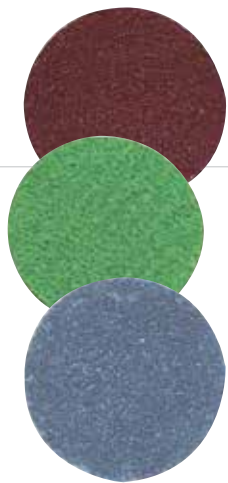
2" Green Zirconia Abrasive Disc - 36 Grit - 50 Pack

- Ceramic quick change discs
- 25,000 Max RPM

TMRMI203-50

2" Blue Zirconia Disc - 36 Grit - 100 Pack

- 25,000 Max RPM



BRISTLE DISCS



MMM7524

2" Scotch-Brite™ Roloc™ Bristle Discs, 50 Grit Coarse Green, 10 Per Box

- Super tough plastic bristle brush, embedded with abrasive wear as they clean, continually exposing fresh abrasive
- Eliminates the danger of loose wires flying back at operator
- Maximum operating speed: 25,000 rpm
- Best used on harder metal such as steel
- Bristles ride over surface cleaning contaminants without gouging surface
- Use with 3M™ Roloc™ disc pad MMM5539

ROLOC™ BRISTLE DISCS

MMM7525 - 2" 80 Grit (10 Per Box)

MMM7526 - 2" 120 Grit (10 Per Box)

MMM7527 - 3" 80 Grit (10 Per Box)

MMM7528 - 3" 120 Grit (10 Per Box)

MMM7529 - 3" 120 Grit (10 Per Box)

PREP DISC HOLDERS



AST2SPK

2" Roloc™ Holder and 4 Pads Surface Prep Kit

- Includes: 1 - 2" Roloc holder
- (4) 2" Roloc surface prep pads



MTN8539

2" Surface Prep Holder with 1/4" Shank

MTN8540 - 3" with 1/4" Shank

WARNING: Cancer and Reproductive Harm - www.P65Warnings.ca.gov



MMM5539

2" Roloc™ Disc Pad Assembly

- Backup pad designed to support 3M™ Roloc™ 2" diameter abrasive discs
- This pad had a 1/4-20 INT thread which allows it to be mounted directly to tools with 1/4 -20 EXT threaded shafts
- Assembly also includes a Roloc™ shank an adapter
- Maximum operating speed: 25,000 rpm

MMM5540

3" Roloc™ Disc Pad Assembly

- Maximum operating speed: 20,000 rpm
- Provides support for the 3M™ Roloc™ Bristle discs



Scotch Brite™

Surface Conditioning Disc Pad

- Disc pad connects quickly and easily to any power tool for 4" discs while holding Scotch-Brite™ hook and loop surface conditioning discs securely and safely

MMM7492 - 4" **MMM7493** - 3" **MMM7494** - 2"



Quick Change, Type R Backing Pads

- Sturdy rubber backing pad works with any 3M or Type "R" twist-to-lock discs
- Metal insert with 1/4" mandrel for use in angle grinders and air die grinders

SRK13012 - 2" **SRK13013** - 3"

SAND PAPER



MMM2591

3M™ Stikit™ Gold Sand Paper Sheet Roll 2-3/4" x 45 yd.

- Use for fine featheredging or last final sanding step before priming
- Coated abrasive roll with a pressure-sensitive adhesive backing
- Abrasive backing weight: A weight
- Abrasive mineral type: aluminum oxide
- Use on file shoes, sanding blocks or file boards
- 100% of the abrasive surface is used
- FEPA grade: P320

MMM2595

3M™ Stikit™ Gold Sheet Roll 2-3/4" x 45 yd.

- FEPA grade: P180

MMM2599

3M™ Stikit™ Gold Sheet Roll 2-3/4" x 25 yd.

- Abrasive backing weight: A weight
- FEPA grade: P80



6" 3M™ Stikit™ Gold Disc Roll

- Used for fine feather-edging or last final sanding step before priming
- Abrasive mineral type: aluminum oxide
- FEPA grade: P320



Part #	Size	Shape	Attachment	Grade	Per Roll
MMM1435	6"	Round	PSA	P320	175
MMM1441	6"	Round	PSA	P120	125
MMM1443	6"	Round	PSA	P80	125
MMM2591	2-3/4"	Rectangular	PSA	P320	45 yds
MMM2595	2-3/4"	Rectangular	PSA	P180	45 yds
MMM2599	2-3/4"	Rectangular	PSA	P80	45 yds
MMM31435	6"	Round	PSA	P300	5
MMM31443	6"	Round	PSA	P80	5



3M™ Stikit™ Blue Abrasive Sheet Rolls

- A best-in-class abrasive sheet roll offering for the entire repair and paint preparation process
- Engineered ceramic mineral blend is balanced for maximum abrasive performance in its class
- Upgraded resins improve durability and finish
- Anti-loading coating prevents dust and debris from clogging the cutting surface

Part #	Grade	Length	Width	Rolls per Case
MMM36215	40	10 Yards	2-3/4"	5
MMM36217	80	20 Yards	2-3/4"	5
MMM36219	120	30 Yards	2-3/4"	5
MMM36220	150	30 Yards	2-3/4"	5
MMM36221	180	30 Yards	2-3/4"	5
MMM36222	220	30 Yards	2-3/4"	5
MMM36223	240	30 Yards	2-3/4"	5
MMM36225	320	45 Yards	2-3/4"	5
MMM36226	400	45 Yards	2-3/4"	5
MMM36227	500	45 Yards	2-3/4"	5
MMM36228	600	45 Yards	2-3/4"	5



3M™ Stikit™ Blue Abrasive Disc Rolls

- Engineered ceramic mineral blend is balanced for maximum abrasive performance in its class
- Upgraded resins improve durability and finish

Part #	Grade	Size	Discs per Roll	Rolls per Case
MMM36200	40	6"	100	5
MMM36202	80	6"	100	5
MMM36204	120	6"	100	5
MMM36205	150	6"	100	5
MMM36206	180	6"	100	5
MMM36207	220	6"	100	5
MMM36208	240	6"	100	5
MMM36210	320	6"	100	5
MMM36211	400	6"	100	5
MMM36212	500	6"	100	5
MMM36213	600	6"	100	5
MMM36214	800	6"	100	5

SAND PAPER

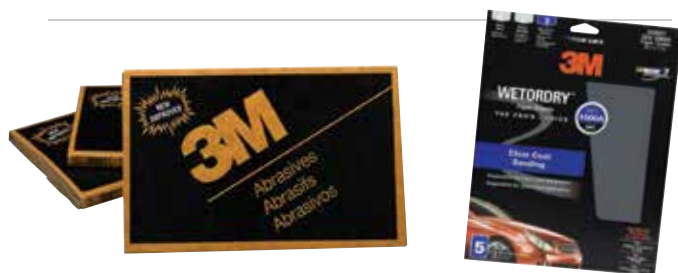
3M

3M™ Softback Sanding Sponge Sheets - Rectangular

- Flexible, abrasive coated foam sheets
- Flexible foam pad enable user to sand hard to reach areas such as headlight openings, around door handles, door jambs, etc.
- Helps to eliminate finger marks and can be used wet or dry



Part #	Size	Grade	Per Box
MMM2602	4-1/2" x 5-1/2"	Superfine	20
MMM2604	4-1/2" x 5-1/2"	Fine	20



3M™ Imperial™ Wetordry™ Rectangular Paper Sheets

- For leveling minor dust nibs and light sanding to adjust mismatched orange peel on all automotive paints
- Most flexible backing with more consistent scratch pattern make this 3M's best wet sanding product
- Sheet size eliminates the need for tearing

Part #	Size	Attachment	Grade	Qty
MMM2023	5-1/2" x 9"	Block/Sander	MF1500	50
MMM2044	5-1/2" x 9"	Block/Sander	MF2000	50

Part #	Size	Attachment	Grade	Qty
MMM32035	9" x 11"	Block/Sander	P800	5
MMM32036	9" x 11"	Block/Sander	P600	5
MMM32038	9" x 11"	Block/Sander	P400	5
MMM32040	9" x 11"	Block/Sander	P320	5
MMM32043	9" x 11"	Block/Sander	P220	5

MMM2115 3M™ 9" x 11" Paper Sheets - 50 Sheets per Sleeve

- Dry sanding only on machine or by hand
- Used for finishing plastic filler and scratch refinement of bare metal
- For non-critical, short term application
- Abrasive mineral type: aluminum oxide
- ANSI grade: 80



NORTON

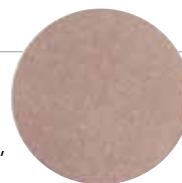


NOR39370 Black Ice Waterproof Sand Paper, 5-1/2 x 9"

- Works great wet or dry and gives the same cut no matter how you use it
- Specially treated waterproof paper does not require soaking, is curl resistant and will not deteriorate

3" Hook and Loop Disc

- Premium P-graded, heat treated aluminum oxide abrasive for superior life, fast cut rate, consistent finish
- Unique fiber reinforced, flexible B-wt. latex saturated backing for 50% - 60% improvement in tear strength while retaining flexibility



NOR31524 - 320 Grit NOR31528 - 180 Grit

NOR06002 3" Dry Ice Nor-Grip Discs 1500 Grit, 50 Pack

- Hook and loop fastener
- Multiple vacuum hole design increases dust and debris extraction
- Light B-weight backing is flexible and offer a more consistent finish than cloth or fiber
- P-graded ceramic aluminum oxide abrasive is a self-sharpening grit that last longer than aluminum oxide



NOR47433 3" Speed-Grip Discs 2000 Grit, 50 Pack

- Specially treated waterproof paper does not require soaking, is curl resistant and will not deteriorate
- Premium abrasive grain last long and cuts fast
- Ultra flexible backing resists cracking, tearing and wrinkles
- Advanced coating process for a consistent scratch pattern that buffs out faster



3M



MMM2087 3M™ Trizact™ Hookit™ Foam Discs, 3", P3000 Grit 15/Box

- Foam disc used in a spot repair system for removing P1200-P1500 grade sand scratches before using 3M™ Perfect-It™ 3000 Panel Repair System
- Use damp to level minor dust nibs and for light sanding of mismatched orange peel on all automotive paints



SAND PAPER



3M™ Production Paper Sheets Open Coat, 9" x 11" - 5 Per Pack

- Dry sanding only on machine or by hand
- Open coat resists loading
- For shaping and finishing plastic filler and featheredging
- Block or sander



MMM32115 - 80D

MMM32118 - 40D

MMM5002 3M™ Cloth Utility Roll, 1" x 50 Yards

- Used for general purpose metal working
- For light deburring, clean-up, blending and finishing metal surfaces
- Aluminum oxide mineral, glue bond construction on flexible J weight cloth
- ANSI grade: 320



3M™ Three-M-Ite® Cloth Utility Rolls

MMM5005 - ANSI Grade: 220 (1" x 50 yards)

MMM5006 - ANSI Grade: 180 (1" x 50 yards)

MMM5007 - ANSI Grade: 150 (1" x 50 yards)

MMM5008 - ANSI Grade: 120 (1" x 50 yards)

MMM5010 - ANSI Grade: 80 (1" x 50 yards)

MMM5026 - ANSI Grade: 180 (1-1/2" x 50 yards)

MMM5028 - ANSI Grade: 120 (1-1/2" x 50 yards)

MMM5030 - ANSI Grade: 80 (1-1/2" x 50 yards)

3" 3M™ Hookit™ Gold Disc

- For fine featheredging or last final sanding step before priming
- Suggested backup pad 3M™ Hookit™ Disc Pad (MMM05769) with the 3M™ Hookit™ Soft Interface Disc Pad (MMM05771)
- Abrasive mineral type: aluminum oxide



3M™ Hookit™ Gold Disc

MMM914 - FEPA Grade: P320 - 50 discs per box

MMM917 - FEPA Grade: P180 - 50 discs per box

MMM921 - FEPA Grade: P80 - 50 discs per box



Hookit Purple 6" Dust-Free Finishing Film Disc

- Long-lasting abrasive disc produces easy-to-polish finish
- Specially formulated coating reduces pigtails and boosts abrasive life
- Flexible, durable film backing increases conformability
- Several hole designs available for better dust extraction
- Hookit™ attachment system makes for fast, efficient disc change-outs

MMM30770 - P800 Grit

MMM30771 - P600 Grit

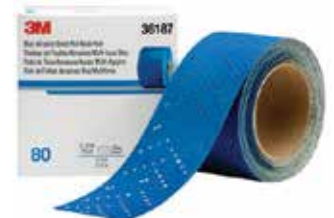
MMM3010 3M™ Emery Cloth Sheets, 9" x 11" - 3 Sheets per Pack

- Designed for rust and corrosion removal or metal sanding
- Cloth backing makes it strong and durable
- Use for deburring and preparing metal surfaces
- Contains one sheet each: fine, medium, coarse



3M™ Hookit™ Blue Abrasive Sheet Rolls

- A best-in-class abrasive sheet roll for the entire repair and paint prep process
- Engineered ceramic mineral blend is balanced for maximum abrasive performance in its class
- Multi-hole pattern delivers excellent dust extraction and reduces loading
- Upgraded resins improve durability and finish



Part #	Grade	Length	Width	Rolls per Case
MMM36187	80	13 Linear Yards	2-3/4"	4
MMM36189	120	13 Linear Yards	2-3/4"	4
MMM36190	150	13 Linear Yards	2-3/4"	4
MMM36191	180	13 Linear Yards	2-3/4"	4
MMM36192	220	13 Linear Yards	2-3/4"	4
MMM36193	240	13 Linear Yards	2-3/4"	4
MMM36195	320	13 Linear Yards	2-3/4"	4
MMM36196	400	13 Linear Yards	2-3/4"	4
MMM36197	500	13 Linear Yards	2-3/4"	4
MMM36198	600	13 Linear Yards	2-3/4"	4

SAND PAPER



3M™ Hookit™ Blue Abrasive Discs

- A best-in-class abrasive for the entire repair and paint prep process
- Engineered ceramic mineral blend is balanced for maximum abrasive performance in its class
- Multi-hole pattern delivers excellent dust extraction and reduces loading
- Anti-loading coating prevents dust and debris from clogging the cutting surface
- Upgraded resins improve durability and finish
- Hookit™ attachment makes changing discs fast and easy



Norton Champagne Magnum PSA

- Premium heat-treated grain
- 30 - 50% faster cut rate
- Designed for fast cutting
- Resists loading
- Premium B-Weight latex paper backing

Part #	Size	Shape	Attachment	Grade	Per Roll
NOR31468	6"	Round	PSA	P800B	100
NOR31469	6"	Round	PSA	P600B	100
NOR31471	6"	Round	PSA	P400B	100
NOR31473	6"	Round	PSA	P320B	100
NOR31476	6"	Round	PSA	P320B	100
NOR31477	6"	Round	PSA	P220B	100
NOR31481	6"	Round	PSA	P80B	100
Part #	Size	Shape	Attachment	Grade	Per Sleeve
NOR31681	2-3/4"	Rectangular	PSA	P400B	45
NOR31683	2-3/4"	Rectangular	PSA	P320B	45
NOR31686	2-3/4"	Rectangular	PSA	P220B	45
NOR31687	2-3/4"	Rectangular	PSA	P180B	45
NOR31691	2-3/4"	Rectangular	PSA	P80B	45

Part #	Size	Shape	Attachment	Grade	Per Box
NOR07770	6"	Round	PSA	P80C	50
NOR07775	6"	Round	PSA	P180B	50
NOR07776	6"	Round	PSA	P220B	50
NOR07781	6"	Round	PSA	P320B	50
NOR07784	6"	Round	PSA	P400B	50
NOR07785	6"	Round	PSA	P500B	50
NOR07786	6"	Round	PSA	P600B	50
NOR07787	6"	Round	PSA	P800B	50

Part #	Size	Grade	Per Box
MMM36142	3"	80	50
MMM36144	3"	120	50
MMM36145	3"	150	50
MMM36146	3"	180	50
MMM36147	3"	220	50
MMM36148	3"	240	50
MMM36151	3"	400	50
MMM36153	3"	600	50
MMM36157	5"	80	50
MMM36159	5"	120	50
MMM36160	5"	150	50
MMM36161	5"	180	50
MMM36162	5"	220	50
MMM36163	5"	240	50
MMM36165	5"	320	50
MMM36166	5"	400	50
MMM36167	5"	500	50
MMM36168	5"	600	50
MMM36169	5"	800	50
MMM36170	6"	40	50
MMM36172	6"	80	50
MMM36174	6"	120	50
MMM36175	6"	150	50
MMM36176	6"	180	50
MMM36177	6"	220	50
MMM36178	6"	240	50
MMM36180	6"	320	50
MMM36181	6"	400	50
MMM36182	6"	500	50
MMM36183	6"	600	50
MMM36184	6"	800	50

SAND PAPER



NOR62328

3" Cloth Quick-Change Disc, 36 Grit - 25 Per Pack

- Double-laminate backing is extremely durable for the toughest applications
- The new ceramic grain self-sharpenes thus cutting cooler and lasting longer than all other grinding discs
- Quick, tool-free disc change to eliminate time wasted and increase production
- Available in 2" and 3" discs for even the hard to reach jobs

NOR62330

3" Cloth Quick-Change Disc, 50 Grit - 25 Per Pack

NOR62320

2" Cloth Quick-Change Disc 50 Grit - 25 Per Pack



MMM33575

3M™ File Belt Sander

- The 3M™ File Belt Sanders allow technicians to access hard-to-reach areas and are great for spot weld removal, deburring, cleaning, and finishing
- Adjustable arm for user comfort and multiple applications
- Powerful .65 horsepower motor is excellent for collision repair applications
- Belt Speed: 4100 SFPM (1250 SMPM)
- Lightweight file belt sander is ideal for cutting and finishing work in body repair
- Designed for use with 3M cubitron II abrasive belts

SANDING BLOCKS/PENS



TADAF44L

6 Piece Dura-Block Sanding Kit

- Includes most of the popular blocks in the Dura-Block line:

- TADAF4400 - Dura-Block Standard Sanding Block
- TADAF4401 - 1/3 Dura-Block 5-1/4" Sanding Block
- TADAF4402 - 2/3 Dura-Block 10-1/2" Sanding Block
- TADAF4403 - Dura-Block 16-1/2" Full Size Sanding Block
- TADAF4404 - Dura-Block 11" Tubular Sanding Block
- TADAF4405 - Dura-Block Scruff Block

Dura-Block Sanding Blocks

- Precision machined surface
- Flexible
- Hard surface tension
- Patented



TADAF44HL

7 Piece Dura-Block Hook and Loop Sanding Blocks

- Hook and Loop allows use of money-saving Hook and Loop Paper
- Known worldwide as the gold standard in blocks
- Product is machined to a perfect, flat finish



Allows for reuse of paper when changing grits. The patented materials used in Dura-Blocks allow them to conform to the panel curve yet the surface hardness prevents digging into fill materials.

Part #	Size	Description	Application
TADAF4400	3/4" x 1 3/8"	Standard Sanding Block	Curved or flat panels
TADAF4401	1-1/2" x 2-5/8" x 5-1/2"	1/3 Dura-Block / 5-1/4" Sanding Block	Slightly curved or flat panels
TADAF4402	1-1/2" x 2-5/8" x 11"	2/3 Dura-Block / 10-1/2" Sanding Block	Small to medium panels
TADAF4403	1-1/2" x 2-5/8" x 16"	Dura-Block 16-1/2" / Full Size Sanding Block	Large flat or slightly curved surfaces
TADAF4404	1-1/4" Diameter x 11"	Dura-Block 11" / Tubular Sanding Block	Hard to sand areas
TADAF4405	5/8" x 2-1/2" x 5-3/8"	Dura-Block Scruff Block	Sanding and prep work
TADAF4406	10-7/8" x 2-1/8"	Dura-Block / Tear Drop Sanding Block	Hard to sand areas
TADAF4409	1-1/2" x 2-5/8" x 24"	Dura-Block / 24" x 2" Sanding Block	Medium to large panels
TADAF4410	1-1/2" x 2-5/8" x 24"	Dura-Block / 30" x 2" Sanding Block	Large panels

SANDING BLOCKS/SPONGES/PENS



MMM5440

3M™ Stikit™ Hand Block - 2-3/4" x 5"

- Made of sturdy, durable, high strength material
- Shaped to fit the hand comfortably
- Embossed rubber face which allows good adhesion for Stikit sheet rolls and Stikit Production Sheets



MMM5441

3M™ Stikit™ Hand Block - 2-3/4" x 7-3/4"

MMM5442

3M™ Stikit™ Hand Block Soft - 2-3/4" x 5"

- Soft molded foam block with easy release hook face

NORTON

Soft PSA Hand Blocks, 2-3/4" x 5"

- Constructed of flexible, yet tough, foam
- The design is good for both flat surfaces as well as contours
- The embossed rubber face allows for good adhesion of PSA sheet rolls



NOR42090 - Soft

NOR42094 - Firm

NOR03728

Dual Density Wet Sanding Block

- Because of the "grabbing" power of these blocks, no adhesive is required, simply wrap the paper around the block
- The dense side is for more aggressive blocking, while the soft side is for color sanding



Soft Touch Sanding Sponge, 4-1/2 x 5-1/2 x 3/16" - 20 Pack

- Durable, abrasive coated foam for lasts up to 5x longer than sandpaper, resistant to tear
- Superior flexibility; for hand-sanding or finishing
- Washable for long life, rinse and reuse



NOR03077 - Ultra Fine

NOR03076 - Super Fine

NOR03075 - Fine Grade



Sanding Block

- Uses standard 3" x 8" sandpaper
- Easy to affix paper to steel spikes molded into block
- Use with wet or dry sandpaper on flat or curved surface

SGT89800 - 5"

SGT89810 - 9"



KT170550

Sanding Pen

- Over 20,000 glass fibers in pen point
- Goes where other tools or sandpaper can't reach
- Includes extra pen point in rear cap
- Hundreds of uses ... home, shop, auto, industry
- No warranty coverage



KT170551 - Sanding Pen Refill 2 Pack

- No warranty coverage

WARNING: Cancer and Reproductive Harm - www.P65Warnings.ca.gov

SCUFF PADS



MMM7447

Maroon Scotch Brite™ Pad

- 9" x 6" in size; 20 pads per box
- For scuffing before applying paint and primer-surfacer
- Made of nylon web
- Rinse clean



MMM7448

Gray Scotch Brite™ Ultra Fine Pad - 9"x 6"

- 20 pads per box
- For final sanding of primer-surfacer
- Made of nylon web
- Rinse clean



NORTON

NOR58000

Scuff & Clean Hand Pad - Maroon

- Quick and aggressive cut
- Advanced resin formulation for a more consistent cut and added strength
- Perforated for quick, easy pad re-sizing without jagged edge



NOR58002

Micro Fine Hand Pads - Grey

- Soft and durable high quality microfiber material
- Gentle and fine fiber will not leave any scratches or marks
- Ideal for cleaning delicate surfaces including glasses, camera lenses, smart phones, tablets, and LCD screens



FLAP WHEELS

3M

3M™ Cubitron™ II Flap Discs (6 per box)

- Cuts 30% faster and lasts 2x longer than other conventional ceramic abrasives for increased productivity and a consistent repair finish
- Runs cooler and requires less pressure than other conventional ceramic abrasives
- Precision Shaped Grain (PSG) technology results in a more uniform finish, less rework, less refining of deep scratches
- Flexible flap construction allows for grinding and blending



Part #	Size	Grade	Per Box
MMM33470	4-1/2" (115mm)	40+	5

Firepower



FPW1423-2151 Flap Wheel, 3" x 1", 60 Grit

- 1" long • 1/4" arbor hole
- 18,000 rpm



FPW1423-2152 Flap Wheel, 3" x 1", 80 Grit

FPW1423-2154 Flap Wheel, 2" x 1" x 1/4", 60 Grit

- Max speed: 20,000 rpm
- Constructed of hundreds of resin bonded cloth abrasive sheets firmly attached to a balanced core
- During use, each flexible sheet adapts quickly to the contours of the workpiece - continuously exposing fresh, sharp grit for extended product life



FPW1423-2155 Flap Wheel, 2" x 1" x 1/4", 80 Grit

- Max speed: 20,000 rpm

FPW1423-2158 Flap Wheel, 1-1/2" x 1/2" x 1/4", 80 Grit

- Max speed: 20,000 rpm

FPW1423-2160 Flap Wheel, 1" x 1" x 1/4", 60 Grit

- Max speed: 25,000 rpm

FPW1423-2161 Flap Wheel 1" x 1" x 1/4", 80 Grit

- Max speed: 25,000 rpm



WARNING: Cancer and Reproductive Harm - www.P65Warnings.ca.gov

GRINDING WHEELS

Firepower



FPW1423-2186 4" x 1/8" x 5/8"

Type 27 Depressed Center Grinding Wheel, 36 Grit, 5 per Pack

- Fully reinforced with resin bonded aluminum oxide to ensure safety at high speed and to increase bonding and impact strength
- Designed for use on air or electric powered right angle or vertical shaft grinders
- Grade A36S • Without hub • Max speed: 13,700 rpm



FPW1423-2188

4-1/2" x 1/4" x 7/8" Type 27 Depressed Center Grinding Wheels, 24 Grit, 5 per Pack

WARNING: Cancer and Reproductive Harm - www.P65Warnings.ca.gov

FPW1423-2310

Type 1 Bench Grinding Wheel, 6" x 3/4", 60 Grit

- Wheels are individually precision balanced, trued and faced for smooth operation
- Each wheel is individually boxed so they stay clean and undamaged until use
- Designed for versatile off-hand grinding in deburring barstock after cutting and touching up, reconditioning and sharpening tools where precision grinding is not required
- Grinding is done on the wheel periphery only
- Aluminum oxide wheel grinds metal of high tensile strength, like steel and steel alloy



FPW1423-2311

Type 1 Bench Grinding Wheel, 6" x 3/4", 36 Grit

FPW1423-2312

Type 1 Bench Grinding Wheel, 6" x 3/4", 80 Grit

WARNING: Cancer and Reproductive Harm - www.P65Warnings.ca.gov

FPW1423-3153

Type 27 Depressed Center Grinding Wheel, 4-1/2" x 1/4" x 7/8", 24 Grit

- Fully reinforced with resin bonded aluminum oxide to ensure safety at high speed and to increase bonding and impact strength
- Designed for use on air or electric powered right angle or vertical shaft grinders
- Without hub
- Max speed: 13,300 rpm



WARNING: Cancer and Reproductive Harm - www.P65Warnings.ca.gov

GRINDING WHEELS



IPA8120

2" 3-in-1 Diamond Grinding Wheel

- Grinds, cuts and under cuts
- Allows access to hard-to-reach areas
- Out performs standard grinding wheels in all ways; maintains diameter, lasts longer and cuts faster with low odor and debris
- For grinding, deburring, surface prepping, cutting sheet metal, fiberglass and more
- 1/4" shank - 30,000 rpm max

IPA8151

3" 3-in-1 Diamond Grinding Wheel

WARNING: Cancer and Reproductive Harm - www.P65Warnings.ca.gov



SRK12734

4-1/2" x 1/4" x 7/8" Depressed Grinding Wheel - 3 Pack

- Vitrified, aluminum oxide double fiberglass reinforced wheels designed for strength and cutting action when working on steel and non-ferrous metals
- Use on angle head grinders • 11,900 RPM
- Complies with ANSI B7.1 regulations when in use

SRK12750

4-1/2" x 1/4" x 5/8" -11 Depressed Grinding Wheel

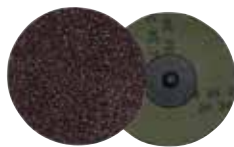
- 11,900 RPM
- Vitrified, reinforced aluminum oxide grinding wheels
- Great for auto body work as well as all types of metal fabrication and steel finishing/removal
- Use on angle head grinders • Built in hub
- Comply with ANSI B7.1 regulations when in use



SRK3350GT

3" Mini Grinding Wheel, 50 Grit - 25 Pack

- Cloth backed aluminum oxide mini grinding discs



SRK3320ZGT

3" Zirconia Mini Grinding Wheel, 24 Grit - 25 Pack



WARNING: Cancer and Reproductive Harm - www.P65Warnings.ca.gov



DWTDW4514

4-1/2" x 1/4" x 7/8"

High Performance Metal Grinding Wheel

- High performance aluminum oxide grain for long life and high material removal
- High grain concentration for aggressive grinding action and smoother running wheels
- Proprietary material mix ensures durable long life wheels
- 3 full sheets of fiberglass for durability and safety
- 4-1/2" diameter; 1/4" thickness; 7/8" arbor size
- A24R grit; max speed: 13,300 rpm; application: metal grinding

DWTDW4419

4" x 1/4" x 5/8" High Performance Metal Grinding Wheel

- 4" diameter; 1/4" thickness; 5/8" arbor size
- A24R grit; max speed: 15,200 rpm; application: metal grinding



SUNEXC606GW6

2" Grinding Wheels for SXC606 (6 Pack)

- 60 grit sanding pads are perfect for general purpose grinding on metal materials
- Fits most comparable models • Max speed: 15,000 rpm
- Use with SXC606 2" angle grinder and right angle cut off tools

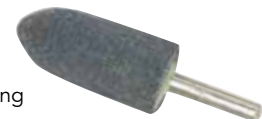
GRINDING BURRS



FPW1423-2202

Mounting Point, 7/8" x 2-3/4" x 1/4"

- Maximum performance for grinding of ferrous and non-ferrous metals
- For use with horizontal or straight shaft, die and pencil grinders on jobs where larger cones and plugs won't fit
- Excellent for medium to heavy duty applications in metal fabrication, foundries, steel mills
- Ideal for rapid stock removal on high alloy steel, castings and special steel • Max speed: 19,000 rpm



WARNING: Cancer and Reproductive Harm - www.P65Warnings.ca.gov

GRINDING BURRS



IRT1818TIN
**6 Piece 1/8" Shank,
 1/8" Head, Carbide Burr Kit**

- Titanium Nitride coated
- 1/8" shank
- 1/8" head size with various shapes
- Maximum operating speed of 40,000 RPM
- Convenient softsided case included

Ingersoll Rand carbide burrs are Titanium Nitride (TiN) coated to provide maximum edge retention and corrosion resistance. The TiN coating can improve the average lifetime of the burr by more than three times.

Kit includes: 1 cylindrical, 1 ball nosed cylindrical, 1 ball nosed tree, 1 ball nosed cone, 1 pointed tree and 1 ball style burr.

IRT1814TIN
6 Piece 1/8" Shank, 1/4" Head, Carbide Burr Kit

Kit includes: 1 cylindrical, 2 ball nosed cylindrical, 1 ball nosed tree, 1 pointed tree and 1 ball style burr.



AST2181
8 Piece Double Cut Carbide Burr Set

- Should not exceed maximum 30,000 rpm
- All burrs are 1/4" shank, USA standard
- Blow molded storage case for easy storage and transport

Set includes:

- SA-5: Cylindrical shape 1/2" x 1"
- SA-3: Cylindrical shape 3/8" x 3/4"
- SC-3: Cylindrical radius end 3/8" x 3/4"
- SC-1: Cylindrical radius end 1/4" x 5/8"
- SD-1: Ball shape 1/4"
- SD-3: Ball shape 3/8"
- SF-3: Tree shaped radius end 3/8" x 3/4"
- SF-5: Tree shaped radius end 1/2" x 1"

WARNING: Cancer and Reproductive Harm - www.P65Warnings.ca.gov



AST2181B
8 Piece Double Cut Carbide Burr Set w/Die Grinder

- 202 - composite body 1/4" medium die grinder - 22,000 rpm - rear exhaust
- Rear exhaust air flow system directs air away from work surface
- 2181- 8 piece double cut carbide rotary burr set
- 1/4" shank in blow molded case

The Astro 2181B kit includes the Astro 202 die grinder and the Astro 2181B rotary burr set.

WARNING: Cancer and Reproductive Harm - www.P65Warnings.ca.gov



AST2185
5 Piece
4.5" Long Double Cut Carbide Burr Set

- 1/4" Shank
- Composed of Tungsten Carbide
- Extra-long 4.5" in length for hard to reach areas
- Should not exceed a maximum of 20,000 RPM
- Set includes SA-5: Cylindrical Shape 1/2" x 1"; SC-3: Cylindrical Radius End 3/8" x 3/4"; SD-3: Ball Shape 3/8"; SF-3: Tree Shaped Radius End 3/8" x 3/4"; SF-5: Tree Shaped Radius End 1/2" x 1"

WARNING: Cancer and Reproductive Harm - www.P65Warnings.ca.gov

CUT-OFF WHEELS



Cut-off Wheels

- 25,000 RPM rating



WARNING: Cancer and Reproductive Harm - www.P65Warnings.ca.gov

Part #	Size	Quantity
MTN4601-5	3" x 1/16" x 3/8"	5
MTN4601-100	3" x 1/16" x 3/8"	100
MTN4602-5	3" x 1/32" x 3/8"	5
MTN4602-100	3" x 1/32" x 3/8"	100



KT171300

Cut-Off Discs 3" x 1/16", 50 Per Pack

- Abrasive cut-off discs • 3/8" arbor
- Lifetime warranty against breakage



KT171301

Cut-Off Discs 3" x 1/16", 25 Per Pack

- Lifetime warranty against breakage

KT171303

3" X 1/32" Cut-Off Wheel, 6 Per Pack

- High quality abrasive wheels with 3/8" arbor hole
- For cutting mufflers, light metals, fiberglass and more
- Lifetime warranty against breakage



KT171306

3" X 1/16" Cut-Off Wheel, 6 Per Pack

- Lifetime warranty against breakage

WARNING: Cancer and Reproductive Harm - www.P65Warnings.ca.gov



NOR89030

3" x 1/16" x 3/8"

Medallion Cut-Off Wheels, 5 Pack

- Medallion cut-off blades deliver premium, unmatched performance on the job
- Fiberglass reinforced with a special resinoid bond
- Medallion blade technology can operate at a higher speed than conventional blades, even in excess of 25,000 rpm



MMM1987

3M™ General Purpose Cut-Off Wheel, 3" x 1/32" x 3/8", 50 Per Pack

- Used for cutting autobody sheet metal, frame rails, exhaust pipes, clamps and rusted bolts
- For use on utility type cut-off tools



MMM1988

3M™ General Purpose Cut-Off Wheel, 3" x 1/16" x 3/8", 50 Per Pack



MMM1989

3M™ Green Corps™ Cut-Off Wheel, 3" x 1/32" x 3/8", 5 Per Pack

- Ceramic abrasive grain provides high cut rates and long life on almost all materials including fiberglass, stainless steel and mild steel
- Lasts up to 8 times longer than conventional aluminum oxide products
- The combination of high speed rating and 3M™ ceramic abrasive grain content means a cool, sharp, quick cut with minimum product wear
- Specifically designed for use with 20,000 rpm cut-off wheel tool applications



MMM1990

3M™ Green Corps™ Cut-Off Wheel, 3" x 1/16" x 3/8" - 5 Pack



MMM1991

3M™ Green Corps™ 3" x 3/16" x 3/8" Reinforced Weld Grinding Wheels, 5-pack

- Abrasive mineral type: aluminum oxide
- Best in class construction

NOTE: Read all warnings supplied with wheels. Do not use on tool without guards.



MMM33460

3" 3M™ Cubitron™ II Cut-Off Wheel (6 per box)

- Cubitron™ II cuts 30% faster and lasts 2x longer than conventional ceramic abrasives
- Precision Shaped Grain (PSG) technology employs microreplication for extremely uniform abrasive
- Triangular PSG abrasive grains are super-sharp and cut exceptionally fast
- Grains are electrostatically oriented on abrasive surface for efficient cut, even wear

ABRASIVES | grinding

CUT-OFF WHEELS

3M



3M™ Cut-Off Wheel Tools for Body Repair

- Lightweight, powerful tool design delivers 20,000 RPM and power for cutting through metals including high strength steel
- Optimizes performance of 3M™ Cubitron™ II Cut-Off Wheels
- Lightweight for maneuverability and reduced operator fatigue
- Composite housing is tough and lightweight

MMM33579 - 3"

AP Astro



ASTCW3-100 Cut-Off Wheel-100 Pack

- 3" diameter
- 1/16" thick
- 3/8" arbor
- Comes in plastic bin



WARNING: Cancer and Reproductive Harm - www.P65Warnings.ca.gov

TOOL AID

SGT94860

3" x 1/16" x 3/8" Cutoff Wheels, 5 Per Pack

- Abrasive reinforced wheels are ideal for automotive and autobody repair
- Cut all ferrous materials with ease
- Cut through clamps, hangers, sheet metal, angle iron, tubing, castings, mufflers and rusted bolts

WARNING: Cancer and Reproductive Harm - www.P65Warnings.ca.gov



SHARK



Aluminum Oxide Cut-Off Wheels - 10 Packs

- Resin bonded, reinforced cut-off wheel for steel cutting on many applications
- For use on die grinders
- Comply with ANSI B7.1 regulations



Part #	Size	Grit	RPM Max
SRK12700	3" x 1/32" x 3/8"	60	25,000
SRK12704	3" x 1/16" x 3/8"	54	25,000
SRK12710	4" x 1/32" x 3/8"	60	21,000
SRK12712	4" x 1/16" x 3/8"	54	21,000

LENOX

LENOX Metal Max Diamond Cutoff Wheels

Part #	Diameter	Thickness	Arbor Size	Optional Arbor Adjustment	Tool Type	RPM Max
LEX1972914	1.5"	.050"	3/8"	1/4"	Die Grinder	40,200
LEX1972917	2"	.050"	3/8"	1/4"	Die Grinder	30,500
LEX1972918	3"	.050"	3/8"	1/4"	Die Grinder	20,300
LEX1972919	4"	.050"	3/8"	1/4"	Die Grinder	15,200
LEX1972920	4"	.050"	5/8"		Angle Grinder	15,200
LEX1972921	4.5"	.050"	7/8"		Angle Grinder	13,300
LEX1972922	5"	.050"	7/8"		Angle Grinder	12,200
LEX1972923	6"	.050"	7/8"	Diamond Knock Out	Angle Grinder / Circular Saw	10,100
LEX1972929	14"	.130"	1"		Chop Saw	4,300
LEX1972930	12"	.150"	1"	20mm	Chop Saw	6,200



CUT-OFF WHEELS



FPW1423-3145

WARNING: Cancer and Reproductive Harm - www.P65Warnings.ca.gov

4" x 1/16" x 3/8" Cut-Off Abrasive Wheels, Type 1 (For Metal)

- Firepower Double Reinforced Cut-Off Wheels are designed for heavy duty cut-off jobs using circular saws, chop-saws and straight grinding machines
- They ensure optimum effectiveness for dry applications on a broad range of ferrous and non-ferrous metals, soft ceramics, masonry materials, reinforced plastic and fiberglass
- Most Firepower cut-off wheels are double reinforced with two layers of fiberglass

Part #	Size	Max. RPM	Grade	Quantity
FPW1423-3147	4" x 1/16" x 5/8"	25,000	A46T2FG	1
FPW1423-3148	4-1/2" x 1/16"	13,300	A46T2FG	1
FPW1423-3150	4" x 1/32" x 3/8"	18,000	A60T2FG	1
FPW1423-3155	3" x 1/16" x 3/8"	25,000	A46T2FG	5
FPW1423-3157	4" x 1/16" x 5/8"	25,000	A46T2FG	5
FPW1423-3182	4" x 1/32" x 3/8"	18,000	A60T2FG	5
FPW1423-3184	4-1/2" x 1/16" x 7/8"	13,000	A46T2FG	5
FPW1423-3185	4-1/2" x 1/8" x 7/8"	13,300	A46T2FG	1
FPW1423-3188	6" x .045" x 7/8"	10,200	A60T2FG	1



MAKB-10849-5

14" Cut-Off Wheel - 5 Per Pack

- 14" x 1/8" thick, 1" arbor cut-off wheel
- A36P B.F. premium • Aluminum oxide
- Cuts ferrous metals, steel, angle iron, brass, bronze, carbon steel, and other metals



FPW1423-3143

Type 1 Cut-Off Abrasive Wheel, 3" x 1/16" x 3/8"

- Firepower double reinforced cut-off wheels are designed for heavy duty cut-off jobs
- Max speed: 25,000 rpm • Grade: A46T2FG

WARNING: Cancer and Reproductive Harm - www.P65Warnings.ca.gov



TMRCW1-50

Aluminum Oxide Cut Off Wheel 3" x 1/16", AH 3/8" (50/Box)

CUT-OFF WHEEL ACCESSORIES



SGT94950

Arbor for Cut-Off Wheels with 1/4" and 3/8" Center Holes

- Allows any die grinder or drill to be turned into a cut-off tool using either 1/4" or 3/8" I.D. cut-off wheels

WARNING: Cancer and Reproductive Harm - www.P65Warnings.ca.gov



WARNING: Cancer and Reproductive Harm - www.P65Warnings.ca.gov

KT170013

Cut-Off Wheel Arbor

- Drill adapter for cut-off discs
- Fits any drill 1/4" capacity or larger
- Lifetime warranty



BRUSHES

Wire / Scratch Brushes



KTI74103

3 Piece Brush Set - 7"

- Contains one each of the most popular brushes: brass, nylon and stainless steel
- Molded polypropylene handles

KTI74106 - Brass **KTI74107** - Nylon
KTI74108 - Stainless Steel

WARNING: Cancer and Reproductive Harm - www.P65Warnings.ca.gov



SGT17170

7" Easy Grip Brush Set

- Contains one each of the most popular brushes: brass, nylon and stainless steel
- Molded Polypropylene handles for easy gripping
- Narrow head fits into hard to clean areas
- For use with cleaning solvents, thinners and chemicals

WARNING: Cancer and Reproductive Harm - www.P65Warnings.ca.gov



KDT2309

Stainless Steel Brush with 7" Handle

- Brush has hand-tied stainless steel tufts for cleaning corrosion from parts without scratching
- Brush size: 3/8 x 1-3/8"

KDT2310

Curved Handle Wire Scratch Brush

- Clean carbon, dirt and paint from metal and other surfaces with this wooden-handled brush
- Overall length: approximately 14"
- Bristle area: 3 x 19 rows, 1-1/8", trim and 6" long

KDT2311

10" Shoe Handle Wire Scratch Brush

- Use this hardwood-handled brush to clean dirt, carbon and rust from metal and other surfaces
- Bristle area: 4 x 16 rows and 1-1/8" trim



Toothbrush Style Hand Scratch Brush

- Staple set in poly handle
- 7-1/4" OAL handle

BRM93AP - .006 Stainless steel fill
BRM93APB - .006 Brass fill
BRM93APN - .012 Nylon fill

BRM93AW

Toothbrush Style Hand Scratch Brush - Wood Handle

- .006 Stainless steel fill

WARNING: Cancer and Reproductive Harm - www.P65Warnings.ca.gov



LIS14160

5-1/2" Scratch Brush

- Overall area 14" in length
- Made with .020" industrial heat tempered wire
- 20,000 rpm maximum safe free speed
- Cleans dirt and carbon from metal surfaces

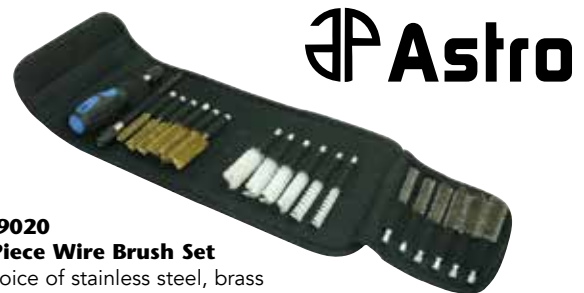
WARNING: Cancer and Reproductive Harm - www.P65Warnings.ca.gov

LIS14180

Shoe Handle Wire Scratch Brush

- Removes rust, scale, paint and solder from metal surfaces; also great for cleaning threads and files
- Brush has 4-1/2" of densely packed wire bristles and a hardwood handle
- Overall length 9-3/4"

WARNING: Cancer and Reproductive Harm - www.P65Warnings.ca.gov



AST9020

20 Piece Wire Brush Set

- Choice of stainless steel, brass and nylon brushes
- Suitable for polishing and cleaning areas of autos, machines, etc.
- Set includes extension adapter for use with power tools
- Set includes (1) brush each in stainless steel, brass, and nylon in the following sizes: 1/4", 3/8", 1/2", 5/8", 3/4", and 1". All brushes have a 1/4" hex shaped quick disconnect shank.

WARNING: Cancer and Reproductive Harm - www.P65Warnings.ca.gov

BRUSHES

Parts Brushes



KDT242

Parts Cleaning Brush with Polypropylene Bristles

- Brush removes grease and dirt from automotive parts
- Strong handle with durable polypropylene bristles will hold up under repeated use in cleaning solvents
- Caution: Wear eye protection



LIS14000

Parts Cleaning Brush with Polypropylene Bristles

- Removes dirt and grease from motors, machinery and metal parts
- Polypropylene bristles hold up under repeated use in cleaning solvents



WARNING: Cancer and Reproductive Harm - www.P65Warnings.ca.gov

Utility Brushes



Utility Brushes

- Wood handle brushes have natural bristles not affected by thinners or other solvents

Sold separately:

- KT174005** - 1/2" width
- KT174010** - 1" width
- KT174015** - 1-1/2" width
- KT174020** - 2" width
- KT174025** - 2-1/2" width
- KT174030** - 3" width



WARNING: Cancer and Reproductive Harm - www.P65Warnings.ca.gov



WARNING: Cancer and Reproductive Harm - www.P65Warnings.ca.gov

All Purpose Economy Brushes

- Made from pure hogs hair bristles held to a natural hardwood handle by a plated steel ferrule
- Brushes are unaffected by chemicals, grease, oils and thinners found in garages and body shops
- Excellent for application of compound, glues, fiberglass, undercoating, grease, oil, paint and paint removers

- SGT17310** - 1" width
- SGT17320** - 1-1/2" width
- SGT17330** - 2" width
- SGT17340** - 2-1/2" width
- SGT17350** - 3" width
- SGT17360** - 4" width



Specialty Brushes



6 Piece Bore Brush Set

- Durable brass abrasive bore brushes
- 1/4" Hex shank
- Use on ports, tubes, bearings and other common wire brush applications
- Do not exceed 600 rpm

(Brass set shown)

Includes sizes: 8mm, 10mm, 12mm, 15mm, 17mm and 19mm. This set features the most common sizes for cleaning tubes, ports, bearings and other general wire brush applications. Twisted wire gives it extra strength to increase cleaning action. Each brush is fitted with a 1/4" hex shaft for use with a standard 1/4" driver. These brushes are meant for push and pull use. NEVER TURN COUNTER CLOCKWISE.

IPA008081 - Brass

IPA8080 - Stainless Steel

WARNING: Cancer and Reproductive Harm - www.P65Warnings.ca.gov



IPA8088

Brass Micro Brush Set

- For tubes, bores and valve guides
- 9" length for hard-to-reach applications
- 8-piece set of small-diameter brushes for general shop use
- Durable twisted wire for increased
- Extra-large finger loop for increased control

WARNING: Cancer and Reproductive Harm - www.P65Warnings.ca.gov



AST4546

6" Nylon Bed Brush

- Constructed of non-oxidizing materials which will not react with metal
- Design helps prevent clogging and loading
- Non-sparking material creates a safer brush than conventional wire brushes
- Lasts up to 6 times longer than conventional wire brushes under normal circumstances
- Unit has standard 5/8" thread and a maximum of 6,500 rpm

WARNING: Cancer and Reproductive Harm - www.P65Warnings.ca.gov

WIRE BRUSHES/WHEELS

Wire End Brushes

Part #	Manufacturer	Size	Style
FPW1423-2104	Firepower	3/4"	Crimped
FPW1423-2105	Firepower	3/4"	Knotted
KTI79210	K Tool International	1"	Crimped
KDT2312	GearWrench	1"	Knotted
LIS14040	Lisle	1"	Knotted
LIS14060	Lisle	1"	Crimped



KTI79210



LIS14040



FPW1423-2104

Wire Cup Brushes

Part #	Manufacturer	Size	Style
FPW1423-2106	Firepower	1-1/2"	Crimped
KTI79215	K Tool International	2"	Crimped
FPW1423-2107	Firepower	2-1/2"	Crimped
FPW1423-2108	Firepower	2-1/2"	Crimped
KDT2314	GearWrench	2-1/2"	Crimped
LIS14020	Lisle	2-1/2"	Crimped
KTI79220	K Tool International	2-3/4"	Knotted
KTI79216	K Tool International	3"	Crimped
KTI79225	K Tool International	3"	Crimped
FPW1423-2109	Firepower	3"	Crimped
FPW1423-2110	Firepower	3"	Knotted
FPW1423-2115	Firepower	4"	Knotted
FPW1423-3158	Firepower	4"	Crimped



KTI79220



FPW1423-2106

Wire Wheels

Part #	Manufacturer	Size	Style
FPW1423-2100	Firepower	1-1/2"	Circular
FPW1423-2101	Firepower	2"	Circular
SGT17220	S & G Tool Aid	2"	Encapsulated
KTI79217	K Tool International	3"	Crimped
FPW1423-2102	Firepower	3"	Circular
FPW1423-2103	Firepower	3"	Circular
KTI79200	K Tool International	6"	Crimped
KTI79201	K Tool International	6"	Crimped
FPW1423-2121	Firepower	6"	Crimped
FPW1423-2122	Firepower	6"	Crimped
KTI79205	K Tool International	8"	Crimped
FPW1423-2123	Firepower	8"	Crimped



KTI79201

WARNING: Cancer and Reproductive Harm - www.P65Warnings.ca.gov