

IRWIN[®]

TOOLS



HANSON 75-Piece Mach / Fractional / Metric Plug Tap and 1" Hex Die Set
HAN1813816



HANSON 116-Piece Mach / Fractional / Metric Plug Tap and 1" Hex Die Set
HAN1813817



76-Piece Machine Screw / Fractional / Metric Tap & Hex Die Set HAN26376



117-Piece Machine Screw / Fractional / Metric Tap & Hex Die and Drill Bit Deluxe Set HAN26377



**29-Piece Turbomax
Metal Index Drill Bit
Set** HAN3018006B

**29-Piece Cobalt M-42
Metal Index Drill Bit
Set** HAN3018002B

CUTTING | threading Index:

Combination Drill Bit Sets 224-225

Drill Bits and Sets:

High Speed Steel 226-228
High Speed Steel - Reduced Shank 229
High Speed Steel - Left Handed 230

Black Oxide 231
Black & Gold 231
Cobalt 232
Titanium 232-233
Carbide Tipped 233
Silver and Deming Reduced Shank 233
Double Ended 233
Unibit/Step Drill Bits 234-235

Drill Chucks & Keys 235

Drill Bit Sharpeners 236

Nut Crackers 236

Extractor Sets:

Screw Extractors 237-238
Bolt Extractors 238-240
Stud Extractors 240

Stamp Sets 240

Scribes/Awls 240

Thread Repair Tools 241-244

Utility Knives 245

Scrapers 246-247

Razor Blades 247

Hack Saws, Tin Snips 248

Reciprocating Saw Blades 248-250

Hole Saws/Cutters 250

Spotweld Tools 251-253

Tap and Die Sets:

SAE/Metric Sets 253-254
Metric Sets 255-256
Fractional Sets 256-257
Tap Sockets 257
Open Stock Sets 258-260

Drill/Tap Guides 261

Tube and Pipe Cutters/Benders 262

Bolt and Cable Cutters 262-263

Tin Snips 263

COMBINATION DRILL BIT SETS

**IRWIN®
HANSON®**

HAN11119 10-Piece Spiral Extractor and Drill Bit Set in Metal Index

- Designed to remove broken studs, bolts, socket screws and fittings
- Aggressive left hand spiral design for extra gripping power
- Spiral flutes are designed to embed themselves deeper into the metal as you turn the tool, so as the fastener resistance increases, the extractor's grip increases
- Extractor size and recommended drill bit size are etched on each tool

Set includes sizes: Ex-1, Ex-2, Ex-3, Ex-4, Ex-5, and drill bits in sizes: 5/64", 7/64", 5/32", 1/4" and 19/64".



HAN11135 35-Piece Screw Extractor and Drill Bit Set

- Set includes spiral flute screw extractors in sizes: EX-1, EX-2, EX-3, EX-4, EX-5, EX-6; multi spline extractors in sizes: 1/8", 5/32", 3/16", 7/32", 1/4", 9/32", 5/16", 11/32", 3/8", 13/32", 7/16", 15/32", 1/2" and drill bits in sizes: 5/64", 7/64", 1/8", 5/32", 3/16", 7/32", 1/4", 9/32", 19/64", 5/16", 11/32", 3/8", 13/32", 7/16", 15/32", 1/2".



HAN11117 10 Piece Spiral Extractor and Drill Bit Combo Pack

- Extractor size and recommended drill bit size are etched on each tool
- Set includes sizes: EX-1, EX-2, EX-3, EX-4, EX-5 and drill bits in sizes 5/64, 7/64, 5/32, 1/4 and 19/64



HAN3101010 48 Piece Master Extraction Set

- 6 spiral flute extractors - for use on common fasteners where lower torque is adequate
- 13 multi-spline extractors - for use when higher torque or a lower profile tool is needed
- 13 bolt extractors - for use when part of the fastener is exposed
- 16 left-hand Cobalt drill bits - use these to drill out the interior of the fastener; they often extract the fastener by themselves



**IRWIN®
HANSON®**

IRWIWAFM1319 19-Piece Impact Drill/Drive Set

- Won't strip, and they're manufactured with heavy-duty, cold-forged, high-grade steel, so they'll withstand extremely high torque output
- Impact rated, 3x the life
- Black oxide finish resists corrosion
- 1/4" quick change hex shank
- 1/4", 5/16", 3/8" magnetic nutsetters
- 1/16"-1/4" quick change shank drill bits
- #1, #2, and #3 square and Phillips insert bits



IRWIWAFM1333 33-Piece Impact Drill/Drive Set

- Impact rated
- 1/4" quick change hex shank
- 3x the life
- 1/4" quick change hex shank on 1/16"-1/4" drill bits
- #1, #2, and #3 square, Phillips insert bits and T10-30 torx insert bits



HAN1840319 32-Piece Impact Drill/Drive Set

- Impact rated
- 1/4" quick change hex shank
- 3x the life
- 1/16" - 1/4" quick change hex shank drill bits plus #2 Phillips bits
- 1/4" quick change bit holder



IRW4935643 12 Piece Black Oxide Hex Shank Drill Bit Set

- 135 Degree split point
- 1/4" quick change shank
- 2 piece construction
- Black oxide
- Works in impact drivers



COMBINATION DRILL BIT SETS

IRWIN[®]
HANSON[®]



HAN90108

Drill Bit Set, 8 Piece, High Speed Steel, 1/2" Reduced Shank, 9/16" to 1", in Metal Index

- 8-piece 1/2" reduced shank silver & deming high speed steel drill bit set
- Constructed of M-7 high speed steel for high resistance to abrasion
- Three flattened shank design provides better chuck grip while reducing slippage
- Ideal for use in keyless chucks
- Standard 118 degree point for use in wood, metal and plastic

Milwaukee[®]



MLW48-32-4016

22-Piece Automotive Shockwave Impact Driver Bit Set

- Optimized shock zone geometry absorbs peak torque and prevents breaking
- Custom machined tip prevents stripping and reduces wobble
- Custom alloy 76 steel maximizes resistance to wear and shock
- Includes (22) Pieces
- (2) Magnetic Nut Drivers, (2) Socket Adapters, (5) Phillips Bits, (13) Torx Bits



MLW48-32-4017

Milwaukee[®] Shockwave 56-Piece Impact Duty Drill and Drive Bit Set

- The optimized Shock Zone geometry is unique for each tip type to provide up to 30X longer life and absorbs 3X more torque
- Custom machined tip prevents stripping and reduces wobble
- Custom alloy 76 steel maximizes resistance to wear and shock
- Can be used in impact drivers or drill drivers

Set includes: (3) Magnetic Bit Holders (3) Magnetic Nut Drivers (5) Hex Drill Bits (3) Socket Adapters (9) Phillips Bits (16) Torx Bits (9) Fractional Hex Bits (8) Metric Hex Bits.

KTOOL[®]
INTERNATIONAL



KT110330

326-Piece Master Drill Bit Set

- Comprehensive set of drill bits and accessories
- Unique storage case fully opens to access bits and accessories
- Two (2) bottom trays fold and slide into portable carrying case
- Transport from job to job quickly and easily

Qty: Description:

- | | |
|----|----------------------------------------------------------------------------------------------------------------------------------------------------------------------------------------------------------------------------------------------------------------------------------|
| 64 | HSS Twist Drill Bits: 3/64" (8), 1/16" (8), 5/64" (5), 3/32" (5), 7/64" (5), 1/8" (5), 9/64" (5), 5/32" (5), 3/16" (4), 7/32" (4), 15/64" (4), 1/4" (4), 17/64" (4), 9/32" (4), 5/16" (4), 11/32" (4), 3/8" (4), 7/16" (4), 15/32" (4) and 1/2" (4) |
| 54 | Titanium Coated High Speed Drill Bits: 3/64" (6), 1/16" (6), 5/64" (4), 3/32" (4), 7/64" (4), 1/8" (4), 9/64" (4), 5/32" (4), 11/64" (4), 3/16" (2), 7/32" (2), 15/64" (4), 1/4" (4), 17/64" (4), 9/32" (4), 5/16" (4), 11/32" (4), 3/8" (4), 7/16" (4), 15/32" (4) and 1/2" (4) |
| 10 | Nutdrivers: 5/32" (2), 3/16" (2), 7/32" (2), 1/4" (2), 9/32" (2), 5/16" (2), 11/32" (2), 3/8" (2), 7/16" (2) and 1/2" (2) |
| 37 | 2" Screwdriver Bits: 7 Slotted, 6 Phillips, 6 Pozi, 8 Star, 7 Metric Hex and 8 Square |
| 64 | 1" Screwdriver Bits: 14 Slotted, 10 Phillips, 10 Pozi, 8 Star, 7 Hex, 9 Metric Hex and Square |
| 3 | 14" Masonry Drill Bits: 5/16", 3/8" and 1/2" |
| 21 | Masonry Drill Bits: 5/32" (2), 11/64" (2), 3/16" (2), 7/32" (2), 15/64" (2), 1/4" (2), 17/64" (2), 9/32" (2), 5/16" (2), 11/32" (2), 3/8" (2), 7/16" (2), 15/32" (2) and 1/2" (2) |
| 4 | Nail Pouch: 1/32", 1/16", 3/32" and 1/8" |
| 6 | Drill Stoppers: 1/8", 5/32", 3/16", 1/4", 5/16" and 3/8" |
| 1 | Allen Key: 2.5mm |
| 1 | Magnetic Holder |
| 1 | Counter Sink |
| 1 | Gauge |
| 4 | Hole Saws: 1-3/4", 2-1/8", 2-3/8" and 2-1/2" |
| 1 | Hole Saw Adapter |
| 44 | Wood Boring Drill Bits: 1/8" (3), 5/32" (4), 11/64" (8), 3/16" (4), 13/64" (4), 7/32" (4), 15/64" (4), 1/4" (4), 17/64" (4), 9/32" (4), 5/16" (4), 11/32" (4), 3/8" (4), 7/16" (4), 15/32" (4) and 1/2" (4) |
| 5 | Flat Wood Bits: 1/2", 5/8", 3/4", 7/8" and 1-1/4" |
| 4 | 12" Flat Wood Bits: 5/16", 3/8", 1/2" and 9/16" |

WARNING: Cancer and Reproductive Harm - www.P65Warnings.ca.gov

DRILL BITS AND SETS

High Speed Steel

IRWIN®
HANSON®



HAN73136
13-Piece SAE Turbomax®
High Speed Steel Drill Bit Set

- Revolutionary tip design stays sharper longer and drills up to 28% faster than other leading drill bits
- Three flatted shank design provides better chuck grip and reduces slippage; ideal for use in keyless chucks
- Bit is constructed of M-2 high speed steel for the best combination of strength, heat resistance, and wear resistance
- Comes in a metal index case

Set includes sizes: 1/16" through 1/4" in 1/64" increments.



HAN73149
21-Piece Turbomax®
High Speed Steel Fractional Drill Bit Set

- Revolutionary tip design stays sharper longer and drills up to 28% faster than other leading drill bits
- Three flatted shank design provides better chuck grip and reduces slippage; ideal for use in keyless chucks
- Bit is constructed of M-2 high speed steel
- Comes in a metal index case

Set includes sizes: 1/16" through 3/8" in 1/64" increments.



HAN80181
60 Piece High Speed Steel Wire Gauge
Straight Shank Jobber Length Drill Bit Set

- Drills exact hole size; ideal for tapping
- Bits are constructed of M-2 high speed steel for best combination of strength, heat resistance, and wear resistance
- Standard 118 degree point for use in wood, metal and plastic
- Lifetime warranty does not cover abuse

IRWIN®
HANSON®



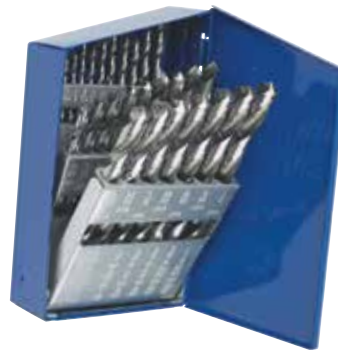
HAN3018006B
29-Piece Turbomax Metal Index Drill Bit Set

- Oxide treatment resists corrosion, helps prevent bit from rusting
- 135° split point tip starts on contact, cuts with less force
- Reduced shank above 3/8" allows the use of larger drill bits in a 3/8" chuck

Automatic indexing for easy bit access and identification.

Removable cartridges: easy to carry bits from case to worksite.

Set contains the following drill bit sizes: 1/16", 5/64", 3/32", 7/64", 1/8", 9/64", 5/32", 11/64", 3/16", 13/64", 7/32", 15/16", 1/4", 17/64", 9/32", 19/64", 5/16", 21/64", 11/32", 23/64", 3/8", 25/64", 13/32", 27/64", 7/16", 29/64", 15/32", 31/64", 1/2"



HAN60138
29-Piece High Speed Steel Drill Bit Set

- Bits are constructed of M-2 high speed steel for the best combination of strength, heat resistance, and wear resistance
- Standard 118° point for use in wood, metal, and plastic
- Includes a metal case

Set includes sizes: 1/16" through 1/2" in 1/64" increments.

HANSON BY IRWIN - COBALT
JOBBER LENGTH OPEN STOCK DRILL BITS

Part #	Size	Material	Pkg
HAN63120	5/16"	Cobalt	Bulk
HAN63121	21/64"	Cobalt	Bulk
HAN63124	3/8"	Cobalt	Bulk
HAN63132	1/2"	Cobalt	Bulk

DRILL BITS AND SETS

High Speed Steel

IRWIN®
HANSON®



HANSON BY IRWIN HIGH SPEED STEEL OPEN STOCK DRILL BITS

Part #	Size	Style	Package
HAN73306	3/32"	Hanson Turbomax®	1 per card
HAN73307	7/64"	Hanson Turbomax®	1 per card
HAN73308	1/8"	Hanson Turbomax®	1 per card
HAN73309	9/64"	Hanson Turbomax®	1 per card
HAN73310	5/32"	Hanson Turbomax®	1 per card
HAN73312	3/16"	Hanson Turbomax®	1 per card
HAN73313	13/64"	Hanson Turbomax®	1 per card
HAN73314	7/32"	Hanson Turbomax®	1 per card
HAN73315	15/64"	Hanson Turbomax®	1 per card
HAN73316	1/4"	Hanson Turbomax®	1 per card
HAN73317	17/64"	Hanson Turbomax®	1 per card
HAN73318	9/32"	Hanson Turbomax®	1 per card
HAN73319	19/64"	Hanson Turbomax®	1 per card
HAN73320	5/16"	Hanson Turbomax®	1 per card
HAN73321	21/64"	Hanson Turbomax®	1 per card
HAN73322	11/32"	Hanson Turbomax®	1 per card
HAN73323	23/64"	Hanson Turbomax®	1 per card
HAN73324	3/8"	Hanson Turbomax®	1 per card
HAN73325	25/64"	Hanson Turbomax®	1 per card
HAN73326	13/32"	Hanson Turbomax®	1 per card
HAN73429	29/64"	Hanson Turbomax®	Bulk - min. 6
HAN73431	31/64"	Hanson Turbomax®	Bulk - min. 6
HAN73332	1/2"	Hanson Turbomax®	1 per card
HAN73117	17/64"	Hanson Turbomax®	Bulk - min. 6
HAN73118	9/32"	Hanson Turbomax®	Bulk - min. 6
HAN73119	19/64"	Hanson Turbomax®	Bulk - min. 6
HAN73120	5/16"	Hanson Turbomax®	Bulk - min. 6
HAN73122	11/32"	Hanson Turbomax®	Bulk - min. 6
HAN73124	3/8"	Hanson Turbomax®	Bulk - min. 6
HAN73318	9/32"	Hanson Turbomax®	1 per card

HANSON BY IRWIN HIGH SPEED STEEL OPEN STOCK DRILL BITS

Part #	Size	Style	Package
HAN60124	3/8"	General Purpose	Bulk
HAN60508	1/8"	General Purpose	1 per card
HAN60510	5/32"	General Purpose	1 per card
HAN60512	3/16"	General Purpose	1 per card
HAN60515	15/64"	General Purpose	1 per card
HAN60516	1/4"	General Purpose	1 per card
HAN60517	17/64"	General Purpose	1 per card
HAN60520	5/16"	General Purpose	1 per card
HAN60521	21/64"	General Purpose	1 per card
HAN60524	3/8"	General Purpose	1 per card
HAN60532	1/2"	General Purpose	1 per card
HAN73832	3/8"	General Purpose	1 per card



KNK29KK5

KnKut 29 Piece Jobber Length Drill Bit Set 1/16"-1/2" by 64ths

- No center punch or pilot hole required
- Rounder, more accurate holes
- Faster penetration
- Drills tough alloys
- Reduces user fatigue

KnKut Performance Drill Bits are engineered with an exclusive combination of premium steel, superior geometry, and a nitride treatment. KnKut Performance Drill Bits reduce drilling cycles and maximizes the number of holes per drill. KnKut Drill Bits are manufactured from a high grade M-7 Molybdenum High Speed Steel (HSS), that has a high Vanadium content. Sizes include: 1/16" thru 1/2" by 64ths - The ultimate in performance!

DRILL BITS AND SETS

High Speed Steel



KNK13KK5

13-Piece Jobber Length

Drill Bit Set 1/16"-1/4" by 64ths

- No center punch or pilot hole required
- Rounder, more accurate holes
- Faster penetration - reduces user fatigue
- Added strength against breakage
- Manufactured from a high grade M-7 Molybdenum High Speed Steel (HSS), that has a high Vanadium content

KNK21KK5

21 Piece Jobber Length

Drill Bit Set 1/16"-3/8" by 64ths

KNK15KK5

KnKut 15 Piece Jobber Length

Drill Bit Set 1/16"-1/2" by 32nds



KNK29KK5DB

29-Piece Drill Buddy

Jobber Length Drill Bit Set 1/16"-1/2" by 64ths

- Waterproof, great for outdoor worksites
- No center punch or pilot hole required
- Rounder, more accurate holes
- Manufactured from premium high speed steel
- KnKut Drill Bit Buddy puts 29 drills in easy hands reach, eliminating wasted time from retrieving and searching for the right drill

KNK29KK38DB

29-Piece Drill Buddy Jobber Length

Drill Bit Set with 3/8" Reduced Shank

- No center punch or pilot hole needed
- Featuring 3/8" reduced shanks
- 135 degree split point design will not walk
- 6 month warranty on material and workmanship



KNKUT HIGH SPEED STEEL OPEN STOCK DRILL BITS

Part #	Size	Pkg Qty
KNKKK5-1/16	1/16"	1
KNKKK5-5/64	5/64"	1
KNKKK5-3/32	3/32"	1
KNKKK5-7/64	7/64"	1
KNKKK5-1/8	1/8"	1
KNKKK5-9/64	9/64"	1
KNKKK5-5/32	5/32"	1
KNKKK5-11/64	11/64"	1
KNKKK5-3/16	3/16"	1
KNKKK5-13/64	13/64"	1
KNKKK5-7/32	7/32"	1
KNKKK5-15/64	15/64"	1
KNKKK5-1/4	1/4"	1
KNKKK5-17/64	17/64"	1
KNKKK5-9/32	9/32"	1
KNKKK5-19/64	19/64"	1
KNKKK5-5/16	5/16"	1
KNKKK5-21/64	21/64"	1
KNKKK5-11/32	11/32"	1
KNKKK5-3/8	3/8"	1
KNKKK5-25/64	25/64"	1
KNKKK5-13/32	13/32"	1
KNKKK5-7/16	7/16"	1
KNKKK5-29/64	29/64"	1
KNKKK5-15/32	15/32"	1
KNKKK5-31/64	31/64"	1
KNKKK5-1/2	1/2"	1

DRILL BITS AND SETS

High Speed Steel - Reduced Shank

HANSON BY IRWIN REDUCED SHANK OPEN STOCK DRILL BITS

Part #	Size	Style	Pkg
HAN73625	25/64"	Turbomax®	Carded
HAN73627	27/64"	Turbomax®	Carded
HAN73628	7/16"	Turbomax®	Carded
HAN73629	29/64"	Turbomax®	Carded
HAN73630	15/32"	Turbomax®	Carded
HAN73632	1/2"	Turbomax®	Carded

Part #	Size	Style	Pkg
HAN73832	1/2"	General Purpose	Carded

Part #	Size	Style	Pkg
HAN3016226	13/32"	Cobalt High Speed Steel	Carded
HAN3016229	29/64"	Cobalt High Speed Steel	Carded
HAN3016231	31/64"	Cobalt High Speed Steel	Carded

Part #	Size	Style	Pkg
HAN3019132B	1/2"	Black and Gold HSS	Bulk

Part #	Size	Style	Pkg
HAN91133	33/64"	Silver and Deming HSS	Carded
HAN91136	9/16"	Silver and Deming HSS	Carded
HAN91137	37/64"	Silver and Deming HSS	Carded
HAN91142	21/32"	Silver and Deming HSS	Carded
HAN91144	11/16"	Silver and Deming HSS	Carded
HAN91152	13/16"	Silver and Deming HSS	Carded
HAN91164	1"	Silver and Deming HSS	Carded
HAN90172	1-1/8"	Silver and Deming HSS	Carded

IRWIN®
HANSON®



HAN3018011 29 Piece Drill Bit Tin Turbo Speedbor Index Case

- High performance metal drilling for portable drill users, works well on curved surfaces
- Self-centering tip for clean entry and fast starts; stays sharp longer
- 1/16" through 1/2" by 64ths with 3/8" reduced shank
- Three flatted shank on 3/16" and above for better chuck grip



HAN60148 29 Piece 3/8" Reduced Shank High Speed Steel Drill Bit Set

- Bit is constructed of M-2 high speed steel
- Standard 118 degree point for use in wood, metal and plastic
- 3/8" reduced shank fits all 3/8" drills
- Set includes sizes: 1/16" through 1/2" in 1/64" increments

DRILL BITS AND SETS

High Speed Steel - Left Handed

IRWIN®
HANSON®



HAN30520
5-Piece Cobalt Left Hand Mechanic's Length High Speed Steel Drill Bit Set

- Constructed of M-42 8% cobalt high speed steel for super abrasive resistance in tough metals
- Heavy duty spiral flute design produces faster chip ejection
- Shorter cutting tip reduces torque for drilling in high tensile strength materials
- 135° split point reduces feed pressure for easier penetration without work hardening
- Ideal for use with screw extractors

Sizes: 5/64", 7/64", 5/32", 1/4" and 19/64".

HANSON BY IRWIN - COBALT
LEFT HANDED OPEN STOCK DRILL BITS

Part #	Size	Material	Min Qty
HAN30505ZR	5/64"	Cobalt	6
HAN30507	7/64"	Cobalt	6
HAN30508	1/8"	Cobalt	6
HAN30510	5/32"	Cobalt	6
HAN30512ZR	3/16"	Cobalt	6
HAN30514	7/32"	Cobalt	6
HAN30516	1/4"	Cobalt	6
HAN30518ZR	9/32"	Cobalt	6
HAN30519	19/64"	Cobalt	6
HAN30524	3/8"	Cobalt	6
HAN30526ZR	13/32"	Cobalt	6

IRWIN®
HANSON®

HANSON BY IRWIN - BLACK OXIDE
LEFT HANDED OPEN STOCK DRILL BITS

Part #	Size	Material	Min Qty
HAN62309ZR	9/64"	Black Oxide	12
HAN62326	13/32"	Black Oxide	6
HAN62329	29/64"	Black Oxide	6
HAN62332	1/2"	Black Oxide	6

KNKUT



KNK5KK6

5-Piece Left Hand Drill Bit Set (Jobber Length)

- Set Includes: 1/8", 5/32", 3/16", 7/32", 1/4"

KNKUT LEFT HANDED
OPEN STOCK DRILL BITS

Part #	Size	Material	Min Qty
KNKKK6-15/64	15/64"	High Speed Steel	1
KNKKK6-17/64	17/64"	High Speed Steel	1
KNKKK6-9/32	9/32"	High Speed Steel	1
KNKKK6-21/64	21/64"	High Speed Steel	1
KNKKK6-23/64	23/64"	High Speed Steel	1
KNKKK6-25/64	25/64"	High Speed Steel	1
KNKKK6-13/32	13/32"	High Speed Steel	1
KNKKK6-27/64	27/64"	High Speed Steel	1
KNKKK6-7/16	7/16"	High Speed Steel	1
KNKKK6-29/64	29/64"	High Speed Steel	1
KNKKK6-15/32	15/32"	High Speed Steel	1
KNKKK6-31/64	31/64"	High Speed Steel	1
KNKKK6-1/2	1/2"	High Speed Steel	1

DRILL BITS AND SETS

Black Oxide

**IRWIN®
HANSON®**



- HAN3018004**
29-Piece Black Oxide Metal Index Drill Bit Set
- 135° split point tip
 - Contains 1/16" - 1/2" by 64ths

HAN67507 - 7/64"
HAN67510 - 5/32"
HAN67516 - 1/4"

Milwaukee®



- MLW48-89-2801**
21 Piece Thunderbolt® Black Oxide Drill Bit Set
- Thunderbolt® Web, provides longer life and faster driller times
 - Parabolic flute, clears chips faster
 - 135° degree split point, precision start no walking
 - 3-flat secure grip shank, reduces bit slipping in chuck
 - Sizes include: (2) 1/16", (2) 5/64", 3/32", 7/64", (2) 1/8", 9/64", 5/32", 11/64", (2) 3/16", 13/64", 7/32", 15/64", (2) 1/4", 5/16", 3/8", 1/2"

Milwaukee®



- MLW48-89-2802**
Milwaukee® Thunderbolt Black Oxide Jobber Length 29-Piece Drill Bits in Case
- Thunderbolt® Web, provides longer life and faster driller times
 - Parabolic flute, clears chips faster
 - 135° degree split point, precision start no walking
 - 3-flat secure grip shank, reduces bit slipping in chuck
 - Sizes: 1/16" thru 1/2" by 64ths

Milwaukee® Thunderbolt® Black Oxide Jobber length drill bits are designed for extreme durability and long life. The Thunderbolt® web features a thicker core than a standard drill bit, which provides ultimate strength and protects against side-load breakage. A specially designed parabolic flute form clears chips and debris fast to keep the bit cool. A precision start, 135 Split Point tip starts on contact to keep the bit from walking for fast accurate holes. Excellent for drilling on curved surfaces, requires less effort to drill and is highly recommended for use with portable drills. The 3-Flat Secure-Grip shank won't slip in the drill chuck. Reduced shank diameter for use in 3/8" chucks.

Black & Gold

**IRWIN®
HANSON®**



- HAN3018005**
29-Piece Black and Gold Metal Index Drill Bit Set
- Contains 1/16" - 1/2" by 64ths
 - 135° split point tip

DRILL BITS AND SETS

Cobalt

**IRWIN®
HANSON®**

29-Piece Cobalt Drill Bit Sets

- 135° split point tip
- Contains 1/16" - 1/2" by 64ths

Part #	Metal Index
HAN3018002	M-35
HAN3018002B	M-42



HANSON BY IRWIN COBALT OPEN STOCK DRILL BITS

Part #	Size	Package
HAN3016007	7/64"	Carded
HAN3016008	1/8"	Carded
HAN3016010	5/32"	Carded
HAN3016012	3/16"	Carded
HAN3016013	13/64"	Carded
HAN3016014	7/32"	Carded
HAN3016016	1/4"	Carded
HAN3016017	17/64"	Carded
HAN3016018	9/32"	Carded
HAN3016020	5/16"	Carded
HAN3016021	21/64"	Carded
HAN3016022	11/32"	Carded
HAN3016024	3/8"	Carded
HAN3016028	7/16"	Carded
HAN3016032	1/2"	Carded
HAN3016131	31/64"	Carded
HAN3016132	1/2"	Carded

Milwaukee®

MLW48-89-2332

Milwaukee® 29-Piece Cobalt Red Helix Drill Bit Set

- Up to 10X Life vs. Black Oxide
- RED HELIX Design for Rapid Chip Removal
- 135° split point for precision start no walking
- CHIP BREAKER Decreased Heat Buildup
- Secure Grip Prevents bit from slipping in chuck



Milwaukee Cobalt RED HELIX Drill Bits are engineered for extreme durability and long life in hard metal applications. Designed with a Variable Helix that includes an aggressive 35° Helix Angle which ends at 15°, the Cobalt bits with RED HELIX provide Rapid Chip Removal limiting heat buildup to Stay Sharper Longer. Black Oxide Drill Bits but can be used in all twist drilling applications.

Titanium

**IRWIN®
HANSON®**

HAN3018003

29-Piece Titanium Metal Index Drill Bit Set

- Titanium Nitride coating extends cutting edge life up to 6 times
- 135° split point starts on contact, cuts with less force
- Reduced shank above 3/8" allows the use of larger drill bits in a 3/8" chuck
- Rubber overmolded case protects kit if dropped
- Tap and die selection chart for convenient reference
- Contains the following drill bit sizes: 1/16" - 1/2" by 64ths



HANSON BY IRWIN TITANIUM OPEN STOCK DRILL BITS

Part #	Size	Package
HAN63915	15/64"	Carded
HAN63918	9/32"	Carded
HAN63928	7/16"	Carded
HAN63930	15/32"	Carded

Milwaukee®



MLW48-89-4630

Milwaukee® 15-Piece SHOCKWAVE Titanium Shockwave Drill Bit Set

- Titanium Coating for Up to 3X Life vs. Black Oxide
- SHOCKWAVE Impact Duty, Engineered for Drills and Impacts
- RED HELIX Design for Rapid Chip Removal
- CHIP BREAKER Decreased Heat Buildup
- 135° split point for precision start no walking

Milwaukee SHOCKWAVE Impact Duty Titanium Drill Bits with RED HELIX are engineered for impacts and drills. Designed with a Variable Helix with an aggressive 35° Helix Angle which ends at 15°, the Impact Duty Titanium Drill bits with RED HELIX provide Rapid Chip Removal to limit heat buildup to Stay Sharper Longer. The 135° split point tip delivers a precision start and prevents walking for fast, accurate holes. Titanium coating can be used in all drilling applications to give you up to 3X life vs. Black Oxide Drill Bits.

DRILL BITS AND SETS

Titanium



WARNING: Cancer and Reproductive Harm - www.P65Warnings.ca.gov



MTNDBS29PC

29-Piece Titanium Drill Bit Set

- Sizes range from 1/16" to 1/2" x 64ths
- Titanium Nitride coating increases life and performance
- Includes heavy duty steel case
- Bits can be re-sharpened
- Drill bit set fits all 3/8" drills



MLW48-89-4633

Titanium Shockwave 1/4" Hex Drill Bit Set 10 PC

- Titanium coating for up to 3X life vs. black oxide
- Impact duty, engineered for drills and impacts
- Design for rapid chip removal
- Decreased heat buildup
- 135° split point for precision start and no walking

Carbide Tipped



KNK5KK9

5 Piece Carbide Tipped Hard Steel Drill Bit Set

- Carbide tipped and made for use in drilling hardened steel in the range of 48 to 65 Rockwell "C"
- Holes may be drilled without annealing or appreciably changing the structure of the material

Sizes include: 1/8", 3/16", 1/4", 5/16" x 4", 3/8" x 4".

Silver and Deming High Speed Steel Reduced Shank

**IRWIN®
HANSON®**



HAN91140

Silver and Deming High Speed Steel Fractional 1/4" Reduced Shank Drill Bit - 5/8"

- Bit is constructed of M-7 high speed steel for high resistance to abrasion during tough drilling applications
- Three flatted shank design provides better chuck grip and reduces slippage; ideal for use in keyless chucks
- All Silver and Deming bits are 6" long and feature a 1/2" reduces shank that fits all 1/2" drills
- Standard 118 degree point for use in wood, metal and plastic

Double Ended

**IRWIN®
HANSON®**



Double End High Speed Steel Fractional Drill Bit

- Black oxide finish for corrosion resistance
- Bit is constructed of M-2 high speed steel for best combination of strength, heat resistance, and wear-resistance
- For general use in wood, metal, and plastic
- Ideal for use in stationary drills
- 135° split point ensures a true start and eliminates bit walking
- Overall length: 2"

HAN60608 - 1/8"

HAN60612 - 3/16"

HAN60616 - 1/4"



KTI71200

Double Ended Drill Bits, 10 per Pack

- Double-ended, 2" long bits are made of high-speed steel
- Ideal for auto body work and sheet metal drilling

WARNING: Cancer and Reproductive Harm - www.P65Warnings.ca.gov



DRILL BITS AND SETS

Unibit/Step Drill Bits

IRWIN
Unibit

VGP10228

4-Piece Unibit Step Drill Set

- Single flute cutting edge for greater control through steps
- 3 flattened shank prevents slipping in drill chuck
- Non-skid self starting to eliminate skidding and the need for center punching
- Set includes (2) VGPUN1, (1) VGPUN3 and (1) VGPUN1T



VGP502T

3-Piece Titanium Coated Unibit Set

- Single flute cutting edge for greater control through steps
- 3 flattened shank
- Non-skid self starting to eliminate skidding and the need for center punching
- Set includes VGPUN1T, VGPUN2T and VGPUN3T



VGP10502CB

3 Piece Cobalt Unibit Step Drill Set

- M35 grade Cobalt high speed steel
- Radial concave flute
- 3 flattened shank • Speedpoint™ tip



Set includes VGP10231 (1/8" - 1/2" - 13 steps), VGP10232 (3/16" - 1/2" - 6 steps), and VGP10233 (1/4" - 3/4" - 9 steps). All with laser marked sizes.



VGPUNS

#5 High Speed Steel Fractional Self Starting Unibit Drill Bit

- Single flute cutting edge for greater control through steps
- Hex shank prevents slipping in drill chuck
- New SpeedPoint tip penetrates faster than previous Unibits and prevents walking
- Ideal for drilling holes into thin materials such as stainless steel, copper, brass, aluminum, plastic and laminates
- Hole size: 1/4" - 1-3/8"; number of holes: 10 steps

Milwaukee



MLW48-89-9221

Milwaukee #1

Step Drill Bit 1/8" - 1/2"

- JAM-FREE Performance: Dual-flute design provides greater speed and control
- Up to 2X faster: Optimized for cordless drills in high speed
- Rapid Strike™ Tip: Creates fast, accurate starts and generates less heat
- Up to 4X longer bit life: Optimized geometry with Black Oxide coating to cut faster and produce less heat
- Laser-engraved reference marks: Easily stop on any hole size
- Includes bits #1 (48-89-9201), #2 (48-89-9202), and #4 (48-89-9204) in a sturdy storage case

K TOOL
INTERNATIONAL



KTI71233

3-Piece Set Step Drill Bits

- Titanium coated
- High-speed steel (HSS) 4241
- HRC 60-63 (Rockwell Scale)
- Sizes: 1/8" to 1/2", 3/16" to 1/2" & 1/4" to 3/4"
- 1 Year Warranty

WARNING: Cancer and Reproductive Harm - www.P65Warnings.ca.gov

TITAN



TIT16503

3 Piece Step Drill Set

- High speed steel with titanium finish
- Drill multiple sizes with each bit
- 28 hole sizes in 3 bits

Bit one: 13 sizes from 1/8" to 1/2"; Bit two: 6 sizes from 3/16" to 1/2"; Bit three: 9 sizes from 1/4" to 3/4".

DRILL BITS AND SETS

Unibit/Step Drill Bits



AST9456

Stepped Installation & Removal Bit

- Designed to drill holes for and remove up to 30 different rivet nuts sizes and brands
- For all sizes of rivet nuts from 6-32 & M3 to 1/2-13 & M12

WARNING: Cancer and Reproductive Harm - www.P65Warnings.ca.gov



UNIBIT/STEP DRILL BITS OPEN STOCK

Size	Part #
1/8" - 1/2"	VGPUN1 VGPUN1T KTI71235 TIT16501 KNKKK4-1/8-1/2 MLW48-89-9201
3/16" - 1/2"	VGPUN2 KNKKK4-3/16-A
9/16" - 1"	VGPUN20
1/4" - 3/4"	VGPUN3 VGPUN3T KTI71237 TIT16504 KNKKK4-1/4-3/4 MLW48-89-9203
3/16" - 7/8"	VGPUN4 VGPUN4T MLW48-89-9204
1/2"	VGPUN10

WARNING: Cancer and Reproductive Harm - www.P65Warnings.ca.gov

DRILL CHUCKS & KEYS



Multiple Chuck Key

- Allows you to open over 200 different chucks
- The squared center of the keys opens acetylene tanks

STOST12 - Black Steel 3/8" - 3/4"

STOST13 - Black Steel 1/4" - 3/8"



DRILL CHUCKS & KEYS



KDT30248

1/4" Adapt-A-Drive® Chuck and Key

- This chuck converts any cordless screwdriver into a multipurpose mini drill in a snap
- Adapt-A-Drive® is great for light drilling operations, starter holes and hard-to-reach spaces



KDT30247

Jacobs 3/8" Multi-Craft Chuck and Key

KDT30598

Jacobs 1/2" Multi-Craft Chuck and Key



MTN74112 - 1/2" Keyless Chuck (Jacobs)

MTN74138 - 3/8" Keyless Chuck (Jacobs)

WARNING: Cancer and Reproductive Harm - www.P65Warnings.ca.gov



KTI84290

Drill Chuck with Key 3/8"

- Drill chuck and key, 3/8", with 3/8"-24 spindle thread

WARNING: Cancer and Reproductive Harm - www.P65Warnings.ca.gov



DRILL BIT SHARPENERS

Drill Doctor
The Drill Bit Sharpener



DAR750X DD750X Drill Bit Sharpener

- One chuck - sharpens all sizes 3/32" - 3/4"
- New push to stop splitting port - will not allow you to over split the bit point
- Adjustable material take-off - allows user to change the amount of bit material to extend the life of your bits
- User replaceable sharpening wheel - no tool needed
- Cast aluminum point angle shuttle - added durability

DARDA70100PF Large Bit Chuck for 750X

DARDA31320GF Standard Diamond Sharpening Wheel

- Standard grit
- For use with Drill Doctor Sharpeners

DARDA02105PF Left Hand Chuck

- For use with Drill Doctor 750X, 500X and 350X Sharpeners



DAR500X DD500X Drill Bit Sharpener

- Sharpens 3/32" - 1/2" drill bits: high-speed steel, Carbide, Cobalt, TiN-coated and masonry bits
- 1-piece alignment system improves precision, and adjustability
- Longer jaws hold bit more precisely and jaw guides eliminate jaw twisting on small bits
- Cast aluminum point angle shuttle for added durability
- User-replaceable diamond sharpening wheel design for simple replacement - "no tool needed"



DAR350X DD350X Drill Bit Sharpener

- On Chuck Alignment - eliminates alignment port for simplified sharpening process
- V-Block Chuck Jaws - eliminate jaw twisting on small bits
- New ergonomic low profile design - increased stability and less tool walking
- New permanent magnet motor - produces consistent power, regardless of speed or load
- Sharpens 3/32" to 1/2" - wide variety of bits including high-speed steel, carbide, TiN-coated and masonry bits



NUT CRACKERS

IRWIN
HANSON.



HAN394100 7 Piece Power Grip™ Nut Buster Set

- Designed for use with power tools
- 1/4" hex shank fits most power tools
- Reverse spiral flutes are designed to bite down to provide maximum gripping power
- High carbon steel ensures longer life and greater durability
- Universal lobular design fits all types of fasteners
- Lifetime warranty does not cover abuse
- Includes: 1/4 drive size: 8mm, 10mm, 11mm, 3/16, 1/4, 5/16, 3/8, 7/16 and 1/2.

K TOOL
INTERNATIONAL



KT107015 Universal (Medium Duty) Nut Splitter

- Rugged drop forged frame
- Splits rusted or frozen nuts 1/8" to 15/16" across flats
- Parallel action of pusher cracks nuts on one side without damage to bolt threads
- Compound angle design with 360 degree rotating cutter allows use in difficult to reach locations

Cutters never touch the bolt. A few turns of power screw with a 3/4" hand wrench cuts nut for easy removal. Rugged drop forged frame. Length: 6-1/4".

WARNING: Cancer and Reproductive Harm - www.P65Warnings.ca.gov

EXTRACTOR SETS

Screw Extractors

**IRWIN®
HANSON®**



Multi Spline Extractor Sets

- Low profile enables use in confined areas
- Provides most torque of internal extractors
- Engages fastener without a deep hole
- Includes plastic case



Part #	Description
HAN53226	10 Piece Hex Head Multi-Spline Extractor Set - Includes sizes 1/8" through 13/32"
HAN53227	25 Piece Hex Head Multi-Spline Extractor Set - Includes sizes 1/8" through 7/8"
HAN53228	15 Piece Hex Head Multi-Spline Extractor Set - Includes sizes 1/8" through 9/16"

Spiral Flute Extractor Sets

- Spiral flutes are designed to embed themselves deeper into the metal as you turn the tool, so as the fastener resistance increases, the extractor's grip increases



Part #	Description
HAN53535	5 Piece Spiral Flute Extractor Set - Includes sizes EX-1 through EX-5
HAN53545	6 Piece Spiral Flute Extractor Set - Includes sizes EX-1 through EX-6
HAN53406	Spiral Flute Extractor - EX-6

Straight Flute Extractor Sets

- Extracts without expanding material
- Ideal for pipes and fittings
- Works on left-hand or right-hand threads



Part #	Description
HAN53635	5 Piece Straight Flute Extractor Set - Includes sizes ST-1" through ST-5
HAN53645	6 Piece Straight Flute Extractor Set - Includes sizes ST-1" through ST-6
HAN53605	Straight Flute Extractor - ST-5
HAN53606	Straight Flute Extractor - ST-6

**IRWIN®
HANSON®**



HAN1876224

Impact Screw Extractor, 3-Piece Set

- Manufactured with M2 HSS and extra hardened for maximum durability and long life with impact drivers
- Tip of drill end is designed to start fast with minimal walking
- Tip of extractor is serrated for increased torque to remove even the toughest bolts and screws



WARNING: Cancer and Reproductive Harm - www.P65Warnings.ca.gov

KT170040

5-Piece Spiral Screw Extractor Set

- Made of high carbon steel
- Aggressive spiral design for extra grip on stubborn broken bolts
- Lifetime warranty



Sizes include: 1/8" - 1/4", 1 - 6mm; 1/4" - 5/16", 6 - 8mm; 5/16" - 7/16", 8 - 11mm; 7/16" - 9/16", 11 - 14mm; 9/16" - 3/4", 14 - 18mm.

KT170045

5 Piece Fluted Extractor Set

- Straight Flute Screw Extractor Set, for 1/8" to 3/8"
- Fasteners, high carbon steel
- Lifetime warranty



WARNING: Cancer and Reproductive Harm - www.P65Warnings.ca.gov



KNP9R4719003

5-Piece Rennsteig Double Edge Screw Extractor Set

- Set contains individual sizes #1 - #5
- Non slip, double edge engagement
- Large hex-head surface provides an outstanding grip
- Can be used on both right and left handed threads
- Manufactured in Germany by Rennsteig, a division of Knipex



EXTRACTOR SETS

Screw Extractors

GW GEARWRENCH™



KDT720

5 Piece Screw Extractor Set

- Features undercut flutes for more positive grip
- Each extractor has the size stamped on it
- Heat treated for traditional strength
- Tempered tapping ends prevents chipping
- Made in the USA



OTC



OTC4651

Screw Extractor Set

- Removes broken studs and bolts
- Includes ten guide bushings, five drill bits and five screw extractors with extractor nuts
- Drill bits are left handed to help removal

MAYHEW™
Since 1956
The Pros Know



MAY37345

MayheW™ 10-Piece Screw and Pipe Extractor Set

- Removes broken screws, bolt, and studs pipes
- Removes pipes
- Extractors designed to cover a range of 1/4" to 1- 1/2"
- Storage case included

The MayheW Pro master set of screw and pipe extractors includes:

- (1) 6961 Screw Extractor D 1/8" S 1/4"-5/16"
- (1) 6962 Screw Extractor D 3/16" S 3/8"
- (1) 6963 Screw Extractor D 15/64" S 7/16"
- (1) 6964 Screw Extractor D 5/16" S 1/2-9/16"
- (1) 6965 Screw Extractor D 3/8" S 5/8"
- (1) 6966 Screw Extractor D 15/32" S 3/4"
- (1) 6967 Screw Extractor D 9/16" D 7/8"
- (1) 6968 Screw Extractor 21/32" S 1-1/8"
- (1) 6969 Screw Extractor D 13/16" S 1-3/8"
- (1) Screw Extractor 1-1/16"

Bolt Extractors

IRWIN®
HANSON®



HAN54113

13-Piece Professional's Industrial Bolt Extractor Set

- When you are faced with a rounded off, rusted tight or painted over bolt, bolt extractors will break it free
- Reverse spiral fluted are designed to bite down to provide maximum gripping power
- High carbon steel ensures longer life and greater durability
- Universal lobular design fits all types of fasteners
- 3/8" square drive

Set includes bolt extractors to remove bolt sizes: 8mm, 10mm, 11mm, 12mm, 3mm, 14mm, 16mm, 17mm, 19mm, 1/4", 5/16", 3/8", 7/16", 1/2", 9/16", 5/8", 11/16", 3/4".



HAN54009

9 Piece Fractional Bolt Extractor Set

- Reverse spiral flutes are designed to bite down to provide maximum gripping power
- High carbon steel ensures longer life and greater durability
- Universal lobular design fits all types of fasteners
- Lifetime warranty does not cover abuse
- Set includes sizes: 1/4, 5/16, 3/8, 7/16, 1/2, 9/16, 5/8, 11/16, 3/4



HAN54019

9 Piece Metric Bolt Extractor Set

- Set includes sizes: 8mm, 10mm, 11mm, 12mm, 13mm, 14mm, 16mm, 17mm, 19mm



HAN54125

5-Piece Specialty Lugnut Removal Set

- Reverse spiral flutes designed to bite down to provide maximum gripping power
- High carbon steel ensures longer life
- Universal lobular design fits all types of fasteners



Set includes bolt extractors to remove bolt sizes: 19mm, 21mm, 22mm, 24mm, 3/4", 13/16", 7/8", 15/16" and 1".

EXTRACTOR SETS

Bolt Extractors

**IRWIN®
HANSON®**



HAN1859153

14-Piece Impact Deep Well Bolt-Grip® Drawer Set

- Grips and removes damaged nuts, bolts, and screws
- Engineered with reverse spiral flutes
- Extended reach to fit over exposed studs and easily grip and remove fastener
- Sizes include: 1/4" - 3/4"

HAN1859150

8-Piece Impact Bolt Grip Drawer Set

- Compact flat design for drawers and tool cabinets
- Molded resin case holds up to rigors of daily use
- Includes sizes 1/4" to 1/2"
- Includes 1/4" to 3/8" adapter



HAN3094001

5-Piece Bolt-Grip® Deep Well Bolt Extractor Set

- When you are faced with a rounded-off, rusted-tight or painted-over bolt, bolt extractors will break it free
- Reverse spiral flutes are designed to bite down to provide maximum gripping power
- High carbon steel ensures longer life and greater durability
- Universal lobular design fits all types of fasteners



HAN394001

5-Piece BOLT-GRIP™ Bolt Extractor Base Set

- Reverse spiral flutes are designed to bite down to provide maximum gripping power
- High carbon steel ensures longer life and greater durability
- Universal lobular design fits all types of fasteners
- When you are faced with a rounded off rusted tight or painted over bolt, bolt extractors will break it free



Set includes bolt extractors to remove bolts sizes: 11mm, 14mm, 16mm, 3/8", 7/16", 1/2", 9/16", 5/8" in drive size 3/8".

**IRWIN®
HANSON®**



HAN394002

5-Piece BOLT-GRIP™ Bolt Extractor Expansion Set

- Reverse spiral flutes are designed to bite down to provide maximum gripping power
- High carbon steel ensures longer life and greater durability
- Universal lobular design fits all types of fasteners
- When you are faced with a rounded off, rusted-tight or painted over bolt, bolt extractors will break it free
- Sizes: 8mm, 10mm, 13mm, 19mm, 5/16", 11/16", 3/4" in drive size 3/8" in a plastic case.



HAN1859143

6-Piece Impact Bolt Grip Set

- Grips and removes damaged nuts, bolts, and screws
- Includes sizes 1/4"/6mm, 5/16"/8mm, 7/16"/11mm, and 1/2"
- 3/8" square drive
- Impact rated
- 1/4" hex adapter



HAN1859146

6-Piece Impact Bolt Grip Lug Nut Set

- Features Impact Deep Well Extractor
- Reverse Spiral fluted engineered to provide maximum gripping power to easily remove, broken, damaged, or rusted, nuts, bolts and screws
- Includes 1/4" to 3/8" adapter
- Includes sizes from 3/4" to 1"



BOLT EXTRACTORS

- High carbon steel ensures longer life and greater durability
- Universal lobular design fits all types of fasteners
- Lifetime warranty does not cover abuse



Part #	Description
HAN53902	3/8" Drive Bolt Extractor - Removes 5/16" or 8mm
HAN53904	3/8" Drive Bolt Extractor - Removes 10mm
HAN53906	3/8" Drive Bolt Extractor - Removes 12mm
HAN53909	3/8" Drive Bolt Extractor - Removes 9/16" or 14mm
HAN53915	1/2" Drive Bolt Extractor - Removes 13/16" or 21mm
HAN53916	1/2" Drive Bolt Extractor - Removes 7/8" or 22mm
HAN53917	1/2" Drive Bolt Extractor - Removes 15/16" or 24mm

EXTRACTOR SETS

Bolt Extractors



LTILT1350 Lug Ripper

- Easily drill out stripped/broken lug nuts in minutes
- Tungsten steel drill bit with 4 carbide cutters for speed and durability
- Carbide cutters can cut 4" of steel 200 times
- Locking collar clamp secures drill guide to lug nut



Stud Extractors



KTI23800 4-Piece 1/2" Drive Fractional Stud Remover Set

- Made of chrome vanadium
- Heat treated for wear and resistance
- Reaches studs in difficult work areas
- Components available individually



This 4 piece set includes the following sizes: 1/4", 5/16", 3/8" and 7/16". All packaged in a blow molded case.

WARNING: Cancer and Reproductive Harm - www.P65Warnings.ca.gov

KTI23900 4-Piece 1/2" Drive Metric Stud Remover Set

This 4 piece set includes sizes 6mm, 8mm, 10mm, and 12mm. All packaged in a blow molded case.

WARNING: Cancer and Reproductive Harm - www.P65Warnings.ca.gov



MAY29895 Mayhew™ Stud Extractor for 3/8 in. Impact Wrench

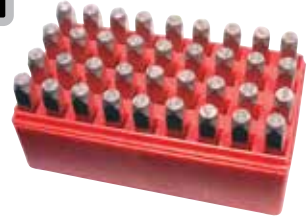
- This stud extractor is used for removing threaded, stripped, rusted, broken and smooth studs
- Fits a 3/8" impact wrench
- Fits studs from 1/4" to 1/2"
- American made product



STAMP SETS



WARNING: Cancer and Reproductive Harm - www.P65Warnings.ca.gov



KT173400 Letters and Numbers Metal Stamp with Case

- Combination set includes 3/16" set of numbers and 3/16" set of letters
- Includes convenient storage case

SCRIBES/AWLS



WARNING: Cancer and Reproductive Harm - www.P65Warnings.ca.gov



LIS31800 Scriber with 90° Hook

- Comes with straight and 90° points to mark in even the tightest places
- Heat-treated carbon steel points provide durability
- Knurled aluminum handle provides a sure grip



KDT2979 8" Scriber with 90° Hook

- Sharp, tempered point scribes metal
- Hooked end removes O-rings, seals and gaskets



KTI70010 Tapered Scratch Awl

- High quality chrome vanadium steel
- Used for scribing, punching holes and lining up panels or holes

WARNING: Cancer and Reproductive Harm - www.P65Warnings.ca.gov

THREAD REPAIR TOOLS

HeliCoil



Part #	Description
HEL5621	Master Inch Coarse Thread Repair Kit - Includes 5 sizes
HEL5625	Master Inch Fine Thread Repair Kit - Includes 6 sizes
HEL5626-150	Master Metric Coarse Thread Repair Kit - Includes 4 sizes
HEL5626-125	Master Metric Fine Thread Repair Kit - Includes 4 sizes

HEL4833

Oxygen Sensor Thread Repair Kit

Contains:

- (1) pilot reamer tap, (1) install tool, (6) M18 x 1.5 inserts
- Molded case



INCH COARSE THREAD REPAIR KITS

Part #	Qty	# of Inserts	Size
HEL5521-1	1	12	12-24
HEL5521-2	1	12	8-32
HEL5521-3	1	12	10-24
HEL5521-4	1	12	1/4" - 20
HEL5521-5	1	12	5/16" - 18
HEL5521-6	1	12	3/8" - 16
HEL5521-7	1	6	7/16" - 14
HEL5521-8	1	6	1/2" - 13
HEL5521-10	1	6	5/8" - 11
HEL5521-12	1	4	3/4" - 10

HeliCoil



FRACTIONAL FINE THREAD REPAIR KITS

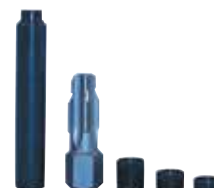
Part #	Qty	# of Inserts	Size
HEL5528-3	1	12	10-32
HEL5528-4	1	12	1/4" - 28
HEL5528-5	1	12	5/16" - 24
HEL5528-6	1	12	3/8" - 24
HEL5528-7	1	6	7/16" - 20
HEL5528-8	1	6	1/2" - 20
HEL5528-9	1	6	9/16" - 18
HEL5528-10	1	6	5/8" - 18
HEL5528-12	1	6	3/4" - 16

METRIC THREAD REPAIR KITS

Part #	Qty	# of Inserts	Size
HEL5542-8	1	12	M8 x 1.00
HEL5542-10	1	12	M10 x 1.00
HEL5543-10	1	12	M10 x 1.25
HEL5543-11	1	6	M11 x 1.25
HEL5543-12	1	6	M12 x 1.25
HEL5544-12	1	6	M12 x 1.50
HEL5544-14	1	6	M14 x 1.50
HEL5546-5	1	12	M5 x .8
HEL5546-6	1	12	M6 x 1.00
HEL5546-7	1	12	M7 x 1.00
HEL5546-8	1	12	M8 x 1.25
HEL5546-9	1	12	M9 x 1.25
HEL5546-10	1	12	M10 x 1.50
HEL5546-11	1	6	M11 x 1.50
HEL5546-12	1	6	M12 x 1.75
HEL5542-10	1	12	M10 x 1.00

HEL5334-14 Thread Repair Kit M14 x 1.25"

- The only thread repair product that can be used to repair both taper seat and gasket type spark plug assemblies
- Three insert lengths are available to accommodate all spark plug reaches
- Positive mechanical locking feature means the insert will never come out
- The piloted reamer tap means no drilling is necessary and perfect alignment of the tapped hole



THREAD REPAIR TOOLS

HeliCoil



THREAD REPAIR INSERTS

Part #	Qty	# of Inserts	Size
HEL1084-6	1	12	M6 x 1
HEL1084-8	1	12	M8 x 1.25
HEL1084-10	1	12	M10 x 1.5
HEL1185-5	1	12	5/16" - 18
HEL1185-6	1	12	3/8" - 16
HEL1185-7	1	6	7/16" - 14

METRIC FINE REPAIR INSERTS

Part #	Qty	# of Inserts	Size
HEL3745-14	1	6	M14 x 1.5
HEL4649-10	1	12	M10 x 1.25
HEL4649-12	1	6	M12 x 1.25

SAVE-A-THREAD INSERTS

Part #	Qty	Length	Size
HEL5326-14L	1	Long	M14 x 1.25



External Thread Repair Tools

- External tools restore inch or metric, right handed or left handed fastener threads
- Floating cutters are self-adjusting to any pitch and size within range
- No need for calibration or identifying thread types
- Automatically chases good thread sections to repair the damaged parts

ANGES1A External Thread Repair Tool 5/32" to 11/16"



ANGES2 External Thread Repair Tool 11/16" to 1 1/2"



ANGES06040 External Thread Repair Tool 5/32" to 1/2"



FJC2754

SAE Thread Chaser Kit

- Repair/recondition threads on gas/liquid fittings in A/C, hydraulic and gas applications
- UNF 5/8" - 18, 3/4" - 16, 7/8" - 14, 1" - 14, 1-1/16" - 14
- Highly tempered for strength and durability and are hex shaped for use with a socket or wrench



FJC2755

Metric Thread Chaser Kit

- M14 x 1.5, M16 x 1.5, M20 x 1.5, M22 x 1.5, M24 x 1.5, M27 x 2, M28 x 1.5

THREAD REPAIR TOOLS



ANGNES1017

4-Piece External/Internal Thread Repair Set

- External capacity: 5/32" to 11/16"
- Internal capacity: 5/16" to 13/16"
- One hand tool restores inch or metric, right handed or left handed fastener threads
- No need for calibration or identifying thread types
- Floating cutters are self-adjusting to any pitch and size within range

This set comes with one external and three internal tools. The Nes1A external thread repair, which has a working capacity from 5/32" - 11/16". Also the Nes21, Nes22 and Nes23 internal tools, which have a working capacity from 5/16" - 7/16", 1/2" - 5/8", and 11/16" - 13/16".



ANGNES1025

6-Piece External/Internal Thread Repair Set

- External capacity: 5/32" to 1 1/2"
- Internal capacity: 5/16" to 1 1/4"
- One-hand tool restores inch or metric, right handed or left handed fastener threads
- No need for calibration or identifying thread types
- Floating cutters are self-adjusting to any pitch and size within range



ANGNES1015

3 Piece External/Internal Thread Repair Set

- External capacity: 5/32" to 11/16"
- Internal capacity: 5/16" to 5/8"
- One-hand tool restores inch or metric, right handed or left handed fastener threads
- No need for calibration or identifying thread types
- Floating cutters are self-adjusting to any pitch and size within range

This set comes with one external and two internal tools. The Nes 1A external thread repair, which has a working capacity from 5/32" - 11/16". Also the Nes 21 and Nes 22 internal tools, which have a working capacity from 5/16" - 7/16" and 1/2" - 5/8".



ANGNES1300

3 Piece External Thread Repair Set, 5/32" to 6"

- External capacity: 5/32" to 6"
- External tools restore inch or metric, right handed or left handed fastener threads
- Floating cutters are self-adjusting to any pitch and size within range
- No need for calibration or identifying thread types
- Automatically chases good thread sections to repair the damaged parts

CTA8240

53 Piece Universal Rethreading Set

- Color Coded Tapes and Dies
- Includes thread files #8231 and #8233
- Heavy duty blow-mold case



Tap & Die Sets

Metric: 6 x 1.00, 8 x 1.25, 8 x 1.50, 10 x 1.00, 10 x 1.25, 10 x 1.50, 11 x 1.50, 12 x 1.25, 12 x 1.50, 12 x 1.75, 14 x 1.50mm

NC-USS: 1/4" - 20, 5/16" - 18, 3/8" - 16, 7/16" - 14, 1/2" - 13, 9/16" - 12, NF-SAE: 1/4" - 28, 5/16" - 24, 3/8" - 24, 7/16" - 20, 1/2" - 20, 9/16" - 18

Dies (only) Metric: 6 x 1.25, 7 x 1.00, 8 x 1.00mm, NC-USS: 5/8" - 11, NF-SAE: 5/8" - 18



THREAD REPAIR TOOLS



KAS971

Fractional SAE and Metric Thread Restorer 48-Piece Kit

- 7 SAE Coarse Dies, sizes: 1/4"-20, 5/16"-18, 3/8"-16, 7/16"-14, 1/2"-13, 9/16"-12, 5/8"-11
- 7 SAE Fine Dies, sizes: 1/4"-28, 5/16"-24, 3/8"-24, 7/16"-20, 1/2"-20, 9/16"-18, 5/8"-18
- 10 Metric Dies, sizes: M6-1.00, M8-1.25, M10-1.00, M10-1.25, M10-1.50, M11-1.50, M12-1.25, M12-1.50, M12-1.75, M14-1.50
- 6 SAE Coarse Taps, sizes: 1/4"-20, 5/16"-18, 3/8"-16, 7/16"-14, 1/2"-13, 9/16"-12
- 6 SAE Fine Taps, sizes: 1/4"-28, 5/16"-24, 3/8"-24, 7/16"-20, 1/2"-20, 9/16"-18
- 10 Metric Taps, sizes: M6-1.00, M8-1.25, M10-1.00, M10-1.25, M10-1.50, M11-1.50, M12-1.25, M12-1.50, M12-1.75, M14-1.50
- One (1) SAE Rethread File, 8 sizes (threads per inch): 11, 12, 13, 14, 16, 18, 20, 24
- One (1) Metric Rethread File, 8 sizes (millimeters per thread): 0.75mm, 1.00mm, 1.25mm, 1.50mm, 1.75mm, 2.00mm, 2.50mm, 3.00mm
- Packaged in a plastic blow molded case for protection and easy use

WARNING: Cancer and Reproductive Harm - www.P65Warnings.ca.gov



KAS972

40 Piece Fractional and Metric Thread Restorer Kit

- Contains: 17 National coarse dies, sizes: 1/4" - 20, 5/16" - 18, 3/8" - 16, 7/16" - 14, 1/2" - 13, 9/16" - 12, 5/8" - 11 17 National fine dies, sizes: 1/4" - 28, 5/16" - 24, 3/8" - 24, 7/16" - 20, 1/2" - 20, 9/16" - 18, 5/8" - 18 16 metric dies, sizes: M6 x 1, M8 x 1.25, M10 x 1.5, M12 x 1.25, M12 x 1.5, M12 x 1.75 16 National coarse taps, sizes: 1/4" - 20, 5/16" - 18, 3/8" - 16, 7/16" - 14, 1/2" - 13, 9/16" - 12 12 National fine taps, sizes: 1/4" - 28, 5/16" - 24, 3/8" - 24, 7/16" - 20, 1/2" - 20, 9/16" - 18 16 metric taps, sizes: M6 x 1, M8 x 1.25, M10 x 1.5, M12 x 1.25, M12 x 1.5, M12 x 1.75 One SAE rethread file, 8 sizes (threads per inch) 11, 12, 13, 14, 16, 18, 20, 24 One metric rethread file, 8 sizes (millimeters per thread): .75mm, 1.00mm, 1.25mm, 1.50mm, 1.75mm, 2.00mm, 2.50mm, 3.00mm Packaged in a plastic blow molded case
- Repairs damaged bolts and nuts
- Do not use to cut new threads

WARNING: Cancer and Reproductive Harm - www.P65Warnings.ca.gov

KAS2588

6 Piece Metric Thread Restorer Tap Set

- Sizes: M6-1.00, M8-1.25, M10-1.50, M12-1.25, M12-1.50, M12-1.75
- Packed in a reusable clamshell package
- Dimensions: 4.563" X 4.625" X 0.813"

WARNING: Cancer and Reproductive Harm - www.P65Warnings.ca.gov



OTC7402

Universal Outside Thread Chaser

- The die cast alloy V-pad will not damage the threads
- V-pads and dies can be replaced when worn out
- Capacity: from 1 1/4" to 5" O.D.
- Thread chaser, complete with 6 dies: threads per inch - 4, 5, 6, 7, 7 1/2, 8, 9, 10, 11, 11 1/2, 12, 14, 16, 18, 20, 24
- Weight: 2 lbs., 13 oz.

WARNING: Cancer and Reproductive Harm - www.P65Warnings.ca.gov



MAR39303

Thread Setter Kit, Metric

- This metric Poly - Nut contains the high - quality 39200 Thread - Setter tool in a molded plastic case
- Includes: #39200 Thread-Setter Tool, 4mm, 5mm, 6mm, 8mm Mandrels, Nosepieces, Wrench, Instructions and 75 Assorted Klik Poly-Nuts: 25 each #57407, #57409, 15 each #57411, 10 each #57413 with Plastic Case



MAR39302

Thread-Setter Kit - SAE

- Comes in a handy molded carrying case
- 44 assorted Klik poly nuts
- Contains Fastenal Tool Setter # 0126101 in a molded plastic case with 8-32, 10-32 and 1/4-20 mandrels and nosepieces, wrench and instructions. The kit contains 44 assorted Klik Poly-Nuts 12 each Fastenal P/Ns (Marson #) 0126067(57425), 0126068(57435), 0126069(57445), 8 of 0126070(57455)

UTILITY KNIVES



KT173102 Quick Change Folding Utility Knife

- Overall length 6.5"; closed length 4.3125"
- Plastic body with rubber grip
- Blade case with 3 blades included

WARNING: Cancer and Reproductive Harm - www.P65Warnings.ca.gov



KT173103 Auto Loading Folding Utility Knife

- Overall length 7"; closed length 4.375"
- Zinc body, ABS and rubber grip
- 3 blades included

WARNING: Cancer and Reproductive Harm - www.P65Warnings.ca.gov



KT173104 Jumbo Monster Utility Knife

- Extra-large grip for added control
- Quick-change blade system
- Includes six (6) snap-off blades
- Measures a whopping 8" x 2.5" x 1"
- Lifetime warranty

WARNING: Cancer and Reproductive Harm - www.P65Warnings.ca.gov



KT173105 Heavy Duty Retractable Utility Knife

- 6" long with extra blade storage in the handle

WARNING: Cancer and Reproductive Harm - www.P65Warnings.ca.gov



KNP9855 Dismantling Knife

- Ergonomically improved handle shape with comfortable slip guard
- Thumb recess and "finger hook" at the end of the handle
- Transparent protective cap
- VDE tested according to DIN EN/IEC 60900 : 2004



MLW48-22-1910

Side Open Utility Knife with **FREE** Bottle Opener

- Tool-free blade change - Change blades up to 5X Faster
- Side slide blade activation - Less accidental activations
- Chrome plated - best-in-class rust protection
- Anti-roll design - stays where you put it
- Bottle opener has built-in wire stripper - up to 12 gauge (MLW48-22-2000)



IRW1858320

FK250 Folding Utility Knife

- Fold-out screwdriver and additional bit storage fits 1" insert bits for quick fixes and provides additional tool versatility
- #2 Phillips and #1 Square insert bits Included
- Ergonomic "Trigger Grip" handle design
- Patented BladeLock™ technology keeps blade locked in place
- Built-in blade storage stores up to 2 utility blades; comes with 3 blades



IRW1858319

FK150 Folding Utility Knife

- Patented BladeLock™ technology keeps blade locked in place
- Ergonomic "Trigger Grip" handle design
- Stores up to 2 utility blades; comes with 3 blades
- Wire stripper for built-in convenience
- Liner lock for quick one-handed operation



IRW2089100

Folding Lockback Knife

- Allows the blade to be changed quickly and easily with the push of a button
- Prevents the blade from being pulled out during use - blade can be removed when knife is at a 45° angle
- Wire-stripping notch - built-in convenience for skinning wire



IRW1858318

FK100 Folding Utility Knife

- Patented BladeLock™ technology keeps blade locked in place
- Liner lock for quick one-handed operation
- All metal body design for added durability
- Wire stripper for convenience
- 1 blue blade included



SCRAPERS



KDT3390

Mini Scraper with Plastic Sleeve

- Its small size allows for scraping in confined areas



KDT3528

7" Extended Long Reach Scraper

- Contains two replacement blades, including one plastic blade which will not harm coated windows



KDT3528-70

Replacement Plastic Blade for KDT3528



KDT2106

All Purpose Scraper Sticker Remover

- Tool locks into 3 operating positions
- Cutting edge folds into the handle for safe storage



KT170016

Mini Scraper

- Uses #12 Blade
- Vinyl Coated Handle
- Colors May Vary



WARNING: Cancer and Reproductive Harm - www.P65Warnings.ca.gov



LIS52400

Fold Up Scraper

- Blade folds into the handle for safe, convenient storage
- Three arm positions and a slanted blade for proper scraping
- Includes (1) single edge razor blade
- Overall length: 7-3/4"



WARNING: Cancer and Reproductive Harm - www.P65Warnings.ca.gov



LIS52000

Razor Blade Style Scraper

- Comes with 5 stainless steel blades and 1 plastic blade
- Spring-release allows easy interchange of blades
- Hollow handle stores all blades when not in use



WARNING: Cancer and Reproductive Harm - www.P65Warnings.ca.gov



EZRMS3000

Monster Scraper Kit

- All aluminum construction
- 3/4" foam handle for a super grip
- Blades included
- Removes side molding adhesive and other hard to remove substances
- Includes 3 scrapers and 5 blades in case

EZRMS600

6" Monster Scraper

- Rugged aluminum body
- Heavy duty
- E-Z to see red grip
- Designed for the technical pro



ASR66-0445

Deluxe Heavy Duty Window Scraper with 5 Blades

- Contour design for comfort
- Brass carrier with 3 stop positions
- Safe scraping stop
- Blade change position



SGT87965

Extra Long Sticker Scraper

- Specially designed to access steep, sloping windshields
- Excellent for corners and on curved surfaces
- Includes 5 standard steel razor blades and 1 plastic blade
- Use plastic blade on laminated windows and plastic bumpers
- The blade in the holder can be reversed for storage, the other blades store in the handle
- Heavy duty construction • 16" overall length

WARNING: Cancer and Reproductive Harm - www.P65Warnings.ca.gov

SGT87940

3-Position Inspection Sticker Scraper

- General purpose scraper uses single edge razor blade
- Can be used in three different lock positions
- Blade section folds into handle and locks for safe storage
- Includes blade



WARNING: Cancer and Reproductive Harm - www.P65Warnings.ca.gov

SCRAPERS

TITAN



TIT12030

Single Edge Razor Blade Scraper

- Ideal for scraping labels and decals from glass, windshields, etc.
- Comfortable TPR handle for maximum grip
- Includes one extra heavy duty .020" razor blade - over twice as thick as a standard blade
- Accepts all standard single edge razor blades
- Lifetime warranty

TITAN



TIT17008

22-Piece Scraper Set with Non-Marring Blades

- 9" Razor scraper accepts standard single edge razor blades and non-marring blades
- Non-scratching/non-marring scraper blades are ideal for scraper finished surfaces
- (11) 0.020" razor blades • (10) Non-marring scraper blades

RAZOR BLADES



IRW2084300

50 Pack Bi-Metal Razor Blades

- Features patented Bi-Metal technology that sets new standards of performance
- Unbreakable (under normal working conditions) - spring steel body delivers superior flexibility to prevent breaking
- Last longer - high speed steel cutting edge stays sharp longer than traditional carbon utility blades
- Fits most utility knives



LIS52150

Stainless Steel Razor Blades 100/Pk

- Convenient pack of standard razor blades
- Contains 100 stainless steel, single edged razor blades
- Fits all standard razor blade tools, including Lisle 52000 Razor Blade Scraper
- Clamshell packaging • Shipping weight: 12 oz.

WARNING: Cancer and Reproductive Harm - www.P65Warnings.ca.gov



Part #	Qty	Type	Size
ASR66-0448	100	Single Edge	.012" Blades
ASR66-0210	10	Single Edge	.009" Blades
ASR66-0403	100	Duro Edge	.009" Blades
ASR66-0454	5	Wide	4" Wide Blades
ASR66-0372	5	Breakaway	8 Cutting Tips
ASR66-0341	5	Utility	.025" 2 Notch
ASR66-0240	100	Utility	.025" 2 Notch

TITAN



TIT11038

100-Piece Single Edge #12 Razor Blades

- Single Edge #12 Razor Blades, Heavy Duty,
- .012" Thickness, 100 Pack



WARNING: Cancer and Reproductive Harm - www.P65Warnings.ca.gov

TMRMI120 Metal Razor Blades Single Edge #9 Blade

- .009 Thick



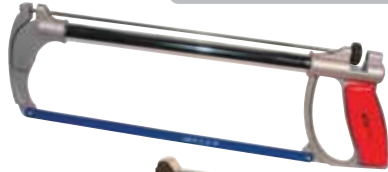
HACK SAWS

WARNING: Cancer and Reproductive Harm - www.P65Warnings.ca.gov



KT172801
12" Tubular Hacksaw

- Top quality
- Sturdy



WARNING: Cancer and Reproductive Harm - www.P65Warnings.ca.gov

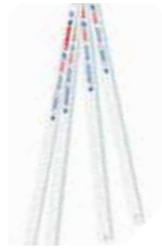
KT172802
Extra Heavy Duty Hacksaw

- All metal heavy duty frame
- High leverage tensioner blade can be set at 45° or vertical
- Handle with blade storage compartment



LEX20145
Hacksaw Blades 10 Pack, 12" X 24 TPI, BI-METAL, T2

- Bi-metal construction allows blades to bend and flex without breaking
- Spring steel back • 24 teeth per inch
- Used for cutting medium metal
- Lifetime warranty does not cover abuse



SAW BLADES



MLW48-40-4515
Circle Saw Blade Metal 8" 42T

- 8 in. diameter • 5/8 in. arbor hole
- Cermet tipped for longer life, more wear resistant
- Hardened steel body
- Vibration dampening
- 5 year warranty



Band Saw Blades 3 Pack

- Matrix II high-speed steel teeth excel in metal-cutting
- Long life: Alloy backing steel extends blade life
- Designed for cutting common materials 5/32" - 3/16" thick and very hard materials 3/16" - 5/16" thick

Part #	Type	TPI	Qty
MLW48-39-0511	Standard Deep Cut	14	3
MLW48-39-0531	Standard Deep Cut	24	3

RECIPROCATING SAW BLADES

**IRWIN.
HANSON.**



Part #	Type	TPI	Qty
HAN372614P5	6" Metal Cutting	14	5
HAN372810P5	8" Wood & Metal	10	5
HAN372618B	6" Metal Cutting	18	25
HAN372818P5	8" Metal Cutting	8	5
HAN372960	9" Wood & Metal	10	1



MLW49-22-1110
Milwaukee® 10-Piece SAWZALL® General Purpose Blade Set

- Optimized tooth design providing longer life than standard bi-metal blades
- SAWZALL® blades Tough Neck™ ribs strengthen the blade tang and minimize breakage
- Wood cutting blades have a 5 TPI design for fast aggressive cuts
- NAIL GUARD™ to protect teeth from fractures
- FANG TIP™ bites into the wood on first contact for plunge cuts

The Milwaukee® 10 piece Sawzall® blade set features an assortment of standard wood and metal cutting Sawzall® blades for a broad range of professional applications. The set includes two 6" wood cutting blades for increased control, one 9" wood cutting blade for greater cutting capacity, three 6" 14TPI blades for medium to thick metal cutting, three 6" 24 TPI blades for thin metal cutting. and one 9" 18 TPI blade for medium metal cutting. The set also includes a durable job site case for convenient blade storage.



MLW48-00-5184
Milwaukee® 6 in. 18 TPI SAWZALL® Saw Blade (5-Pack)

- Double relief angle reduces tooth stress for long life
- Precision forming process creates sharper teeth for fast cutting
- Matrix II bi-metal teeth for greater durability

Milwaukee® designs and manufactures Sawzall® blades for the toughest professional applications. Material, blade geometry and heat treating are designed to maximize metal cutting performance.

RECIPROCATING SAW BLADES



MLW49-22-1129

12 Piece Sawzall® Blades Set

- Double relief angle reduces tooth stress
- Thicker blade stock for maximum durability
- 1" tall blade profile for straighter cuts

Set includes: (2) 6" 5 TPI™ The Ax SAWZALL® Blade, (2) 6" 8 TPI The Wrecker™ SAWZALL® Blade, (4) 6" 18 TPI The Torch™ SAWZALL® Blade, (2) 9" 5 TPI The Ax™ SAWZALL® Blade and (2) 9" 14 TPI The Torch™ SAWZALL® Blade

MLW49-22-1131

Ice Hardened™ 14 Piece Metal Cutting Sawzall® Blade Set

- Ice Hardened™ for up to 50% longer life
- Matrix II bi-metal teeth for greater durability

Set includes: (4) 6" 14 TPI blades; (4) 6" 18 TPI blades; (2) 9" 10 TPI The Torch® blades; (2) 9" 14 TPI The Torch® blades; (2) 9" 18 TPI The Torch® blades and (1) storage pouch

Part #	Description	TPI	Qty
MLW48-00-4186	6" Ice Hardened	24	5
MLW48-00-4187	9" Ice Hardened	14	5
MLW48-00-4188	9" Ice Hardened	18	5

The Torch™ SAWZALL® Blades

- SAWZALL® blades Tough Neck™ ribs strengthen the blade tang and minimize breakage
- Grid Iron™ honeycomb pattern increases blade rigidity to resist blade buckling
- 5 year warranty on material and workmanship

Part #	Description	TPI	Qty
MLW48-00-5782	6" The Torch	14	5
MLW48-00-5784	6" The Torch	18	5
MLW48-00-5787	9" The Torch	14	5
MLW48-00-5788	9" The Torch	18	5

Sawzall® Saw Blades

- Double relief angle reduces tooth stress for long life
- Precision forming process creates sharper teeth for fast cutting
- Matrix II bi-metal teeth for greater durability
- 5 year warranty on material and workmanship

Part #	Description	TPI	Qty
MLW48-01-6184	6" Sawzall Blades	18	50
MLW48-00-5182	6" Sawzall Blades	14	5
MLW48-00-5189	12" Sawzall Blades	18	5



MLW48-00-5188

Milwaukee® 9" with 18 TPI Medium Metal Cutting SAWZALL® Reciprocating Saw Blades (5-Pack)

- Double relief angle reduces tooth stress for long life
- Precision forming process creates sharper teeth for fast cutting
- Matrix II bi-metal teeth for greater durability
- 2X more life than our previous generation SAWZALL blades
- Tough Neck ribs strengthen the blade tang and minimize breakage

The Milwaukee 48-00-5188 9 in. x 18 Teeth per in. Thin Kerf metal-cutting Blade with the Double Duty Upgrade feature a tooth form that is optimized for the longest life and increased speed. Tough Neck is engineered to protect against tang breakage and delivers the strongest SAWZALL blade tang on the market. Maintaining a short profile and thin body, these Blades are ideal for making fast, flexible cuts. The Milwaukee 48-00-5188 contains 5 Blade.



IRTP4FS-6

Ingersoll Rand Bi-Metal 32 TPI Fine Saw Blades (6-Pack)

- Created using a solid-state diffusion process that applies high speed steel to both edges of the backing material, which increases the contact area by 170 percent
- New tooth profile that generates more (but smaller) chips
- Reduces frictional heat that is generated during the cutting application, which will enhance overall performance
- Fine standard pitch
- 32 TPI, fine saw

IRTP4CS-6

6 Pack Coarse 24 TPI Bi-Metal Saw Blades

- Created using a solid-state diffusion process that applies high speed steel to both edges of the backing material, which increases the contact area by 170 percent
- New tooth profile that generates more (but smaller) chips
- Coarse standard pitch
- 1 year warranty on material and workmanship



RECIPROCATING SAW BLADES



Reciprocating Saw Blades

- Bi-metal construction allows blades to bend and flex without breaking
- High heat and water resistance
- Shatterproof, shock resistant, precision milled teeth

Part #	Type	TPI	Qty
LEX20562	6", 641R Wood & Metal	10	5
LEX20563	8", 818R Wood & Metal	18	5
LEX20564	6", 614R Thick Metal	14	5
LEX20568	6", 624R Medium Metal	24	5
LEX20578	8", 818R Medium Metal	18	5
LEX20580	8", 810R Wood & Metal	10	5

HOLE SAWS / CUTTERS



HAN3073004 17 Piece General Purpose Bi-Metal Hole Saw Kit

- Contains the most commonly used sizes for plumbers, electricians and general applications
- 4/6 variable pitch teeth for reduced noise and improved performance
- Super hard steel RC 65-66 for increased life
- Bi-metal construction for toughness and long life
- Clearly printed hole sizes for quick retrieval

Includes sizes: 5/8", 3/4", 7/8", 1", 1-1/8", 1-1/4", 1-3/8", 1-1/2", 1-3/4", 2", 2-1/2", 3", 1/2" Hex, 3/8" Hex, Pilot Drill (3)



LEX30017 Hole Saw, 1-1/16", Long Lasting BI-METAL

- Bi-metal construction allows blades to bend and flex
- Shatterproof and shock resistant
- Patented variable tooth set and height ensure that each tooth works independently, with super efficiency
- Lifetime warranty does not cover abuse

HOLE SAWS / CUTTERS



OTC4383

Hole Punch Kit

- Will pierce up to 14 gauge steel
- 7 sets punches and dies
- Carry case
- 3/32", 1/8", 5/32", 3/16", 7/32", 1/4", and 9/32"



BLR11091

Large Diameter Rotabroach Cutter Kit - Fractional

- Contains six of the most popular sizes
- A must have for any tool box fabricator
- For materials up to 1/2" thick
- Made in the U.S.A.



Includes: 7/8", 1", 1-1/8", 1-1/4", 1-3/8", and 1-1/2" cutters, arbor (11007), hex washer, center punch and extra pilots.



BLR14006

Holcutter™ Kit

- Precision ground, heat treated tools made from M2 HSS that can easily cut thru the stock rather than ripping, tearing, and pushing thru as do typical hole saws
- Can produce holes 3 times faster and cleaner than hole saws in sheet metal and have a dramatically extend tool life
- Produce holes from 11/16" up to 3" diameter in sheet metal, rubber, gasket or fiber materials, and some plastics up to 1/8" thick
- Ideal for aftermarket installations, custom fabrication, gauge installation, and modification of trailers
- Patented quad-lead thread system, making cutter changes quicker than ever before

Includes: 7/8", 1-1/8", 1-3/8", 1-3/4", 2" and 2-1/2" cutters, arbor and extra pilot.

HOLE SAWS / CUTTERS



MLW49-22-4175

15 Piece General

Purpose Ice Hardened™ Hole Saw Kit

- Ice Hardened™ for up to 50% longer life than the competition
- Functional slots for faster plug removal
- Optimized tooth form for up to 2X faster cutting
- Matrix II bi-metal teeth for faster plug removal
- Carrying case features room for additional hole saw and arbor storage

Kit includes: eleven (11) hole saws: 3/4", 7/8", 1", 1-1/8", 1-3/8", 1-1/2", 1-3/4", 2", 2-1/8", 2-1/4", 2-1/2"; two arbors: 49-56-7010, 49-56-9100; 2 drill bits: 49-56-8010; one adapter: 49-56-6560; one spacer: 49-67-0120 and space for additional hole saws.

MLW49-22-4105

19 Piece Master Electrician's Ice Hardened™ Hole Saw Kit

Kit includes: (14) Hole Saws: 3/4", 7/8", 1-1/8", 1-3/8", 1-1/2", 1-3/4", 2", 2-1/4", 2-1/2", 2-5/8", 3", 3-5/8", 4-1/8", 4-3/4"; (2) Arbors with Pilot Bits: 49-56-7010, 49-56-9100; (3) Additional Pilot Bits: 49-56-8010; Adapter: 49-56-6560; Spacer: 49-67-0120



MLW49-22-4025

Milwaukee® 13-Piece Hole Dozer™ General Purpose Ice Hardened Hole Saw Kit

Kit Includes: Nine (9) Hole Saws: 3/4", 7/8", 1-1/8", 1-3/8", 1-1/2", 1-3/4", 2", 2-1/8", 2-1/2"; Two (2) Arbors: 49-56-7010, 49-56-7250; Two (2) Pilot Bits: 49-56-8010 (assembled with arbors).



MLW49-56-0213

4" Ice Hardened™ Hole Saw

- Ice Hardened™ for up to 50% longer life than competition
- Optimized tooth form for up to 2 times faster cutting
- Functional slots for faster plug removal
- Matrix II bi-metal teeth for greater durability

SPOTWELD TOOLS



BLR11090N

11,000 Series

Rotabroach® Cutter Kit

- Arbors assembly
- Extra pilot
- Center punch
- Hex wrench and washers
- Includes 5/16", 3/8", 7/16", 1/2", 9/16", 5/8", and 3/4"



BLR11096

3 Piece 3/8" Cutters Heavy Duty Spotweld Cutter Set

- (3) 3/8" Cutters; fit 3/8" and 1/2" hand held drill chucks
- Arbor Assembly (11123) with skip proof Pilot
- Extra pilot included
- Made of M2 High Speed Steel



BLR11082

3 Piece 3/8" Cutters Spotweld Cutter Set

- (3) 3/8" cutters
- Arbor assembly (11122) with standard pilot, and an extra pilot
- Cutters fit 3/8" and 1/2" hand held drill chucks
- Patented tooth geometry also prevents chip clogging when cutting steel, sheet metal, plastic and wood
- Made of high speed steel

SPOTWELD TOOLS



BLR11122 Spotweld Arbor for Rotabroach (1/4" - 3/4")

- With 3/8-24 cutter mounting thread to fit 1/4" through 3/4" diameter cutters
- Triple flattened for 3/8" chuck
- Includes pilot pin and washer



Made in U.S.A.

BLR11121 Pack of 3 Pilots



Made in U.S.A.

BLR13214 3/8" Double-End Spotweld and Access Cutter (3 Pack)

- Unique 3/8" diameter hardened and precision ground cutting tool that makes removing spot welded body panels fast and easy
- Hollow design cuts around weld, thus hardness does not affect tool sharpness
- An adjustable depth rod sets the tool so only the outer panel is cut through, leaving the underlying panel undamaged
- When one end becomes dull, simply unscrew the cutter from the arbor, and reassemble with the new teeth exposed
- With arbor, for use in any 1/4", 3/8", or 1/2" chuck hand held drill



BLR13224 Double-End Spotweld Cutter in Blister Pack

- Includes: BLR13219 spotweld cutter assembly and instructions



BLR11093 Premium Spotweld w/Skip Proof Pilot

BLR11094 Premium Spotweld Cutter with Standard Pilot (3/8")

BLR11308 Spot Weld Cutter 8mm



Made in U.S.A.

BLR13216 1/4" Arbor with Retractable Pilot

- For blaircutters and spotweld cutters

BLR13217 Package of 3 Retractable Pilots

- For blaircutters and spotweld cutters



11,000 Series Rotabroach® Cutters

- For heavy duty use in sheet metal and materials up to 1/2" thick
- 1/4" through 3/4" sizes sold in packages of 3
- Precision round holes • Rustproofing
- Great for luggage racks, spoilers, frames and channels



Made in U.S.A.

11,000 SERIES ROTABROACH® CUTTERS

Part #	Diameter	Decimal Equivalent	Max D.O.C.
BLR11100-3	1/4"	.2500	1/4"
BLR11104-3	5/16"	.3125	1/4"
BLR11108-3	3/8"	.3750	1/4"
BLR11112-3	7/16"	.4375	1/4"
BLR11116-3	1/2"	.5000	1/4"
BLR11120-3	9/16"	.5625	1/4"
BLR11124-3	5/8"	.6250	1/4"
BLR11132-3	3/4"	.7500	1/4"



Made in U.S.A.



13,000 Series Blaircutters™

- When you don't have a lot of holes to make, economical 13,000 series Blaircutters™ provide fast, accurate, burr-free holes in materials up to 3/16" thick.

13,000 SERIES BLAIRCUTTERS™

Part #	Diameter	Max D.O.C.
BLR13202	5/16"	3/16"
BLR13204	3/8"	3/16"
BLR13206	7/16"	3/16"



SGT18000

3/8" Rotary Spot Weld Cutter

- Quickly removes spot welds holding sheet metal
- Double-ended 3/8" blade and 1/4" arbor with retractable pilot
- Blades interchange with other spot weld arbors
- Arbor fits all 1/4" drills

⚠ WARNING: Cancer and Reproductive Harm - www.P65Warnings.ca.gov

SGT18025 - Replacement Blades for SGT18000

⚠ WARNING: Cancer and Reproductive Harm - www.P65Warnings.ca.gov



SPOTWELD TOOLS



DENDF15DX Spot Annihilator Spot Weld Drill Kit

- Applies cutting pressure for you, no need to push
- Depth-adjustable, cut out only the spot weld
- 1,000 rpm for harder steels in today's cars
- Leading spot weld drill in the industry
- Guaranteed customer satisfaction

SPOT WELD DRILL BITS

Part #	Size	Description
DENDF1480	8mm x 45mm	HSCO
DENDF1780	8mm x 80mm	HSCO
DENDF1610	10mm	HSCO
DENDF1610T	10mm	HSCO Titanium Coated
DENDF1680T	8mm	HSCO Titanium Coated
DENDF1690	8mm	Boron Steel



KNK10KK14BS 10 Piece Carbide Burr Set with 1/4" Shanks

- Solid carbide
- Double cut
- 1/4" shanks
- Solid wood case

KnKut Double Cut Carbide Burrs allows for rapid stock removal in harder materials.



KNK12KK14BS 12 Piece Carbide Burr Set with 1/8" Shanks

TAP AND DIE SETS

SAE/Metric Sets

**IRWIN
HANSON®**



HAN26376 76 Piece SAE/ Metric Tap/Die Super Set

- Combination machine screw, fractional and metric



Set Includes: Machine Screw Plug Tap and 5/8" Hexagon Dies in sizes: 4 - 40 NC, 6 - 32 NC, 8 - 32 NC, 10 - 24 NC, 10 - 32 NF, 12 - 24 NC Fractional Plug Tap and 1" Hexagon Dies in sizes: 1/4" - 20 NC, 1/4" - 28 NF, 5/16" - 18 NC, 5/16" - 24 NF, 3/8" - 16 NC, 3/8" - 24 NF, 7/16" - 14 NC, 7/16" - 20 NF, 1/2" - 13 NC, 1/2" - 20 NF Metric Plug Tap and 5/8" Hexagon Dies in sizes: 3mm - 0.50, 4mm - 0.70, 4mm - 0.75, mm - 0.80, 5mm - 0.90, 6mm - 1.00 Metric Plug Tap and 1" Hexagon Dies in sizes: 7mm - 1.00, 8mm - 1.00, 8mm - 1.25, 9mm - 1.00, 9mm - 1.25, 10mm - 1.25, 10mm - 1.50, 11mm - 1.50, 12mm - 1.50, 12mm - 1.75 Pipe Thread Plug Tap and 1" Hexagon Dies in sizes: 1/8" - 27 NPT, 1/8" - 28 BSP Threading Tools: Adjustable Die Stock - 1" Dies, Plain Die Stock - 5/8" Hexagon Dies, Adj. Handle Tap Wrench - Taps No. 0 to 1/2", Two-in-One Tap Wrench - Taps 1/4" to 1/2", T-Handle Wrench - Taps No. 0 to 1/4", 16 Leaf Metric Thread Pitch Gauge, 18 Leaf Standard Thread Pitch Gauge.



HAN26377 117 Piece SAE/Metric Tap, Dies, and Drill Bit Deluxe Set

- Combination machine screw, fractional and metric taps and dies, screw extractors and high speed steel drill bits
- Comes in a plastic case

Set includes: Machine Screw Plug Tap and 5/8" Hexagon Dies, NC Fractional Plug Tap and 1" Hexagon Dies, Tap and 5/8" Hexagon Dies, Metric Plug Tap and 1" Hexagon Dies, Pipe Thread Plug Tap and 1" Hexagon Dies, 28 BSP Drill Bit, Spiral Flute Screw Extractors, Threading Tools: Adjustable Die Stock - 1" Dies, Plain Die Stock - 5/8" Hexagon Dies, Adj. Handle Tap Wrench - Taps No. 0 to 1/2", Two-in-One Tap Wrench - Taps 1/4" to 1/2", T-Handle Wrench - Taps No. 0 to 1/4", 16 Leaf Metric Thread Pitch Gauge, 18 Leaf Standard Thread Pitch Gauge.

TAP AND DIE SETS

SAE/Metric Sets

**IRWIN®
HANSON®**



HAN1813817

116 Piece Tap/Die/Drill Deluxe Set with PTS Handle

116-pc set in plastic case includes: Machine Screw Plug Tap and 5/8" Hexagon Dies in sizes: 4 - 40 NC, 6 - 32 NC, 8 - 32 NC, 10 - 24 NC, 10 - 32 NF, 12 - 24 NC Fractional Plug Tap and 1" Hexagon Dies in sizes: 1/4" - 20 NC, 1/4" - 28 NF, 5/16" - 18 NC, 5/16" - 24 NF, 3/8" - 16 NC, 3/8" - 24 NF, 7/16" - 14 NC, 7/16" - 20 NF, 1/2" - 13 NC, 1/2" - 20 NF Metric Plug Tap and 5/8" Hexagon Dies in sizes: 3mm - 0.50, 4mm - 0.70, 4mm - 0.75, 5mm - 0.80, 5mm - 0.90, 6mm - 1.00 Metric Plug Tap and 1" Hexagon Dies in sizes: 7mm - 1.00, 8mm - 1.00, 8mm - 1.25, 9mm - 1.00, 9mm - 1.25, 10mm - 1.25, 10mm - 1.50, 11mm - 1.50, 12mm - 1.50, 12mm - 1.75 Pipe Thread Plug Tap and 1" Hexagon Dies in sizes: 1/8" - 27 NPT, 1/8" - 28 BSP Drill Bit Sizes: No. 3, No. 7, No. 9, No. 16, No. 19, No. 20, No. 21, No. 25, No. 29, No. 30, No. 36, No. 39, No. 43, Letter B, Letter F, Letter H, Letter I, Letter J, Letter O, Letter Q, Letter R, Letter S, Letter U, Letter Z, 5/64", 7/64", 5/32", 1/4", 19/64", 5/16", 21/64", 3/8", 25/64", 13/32", 27/64", 29/64" Spiral Flute Screw Extractors: EX - 1, EX - 2, EX - 3, EX - 4, EX - 5 Threading Tools: Adjustable Die Stock - 1" Dies, Plain Die Stock - 5/8" Hexagon Dies, Adj. Handle Tap Wrench - Taps No. 0 to 1/2", Two-in-One Tap Wrench - Taps 1/4" to 1/2", T-Handle Wrench - Taps No. 0 to 1/4", 16 Leaf Metric Thread Pitch Gauge, 18 Leaf Standard Thread Pitch Gauge, Empty Plastic Case For 26377.

**IRWIN®
HANSON®**



HAN1813816

75 Piece

Tap and Die Combo Set with PTS Handle

75-pc set in plastic case includes the following items: Machine Screw Plug Tap and 5/8" Hexagon Dies in sizes: 4 - 40 NC, 6 - 32 NC, 8 - 32 NC, 10 - 24 NC, 10 - 32 NF, 12 - 24 NC Fractional Plug Tap and 1" Hexagon Dies in sizes: 1/4" - 20 NC, 1/4" - 28 NF, 5/16" - 18 NC, 5/16" - 24 NF, 3/8" - 16 NC, 3/8" - 24 NF, 7/16" - 14 NC, 7/16" - 20 NF, 1/2" - 13 NC, 1/2" - 20 NF Metric Plug Tap and 5/8" Hexagon Dies in sizes: 3mm - 0.50, 4mm - 0.70, 4mm - 0.75, mm - 0.80, 5mm - 0.90, 6mm - 1.00 Metric Plug Tap and 1" Hexagon Dies in sizes: 7mm - 1.00, 8mm - 1.00, 8mm - 1.25, 9mm - 1.00, 9mm - 1.25, 10mm - 1.25, 10mm - 1.50, 11mm - 1.50, 12mm - 1.50, 12mm - 1.75 Pipe Thread Plug Tap and 1" Hexagon Dies in sizes: 1/8" - 27 NPT, 1/8" - 28 BSP Threading Tools: Adjustable Die Stock - 1" Dies, Plain Die Stock - 5/8" Hexagon Dies, Adj. Handle Tap Wrench - Taps No. 0 to 1/2", Two-in-One Tap Wrench - Taps 1/4" to 1/2", T-Handle Wrench - Taps No. 0 to 1/4", 16 Leaf Metric Thread Pitch Gauge, Empty Plastic Case For 26377.



GW GEARWRENCH®

KDT3887

75-Piece GearWrench Tap and Die Set SAE and Metric

- 75-piece set covers taps and dies from #4 to 1/2" and from 3mm to 12mm
- Ratcheting "T" wrench provides a 5° ratcheting arc for tapping engine blocks
- Reversible lever allows quick change from forward to reverse eliminates hand over hand turning
- Twist Lock guide system keeps dies centered while cutting threads



KDT82812

114 Piece Large SAE and Metric Ratcheting Tap and Die Set

- 5 degree ratcheting arc with reversible lever eliminates hand over hand turning
- Patented Twist Lock guide system reduces "back walk" of die guide
- Extension adapters provide access in tight confined areas
- Length of tap and die system can be extended by combining adapters and any 3/8" drive extension
- Tap holders tilt down for easy access keeping taps secure and organized

TAP AND DIE SETS

Metric Sets

IRWIN®
HANSON®



HAN26394

53-Piece Metric Tap and Hexagon Die Set

Set includes: Metric Plug Tap and 1" Hexagon Dies in sizes: 3mm-0.50, 4mm-0.70, 4mm-0.75, 5mm-0.80, 5mm-0.90, 6mm-1.00, 7mm-1.00, 8mm-1.25, 9mm-1.00, 9mm-1.25, 10mm-1.25, 10mm-1.50, 11mm-1.50, 12mm-1.50, 12mm-1.75; metric plug tap and 1-7/16" hexagon dies in sizes: 14mm-2.00, 16mm-1.50, 16mm-2.00, 18mm-1.50, 18mm-2.50; pipe thread plug tap and 1" hexagon dies in sizes: 1/8"-28 BSP, 1/4"-19 BSP; threading tools: adjustable die stock - 1" dies, adjustable die stock - hexagon dies, T-handle wrench - taps No. 0 to 1/4", T-handle wrench - taps no. 0- to 1/2", adjustable handle tap wrench - taps no. 1/4" to 1", 16 leaf metric thread pitch gauge.



HAN97311

25-Piece Metric Tap and Hex Die Set

- Includes metric plug tap and 1-7/16" hexagon dies in sizes: 14mm - 1.50, 14mm - 2.00, 16mm - 1.50, 16mm - 2.00, 18mm - 1.50, 18mm - 2.50
- Includes metric plug tap and 1-13/16" hexagon dies in sizes: 20mm - 2.50, 22mm - 1.50, 24mm - 2.00, 24mm - 3.00
- Includes threading tools: adjustable die stock - 1-7/16" hexagon dies, adjustable die stock - 1-13/16" hexagon dies, adjustable handle tap wrench - taps no. 1/4" to 1"
- Comes in a plastic case

IRWIN®
HANSON®



HAN97312

66 Piece Metric Tap and Hex Die Set

- Includes: Metric Plug Tap and 5/8" Hexagon Dies in sizes: 3mm - 0.50, 4mm - 0.70, 4mm - 0.75, 5mm - 0.80, 5mm - 0.90, 6mm - 1.00
- Includes Metric Plug Tap and 1" Hexagon Dies in sizes: 7mm - 1.00, 8mm - 1.00, 8mm - 1.25, 9mm - 1.00, 9mm - 1.25, 10mm - 1.25, 10mm - 1.50, 11mm - 1.50, 12mm - 1.50, 12mm - 1.75
- Includes Metric Plug Tap and 1-7/16" Hexagon Dies in sizes: 14mm - 1.50, 14mm - 2.00, 16mm - 1.50, 16mm - 2.00, 18mm - 1.50, 18mm - 2.50
- Includes Metric Plug Tap and 1-13/16" Hexagon Dies in sizes: 20mm - 2.50, 22mm - 1.50, 24mm - 2.00, 24mm - 3.00
- Pipe Thread Plug Tap and 1" Hexagon Dies in sizes: 1/8" - 28 BSP



HAN26317

41-Piece Metric Tap and Die Set

- Sizes: 3mm to 12mm
- Comes in a plastic storage case



OTC



OTC202817

Metric Die Set for OTC7402

- Includes three dies: 1mm-1.25mm-1.5mm-1.75mm, 2mm-2.5mm-3.0mm-3.5mm; 4mm pitch dies
- Restores threads to original condition, eliminating the need for threadcutting equipment
- V-Pad Die cast alloy
- Optional metric thread chaser die set for item No. OTC7402

TAP AND DIE SETS

Metric Sets

GW GEARWRENCH®



KDT3886

40-Piece GearWrench Tap and Die Set Metric

- 40 piece set covers taps and dies from 3mm to 12mm
- Ratcheting "T" Wrench provides a 5 degree ratcheting arc for tapping engine blocks
- Replaces need for slower existing tap and die wrenches
- Reversible lever allows quick change from forward to reverse eliminates hand over hand turning
- Twist Lock guide system keeps dies centered while cutting threads

GearWrench Tap and Die Set includes Index holders for taps. All taps and dies lock in place. Features comfort shaped grips.

Fractional Sets

**IRWIN®
HANSON®**



HAN24606

41-Piece

Machine Screw / Fractional Tap and Die Super Set

- Machine screw and fractional sizes: No. 4 to 1/2"
- Hinged plastic case with removable tray



Fractional Sets

**IRWIN®
HANSON®**



HAN97606

66 Piece Fractional Tap and Hex Die Set

- Includes Machine Screw Plug Tap and 5/8" Hexagon Dies in sizes : 4 - 40 NC, 6 - 32 NC, 8 - 32 NC, 10 - 24 NC, 10 - 32 NF, 12 - 24 NC
- Includes: Fractional Thread Plug Tap and 1" Hexagon Dies in sizes : 1/4" - 20 NC, 1/4" - 28 NF, 5/16" - 18 NC, 5/16" - 24 NF, 3/8" - 16 NC, 3/8" - 24 NF, 7/16" - 14 NC, 7/16" - 20 NF, 1/2" - 13 NC, 1/2" - 20 NF
- Includes Fractional Thread Plug Tap and 1-7/16" Hexagon Dies in sizes : 9/16" - 12 NC, 9/16" - 18 NF, 5/8" - 11 NC, 5/8" - 18 NF, 3/4" - 10 NC, 3/4" - 16 NF
- Includes Fractional Thread Plug Tap and 1-13/16" Hexagon Dies in sizes : 7/8" - 9 NC, 7/8" - 14 NF, 1" - 8 NC, 1" - 14 NS
- Includes Pipe Thread Plug Tap and 1" Hexagon Dies in sizes : 1/8" - 27 NPT, 1/4" - 18 NPT



HAN97094

25-Piece Fractional Tap and Hexagon Die Set

- Includes Fractional plug tap and 1-7/16" hexagon dies in sizes: 9/16" - 12NC, 9/16" - 18NF, 5/8" - 11 NC, 5/8" - 18 NF, 3/4" - 10 NC, 3/4"
- Includes fractional plug tap and 1-13/16" hexagon dies in sizes: 7/8" - 9 NC, 7/8" - 14 NF, 1" - 8 NC, 1" - 14 NS; pipe thread plug tap and 1-7/16" hexagon dies in sizes: 1/4" - 18 NPT
- Includes threading tools: adjustable die stock - 1-7/16" hexagon dies, adjustable die stock - 1-13/16" hexagon dies, adjustable handle tap wrench - taps 1/4" to 1"
- Includes plastic storage case



TAP AND DIE SETS

Fractional Sets

IRWIN®
HANSON®



HAN24640
253-Piece
Machine Screw/Fractional
Tap and Hexagon Die Set

Set includes: Machine Screw Plug Tap and 1" Hexagon Die in sizes: 6-32 NC, 8-32 NC, 10-24 NC, 10-32 NF, 12-24 NC; Fractional Plug Tap and 1" Hexagon Dies in sizes: 1/4" - 20 NC, 1/4" - 28 NF, 5/16" - 18 NC, 5/16" - 24 NF, 3/8" - 16 NC, 3/8" - 24 NF, 7/16" - 14 NC, 7/16" - 20 NF, 1/2" - 13 NC, 1/2" - 20 NF; Fractional Plug Tap and 1-7/16" Hexagon Dies in sizes: 9/16" - 12 NC, 9/16" - 18 NF, 5/8" - 11 NC, 5/8" - 18 NF, 3/4" - 10 NC, 3/4" - 16 NF; Pipe Thread Plug Tap and 1" Hexagon Dies in sizes: 1/8" - 27 NPT, 1/4" 18 NPT; Threading tools: adjustable die stock - 1" dies, adjustable die stock - 1-7/16" dies, T-handle wrench - taps no. 0 to 1/4", adjustable handle tap wrench - taps no. 0 to 1/2", adjustable handle tap wrench - taps no. 1/4" to 1", 18 leaf standard thread pitch gauge.

WALTON
COMPANY



WLT18001
Tap Extractor Set

- Sizes: 3/16", 1/4", 5/16", 3/8", 7/16" and 1/2"
- The hardened steel fingers of Walton Tap Extractors fit in the flutes of a broken tap to back it out simply and safely
- 4 flute design
- Replacement flutes available

GW GEARWRENCH®

KDT3885
40-Piece GearWrench
Tap and Die Set SAE

- Taps and dies from No. 4 to 1/2"
- Ratcheting "T" Wrench provides a 5° ratcheting arc for tapping engine blocks
- Replaces need for slower existing tap and die wrenches
- Reversible lever allows quick change from forward to reverse eliminates hand over hand turning
- Twist Lock Guide System keeps dies centered while cutting threads



GearWrench Tap and Die Set includes index holders for taps. All taps and dies lock in place. Features comfort shaped grips.

LANG
TOOLS
Professional Tools For 4 Generations



KAS2586
6 Piece NF Thread Restorer Tap Set

- Sizes: 1/4"-28, 5/16"-24, 3/8"-24, 7/16"-20, 1/2"-20, 9/16"-18
- Packed in a reusable clamshell package
- Dimensions: 4.688" X 4.625" X 0.875"

Tap Sockets

IRWIN®
HANSON®



HAN3095001
2 Piece Adjustable Tap Socket

- Jaws adjust to tightly secure taps from #6 to 1/2" taps
- 3/8" square drive compatible with common ratchets
- Small profile for use in tight workspaces
- Knurled ring twist to adjust for quick fit
- 2 piece set for greater versatility

Both adjustable tap sockets are 3/8" drive, one fits #6 through 1/4" taps and the second adjustable socket fits 1/4" through 1/2" taps. This Irwin innovation allows the easy use and changing of various sizes of taps.

TAP AND DIE SETS

IRWIN®
HANSON®

HAN1921

6 Piece Taper Pipe Tap Set

- Cuts internal threads in pipes
- Nominal size of the tap is that of the pipe fitting being tapped
- Ideal for pipe fittings
- Tapered at a rate of 3/4" per foot
- Comes in a wooden case
- Set includes one taper tap each of: 1/8 - 27 NPT, 1/4 - 18 NPT, 3/8 - 18 NPT, 1/2 - 14 NPT, 3/4 - 14 NPT, 1 - 11-1/2 NPT



TAPER PIPE TAPS

Part #	Description	# of Flutes
HAN8203	1/4" - 18 NPT, Plug Tap	4
HAN1903	1/4" - 18 NPT, Taper Tap	4
HAN1904	3/8" - 18 NPT, Taper Tap	4
HAN1906	3/4" - 14 NPT, Taper Tap	5
HAN1907	1" - 11-1/2 NPT, Taper Tap	5

IRWIN®
HANSON®



Thread Pitch Gauges

- Thread pitch gauge measures the number of threads per inch
- Quality construction for long life and accurate readings
- Sizes engraved in tool for easy identification
- Lifetime warranty does not cover abuse

THREAD PITCH GAUGES

Part #	Description	Package
HAN11018	18 Leaf Standard	Bulk
HAN12017	16 Leaf Standard & Metric	Carded
HAN12018	18 Leaf Standard	Carded



HANSON BY IRWIN HIGH CARBON STEEL FRACTIONAL TAPS - OPEN STOCK

Description	# of Flutes	Plug Carded Stock #	Taper Bulk Stock #	Plug Bulk Stock #	Bottom Bulk Stock #
1/4"-20NC	4	HAN8120	HAN1320	HAN1420	
1/4"-24NS	4		HAN1321	HAN1421	
1/4"-28NF	4	HAN8123			
5/16"-18NC	4	HAN8127		HAN1427	
5/16"-24NF	4	HAN8129			
3/8"-16NC	4	HAN8134		HAN1434	HAN1534
3/8"-24NF	4	HAN8136			
7/16"-14NC	4	HAN8139			
7/16"-20NF	4	HAN8140			
1/2"-13NC	4	HAN8144			HAN1544
1/2"-20NF	4	HAN8145			
9/16"-18NF	4			HAN1449	
5/8"-11NC	4	HAN8152	HAN1352	HAN1452	HAN1552
5/8"-18NF	4	HAN8154		HAN1454	
3/4"-10NC	4	HAN8158		HAN1458	
3/4"-16NF	4			HAN1460	
7/8"-9NC	4			HAN1461	
7/8"-14NF	4			HAN1463	
1"-8NC	4			HAN1465	

TAP AND DIE SETS

IRWIN®
HANSON®

HAN1842
High Carbon Steel Machine Screw Thread
Metric Bottom Tap 12mm -1.25

- Etched: Tap size and recommended drill bit size are etched on each tool for easy identification
- Ideal for auto repair and machinery where metric threads are specified
- Made of high carbon steel
- Tap size etched on tool for easy identification
- Lifetime warranty does not cover abuse



HAN12088
Adjustable Handle Tap/Reamer Wrench TR-88 Carded

- Solid construction for long life and ease of use
- Straight handle design provides greater leverage, especially when using larger diameter taps
- Ideal for hand tapping
- For taps No. 0 to 1/2" (3mm to 12mm)
- Lifetime warranty does not cover abuse

HAN311088
Adjustable Handle Tap/Reamer Wrench TR-88 Bulk

HAN12498
Adjustable Handle Tap/Reamer Wrench TR-98 Bulk

- For Taps No. 1/4" to 1" (6mm to 24mm)

IRWIN®
HANSON®

HAN21210
10" Extended Length Ratcheting Tap Wrench

- Sliding handle for tight places and/or extra leverage
- Three position switch for quick efficient ratcheting action
- Chrome plated for long life and rust resistance
- For taps sizes No. 0 - 1/4" (3mm to 6mm)
- Lifetime warranty does not cover abuse

HAN21212
12" Extended Length Ratcheting Tap Wrench

- For taps sizes 1/4-1/2 (6mm-12mm)

Spark Plug Taps

- Ideal for threading or re-threading spark plug holes
- Tap size etched on tool for easy identification
- Made of high carbon steel
- Lifetime warranty does not cover abuse



SPARK PLUG TAPS

Part #	Description	# of Flutes
HAN2449	14 mm - 1.25 Tap	4
HAN2459	18 mm - 1.50 Tap	4

HANSON BY IRWIN HIGH CARBON STEEL METRIC THREAD TAPS - OPEN STOCK

Description	# of Flutes	Plug Carded Stock #	Plug Bulk Stock #	Bottom Bulk Stock #
6mm - 1.00	4	HAN8327	HAN1727	
8mm - 1.25	4	HAN8334	HAN1734	
10mm - 1.00	4	HAN8338		
10mm - 1.25	4	HAN8339		
10mm - 1.50	4	HAN8340	HAN1740	
11mm - 1.50	4			
12mm - 1.25	4		HAN1742	
12mm - 1.50	4	HAN8343		
12mm - 1.75	4	HAN8344	HAN1744	
14mm - 1.25	4		HAN1749	
14mm - 1.50	4		HAN1750	
14mm - 2.00	4		HAN1752	
16mm - 1.50	4		HAN1755	
16mm - 2.00	4		HAN1756	
18mm - 1.50	4		HAN1759	
20mm - 2.50	4		HAN1764	HAN1864
22mm - 1.50	4		HAN1765	

TAP AND DIE SETS

IRWIN®
HANSON®



HANSON BY IRWIN HIGH CARBON STEEL HEXAGON DIES MACHINE SCREW AND FRACTIONAL - OPEN STOCK

Description	1" Across Flat Bulk Stock #	1-7/16" Across Flat Bulk Stock #	1-13/16" Across Flat Bulk Stock #
1/2"-20 NF	HAN6545		
9/16"-18 NF		HAN6849	
5/8"-11 NC		HAN6852	
5/8"-18 NF		HAN6854	
3/4"-10 NC		HAN6858	
3/4"-16 NF		HAN6860	
7/8"-14 NF			HAN8463
1"-14 NS			HAN8467

HANSON BY IRWIN HIGH CARBON STEEL HEXAGON TAPER PIPE DIES - OPEN STOCK

Description	1" Across Flat Carded Stock #	1-7/16" Across Flat Bulk Stock #
1/4" - 18 NPT	HAN9503	
1/2" - 14 NPT		HAN7005

HANSON BY IRWIN HIGH CARBON STEEL HEXAGON METRIC DIES - OPEN STOCK

Description	1" Across Flat Carded Stock #	1" Across Flat Bulk Stock #	1-7/16" Across Flat Bulk Stock #	1-13/16" Across Flat Bulk Stock #
12mm - 1.25	HAN9742	HAN6642		
12mm - 1.50		HAN6643		
14mm - 1.25			HAN6949	
14mm - 2.00			HAN6952	
16mm - 1.50			HAN6955	
16mm - 2.00			HAN6956	
18mm - 1.50			HAN6959	
22mm - 1.50				HAN8565

Lisle®

LIS70500 8-Piece Tap Socket Set for all MCTI Taps thru 1/2"

- For use in restricted areas
- Ideal for use in areas where a T-handle won't fit
- Set of 8 sockets fits all number and fractional M.C.T.I. standard taps thru 1/2"
- Also fits 1/8" NPT



WARNING: Cancer and Reproductive Harm - www.P65Warnings.ca.gov

Lisle®

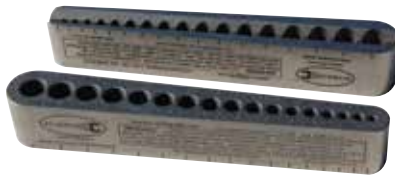
LIS70940 3-Piece Tap Socket Set

- Ideal for use where a T-handle won't fit, especially in restricted areas
- For larger, fractional M.C.T. standard taps
- Sockets contained in a vinyl holder
- #9 socket is 5/8" (16mm), #10 is for 11/16" (18mm) and #11 is for 3/4".



WARNING: Cancer and Reproductive Harm - www.P65Warnings.ca.gov

DRILL/TAP GUIDES



BGRMDG1000NP

V-Drill Guide, Metric sizes 3mm to 9.5mm

- Universal & portable V-Drill guide provides perpendicular alignment of drill bits on flat, round or square materials
- Heat-treated nickel alloy steel provides durability & accuracy
- Precision ground base provides perpendicular alignment of drill bit on flat surfaces
- V-Groove aligns drill bits on round and square cornered materials
- Includes 17 metric drill sizes: 3mm, 3.3mm, 3.5mm, 4mm, 4.2mm, 4.5mm, 5mm, 5.5mm, 6mm, 6.5mm, 6.8mm, 7mm, 7.5mm, 8mm, 8.5mm, 9mm, 9.5mm



BGRMTG500NP

V-Tap Guide, Metric sizes 1.6mm to 16mm

- Universal & portable V-Tap guide provides perpendicular alignment of ground thread taps on flat, round & square cornered materials
- Heat-treated nickel alloy steel provides durability & accuracy
- Precision ground base provides perpendicular alignment of tap on flat material
- V-Groove aligns tap on round and square cornered materials
- 9 guide holes cover 13 metric ground thread tap sizes: 1.6mm, 2mm, 2.5mm, 3mm, 3.5mm, 4mm, 5mm, 6mm, 8mm, 10mm, 12mm, 14mm, 16mm



BGRSTD500NP

V-Tap Guide, Standard sizes 0-80 to 5/8"

- Universal & portable V-Tap guide provides perpendicular alignment of taps on flat, round and square cornered materials
- Heat-treated nickel alloy steel provides durability and accuracy
- Precision ground base provides perpendicular alignment of tap on flat surfaces
- V-Groove aligns tap on round and square cornered materials
- 9 guide holes cover 32 standard ground thread tap sizes: 0-80, 1-64, 1-72, 2-56, 2-64, 3-48, 3-56, 4-36, 4-40, 4-48, 5-40, 5-44, 6-32, 6-36, 6-40, 8-32, 8-36, 8-40, 10-24, 10-32, 1/4-20, 1/4-28, 5/16-18, 5/16-24, 3/8-16, 3/8-24, 7/16-14, 7/16-20, 1/2-13, 1/2-20, 5/8-11, 5/8-18



BGRSTD1000DGNP

V-Drill Guide, Standard sizes 1/8" to 3/8"

- Universal & portable V-Drill guide provides perpendicular alignment of drill bits on flat, round or square cornered materials
- Heat-treated nickel alloy steel provides durability & accuracy
- Precision ground base provides perpendicular alignment of drill bits on flat materials
- Includes 17 standard drill sizes: 1/8", 9/64", 5/32", 11/64", 3/16", 13/64", 7/32", 15/64", 1/4", 17/64", 9/32", 19/64", 5/16", 21/64", 11/32", 23/64", 3/8"



BGRSTD2000DGNP

V-Drill Guide, Standard sizes 3/8" to 1/2"

- Universal & portable V-Drill guide provides perpendicular alignment of drill bits on flat, round and square cornered materials
- Includes 9 standard drill sizes: 3/8", 25/64", 13/32", 27/64", 7/16", 29/64", 15/32", 31/64", 1/2"
- Heat treated nickel alloy steel provides durability & accuracy
- Precision ground base provides perpendicular alignment of drill bit on flat materials
- V-Groove aligns drill bits on round and square cornered materials

TUBE AND PIPE CUTTERS/BENDERS



KT172310

Miniature Tubing Cutter

- Range 1/8" to 5/8" OD tubing
- Rollers for ease of operation
- Carded

WARNING: Cancer and Reproductive Harm - www.P65Warnings.ca.gov

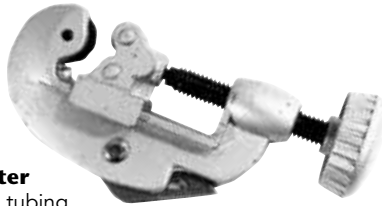


KT172330

Heavy Duty Tubing Cutter

- Range 1/8" to 1-1/8" OD tubing
- Heavy duty rollers for smooth operation

WARNING: Cancer and Reproductive Harm - www.P65Warnings.ca.gov



KT172355

Ratcheting Pipe and Hose Cutting Pliers

- Cut a variety of material
- Ratcheting action makes cutting smooth and easy
- Cuts material up to 1-1/2" diameter
- 1-touch, quick-release lever opens pliers instantly
- Built-in clasp securely locks handles when not in use for added safety • Lifetime warranty

WARNING: Cancer and Reproductive Harm - www.P65Warnings.ca.gov



KT172340

Heavy Duty Tubing Bender

- Bends 1/4", 5/16" and 3/8" aluminum, steel or copper

WARNING: Cancer and Reproductive Harm - www.P65Warnings.ca.gov



KT172320

Tubing Bender

- Aluminum head accommodates 3/16", 1/4", 5/16" and 3/8" tubing, with straight handle

WARNING: Cancer and Reproductive Harm - www.P65Warnings.ca.gov



KT172345

Heavy Duty Tubing Bender Pliers

- Bends 3/16", 1/4", 5/16" and 3/8" diameter copper and steel tubing without collapsing or kinking

WARNING: Cancer and Reproductive Harm - www.P65Warnings.ca.gov



BOLT AND CABLE CUTTERS



MAXILLA Folding Bolt Cutter

- Folding design, compact storage and easy to carry around
- Locking Levers-Ensure handles are locked into position whether opened or closed
- Drop-Forged Cr-Mo Steel Jaws provide the toughest, longest-lasting jaw strength

JSP93908 - 18" Folding Bolt Cutter

JSP93909 - 24" Folding Bolt Cutter

JSP93910 - 36" Folding Bolt Cutter



BOLT AND CABLE CUTTERS



Center Cut



Center Cut Bolt Cutters

- Heavy duty cutters
- Heat-treated chrome vanadium alloy jaws
- Specially designed curved handles for more efficient strength application and comfortable rubber handles for firm and safe grip • Lifetime warranty

WARNING: Cancer and Reproductive Harm - www.P65Warnings.ca.gov

Sold separately:

KT157124 - 24" Center Cut Bolt Cutter

KT157130 - 30" Center Cut Bolt Cutter

KT157136 - 36" Center Cut Bolt Cutter



Clipper Side Cut



Clipper Cut Bolt Cutters

- Blades are flush against one face for cutting against flat surfaces
- Heavy duty cutters
- Heat-treated chrome vanadium alloy jaws
- Specially designed curved handles for more efficient strength application and comfortable rubber handles for firm and safe grip • Lifetime warranty

WARNING: Cancer and Reproductive Harm - www.P65Warnings.ca.gov

Sold separately:

KT157318 - 18" Clipper Cut Bolt Cutter

KT157324 - 24" Clipper Cut Bolt Cutter

KT157330 - 30" Clipper Cut Bolt Cutter

KT157336 - 36" Clipper Cut Bolt Cutter



KNP7101-8C

8" Cobolt® Mini Bolt Cutter Carded

- Induction hardened edges cut hard, soft and piano wire
- Cuts material like bolts, nails, rivets, etc. up to 5.2 mm dia.
- Cutting edge hardness approximately 64 HRC
- Chrome Vanadium heavy-duty steel- forged, oil-hardened
- Improved cutting performance



Clipper Side Cut



Angled Head Clipper Cut Bolt Cutters

- Angled for easier insertion and keeping work in view
- Heavy duty cutters
- Heat-treated chrome vanadium alloy jaws
- Specially designed curved handles for more efficient strength application and comfortable rubber handles for firm and safe grip
- Lifetime warranty

WARNING: Cancer and Reproductive Harm - www.P65Warnings.ca.gov

Sold separately:

KT157414 - 14" Clipper Cut Bolt Cutter

KT157424 - 24" Clipper Cut Bolt Cutter

KT157436 - 36" Clipper Cut Bolt Cutter



WARNING: Cancer and Reproductive Harm - www.P65Warnings.ca.gov

KT157514

14" Wire & Rope Cutter

- Shear-cut blades hold and lock cable in cutting position for a clean, sharp cut
- Chrome-vanadium cutting head
- Designed for cutting wire rope, piano wire, steel wire, ACSR cable and aircraft cable • Lifetime warranty



TIN SNIPS



KT172380

8" Straight Cut Tin Snips

- 1-piece drop forged construction of high carbon steel
- Cushion handle with smooth, comfortable bows for ease in use and safety
- Designed for cutting straight and wide curves
- Cuts up to .61mm cold rolled steel or .41mm stainless steel
- Cutting blades open to approximately 4" wide
- Induction hardened cutting edges 54-58 HRC

WARNING: Cancer and Reproductive Harm - www.P65Warnings.ca.gov